

DWG NO. 130-0310111-01 REV. B

1

3

4

5

6

7

8

9

10

11

12

13

14

15

16

17

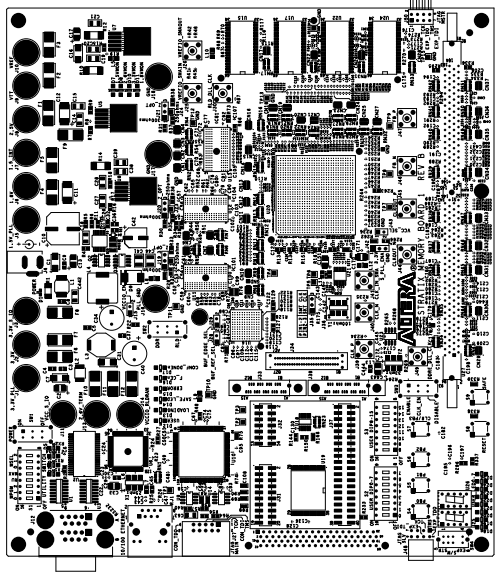
18

| REV. | DESCRIPTION | DATE | APPROVED |
|------|-------------|------|----------|
| | | | |

PROPRIETARY NOTICE: THIS DRAWING CONTAINS PROPRIETARY INFORMATION OF ANITEA CORPORATION. ANY REPRODUCTION OR DISSEMINATION OF THIS DRAWING WITHOUT THE WRITTEN PERMISSION OF ANITEA CORPORATION IS STRICTLY PROHIBITED. THIS DRAWING IS THE PROPERTY OF ANITEA CORPORATION AND IS NOT TO BE REPRODUCED OR TRANSMITTED IN ANY FORM OR BY ANY MEANS, ELECTRONIC OR MECHANICAL, INCLUDING PHOTOCOPYING, RECORDING, OR BY ANY INFORMATION STORAGE AND RETRIEVAL SYSTEM.

NOTES: UNLESS OTHERWISE SPECIFIED

1. ASSEMBLE BOARD PER IPC-A-610 (LATEST REVISION) STANDARD.
2. HANDLE MOISTURE SENSITIVE DEVICES (MSD) PER MANUFACTURER'S GUIDE. CLEAN OUT ON ALL MSD PACKAGES. COMPONENTS ARE TO BE CONSIDERED MSD LEVEL 6 AND USE EIA/JEP 13-A FOR HANDLING.
3. REWORK MUST BE APPROVED BY CUSTOMER BEFORE BEING ACCEPTIBLE. USE IPC-R-700 (LATEST REVISION) FOR ALL PCB REWORK APPROVED.
4. SQUARE PIN PAD DENOTE PIN 1 OF IC'S/CONNECTORS. POSITIVE END FOR CAPACITORS OR CATHODE END FOR DIODES.
5. INSTALL BAR CODE LABEL APPROX WHERE SHOWN, INCLUDING S/N.



TOP SIDE SHOWN

| | | | |
|--|--|------------------------------|--|
| MATERIAL | | DWG P. Ser/Iss Apr. 27, 2004 | |
| SPEC | | CNR | |
| DASH NEXT ASSY | | SOUR ENGR | |
| APPLICATION | | RELEASE | |
| PROJECTION | | TITLE | |
| UNLESS OTHERWISE SPECIFIED: DIMENSIONS ARE IN INCHES IN ACCORDANCE WITH ANSI Y14.5 DRILL TOLERANCES ARE PER Y14.5 ANGLES : 1 | | STRATIX MEMORY BOARD 1 | |
| TOLERANCES: DEC .X X 1 DEC .XX 1 DEC .XXX 1 FRACTIONS : 1 | | SCALE: 1:1 | |
| CONTRACT NO. XXXXXXXX | | SHEET 1 OF 1 | |
| SIZE/CAGE CODE DWG NO. D N/A 130-0310111-01 B | | REV | |

10-1111-01
B
130-0310111-01
REV. B