

PLAN VIEW
DECK LAYOUT

NOTE:
DECK MATERIAL: 3/8" CORZAN

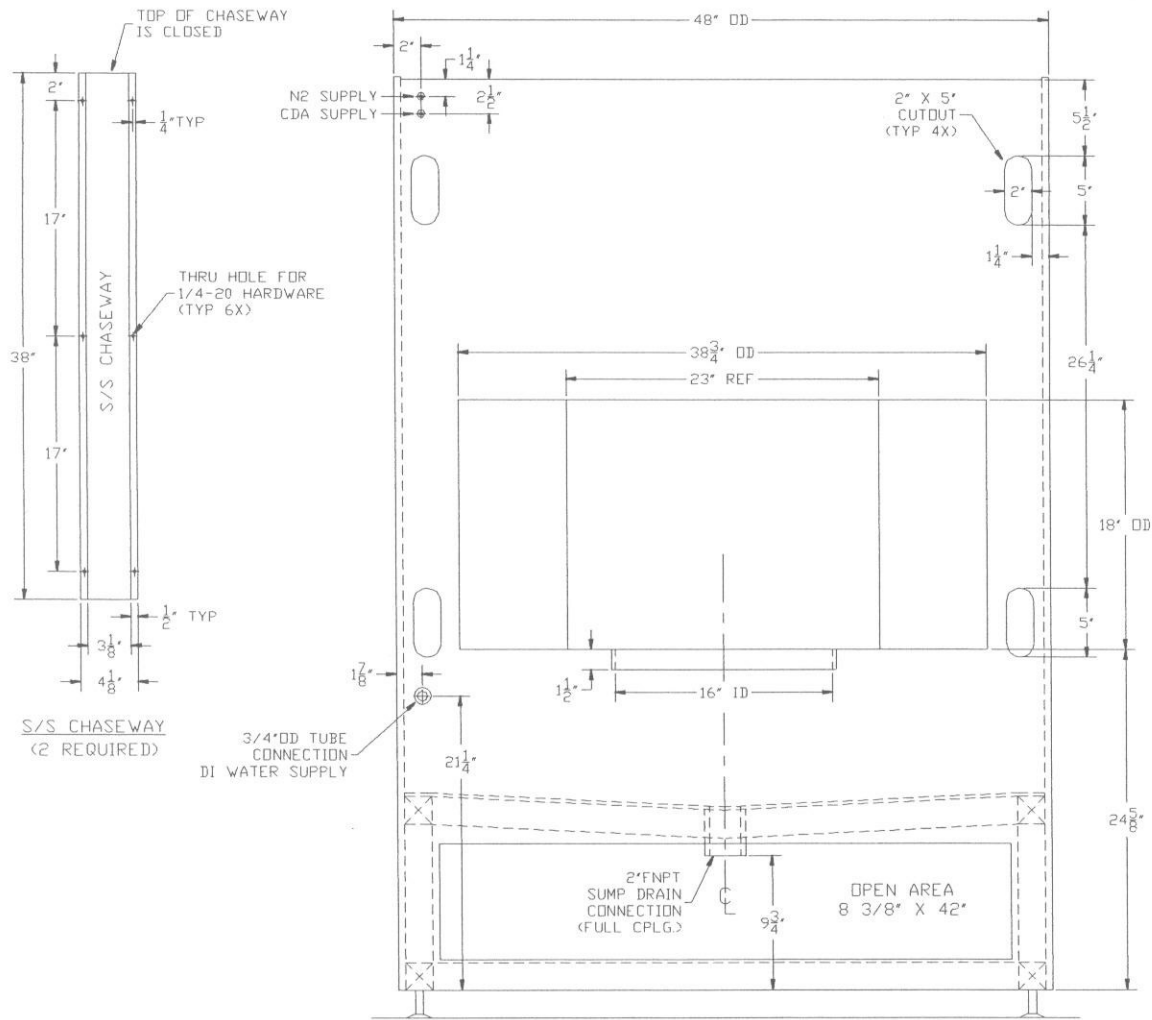
REYNOLDSTECH
6895 KINNE STREET, EAST SYRACUSE, NEW YORK 13057 USA
(315)437-0532 (PHONE) (315)437-1390 (FAX)

This document is the property of ReynoldsTech Fabricators INC. and is loaned only upon condition that it is not to be copied or reproduced, nor to be used for furnishing information to others for any purpose detrimental to the interest of ReynoldsTech Fabricators INC.

REV NO	DESCRIPTION	DR. BY	DATE
1	AS BUILT	GVA	6/29/99

REV	DWG. NO.	SHEET	SCALE	DATE	JOB NO.
1	L063DD01		NONE	5/11/99	L063

LUCENT TECHNOLOGIES
ACID/CAUSTIC PROCESS BENCH
TOP TOOL / DECK LAYOUT



REAR ELEVATION

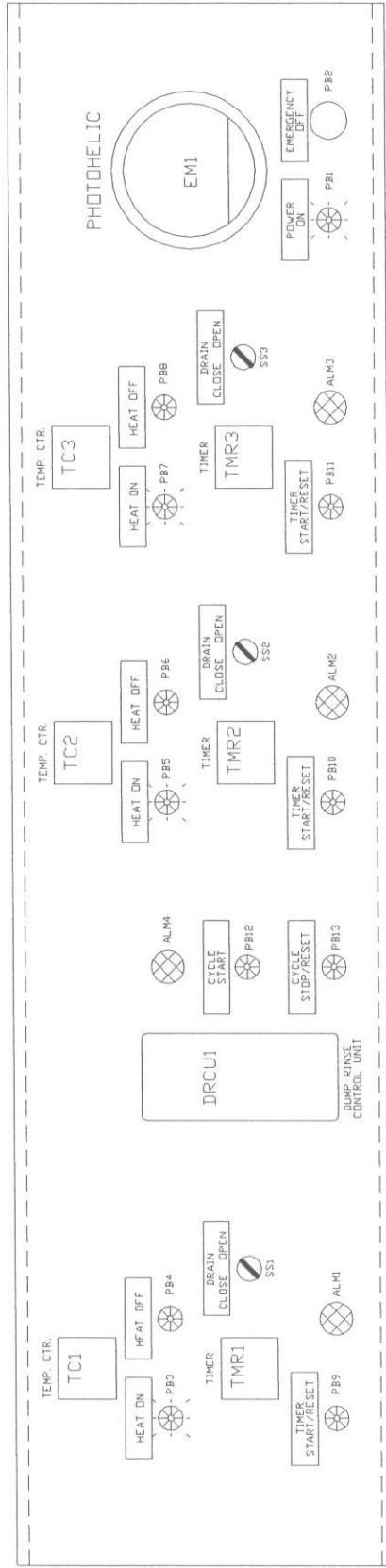
NOTES:

1. EXHAUST CONNECTION IS 6" ID X 16" ID (MATERIAL IS 1/4")
2. 2" X 5" CUTOUTS ARE TYPICALLY LOCATED ON BOTH SIDES OF TOOL

LUCENT TECHNOLOGIES
ACID/CAUSTIC PROCESS BENCH
FACILITY CONNECTION LOCATIONS

REYNOLDSTECH
6895 KINNE STREET, EAST SYRACUSE, NEW YORK 13057 USA
(315)437-0532 (PHONE) (315)437-1390 (FAX)

This document is the property of ReynoldTech Fabricators INC. and is loaned only upon condition that it is not to be copied or reproduced, nor to be used for furnishing information to others for any purpose detrimental to the interest of ReynoldTech Fabricators INC.



FRONT ELEVATION

NOTES:

1. MATERIAL OF CONSTRUCTION: 3/8" CORZAN

REYNOLDSTECH

6895 KINNE STREET, EAST SYRACUSE, NEW YORK 13057 USA
 (315)437-0532 (PHONE) (315)437-1390 (FAX)

This document is the property of ReynoldsTech Fabricators INC. and is loaned only upon condition that it is not to be copied or reproduced, nor to be used for furnishing information to others for any purpose detrimental to the interest of ReynoldsTech Fabricators INC.

LUCENT TECHNOLOGIES
 ACID/CAUSTIC PROCESS BENCH
 CONTROL PANEL LAYOUT

REV. NO.	DESCRIPTION	DR. BY	DATE	GVA	DR. BY	DATE	SCALE	NDNE	SHEET
1	AS BUILT								

REV	DWG. NO.	JOB NO.
1	L063CD01	L063

FACILITY CONNECTION TABLE

SERVICE DESCRIPTION:	SIZE:	CAPACITY:	MATERIAL:	PRESSURE RATING:	COMMENTS:
ELECTRICAL SUPPLY	208V/3Ph	50 Amp	N/A	N/A	N/A
EXHAUST	(1) 6" x 16"	1080 CFM	CORZAN	0.75"wg	PRESSURE DROP FOR HOOD 0.50"wg
NITROGEN SUPPLY	1/4"OD TUBE	2 SCFM	PE	80 PSI MIN.	N/A
CDA SUPPLY	1/4"OD TUBE	1 SCFM	PE	120 PSI	N/A
DI WATER SUPPLY	3/4"OD TUBE	8 GPM	FEP	50 PSI	N/A
WASTE DRAIN	2" FNPT	N/A	P/P	ATMOSPHERIC	N/A

REYNOLDSTECH

6895 KINNE STREET, EAST SYRACUSE, NEW YORK 13057 USA
 (315)437-0532 (PHONE) (315)437-1390 (FAX)

This document is the property of ReynoldsTech Fabricators INC. and is loaned only upon condition that it is not to be copied or reproduced, nor to be used for furnishing information to others for any purpose detrimental to the interest of ReynoldsTech Fabricators INC.

LUCENT TECHNOLOGIES
 ACID/CAUSTIC PROCESS BENCH
 FACILITY CONNECTION TABLE