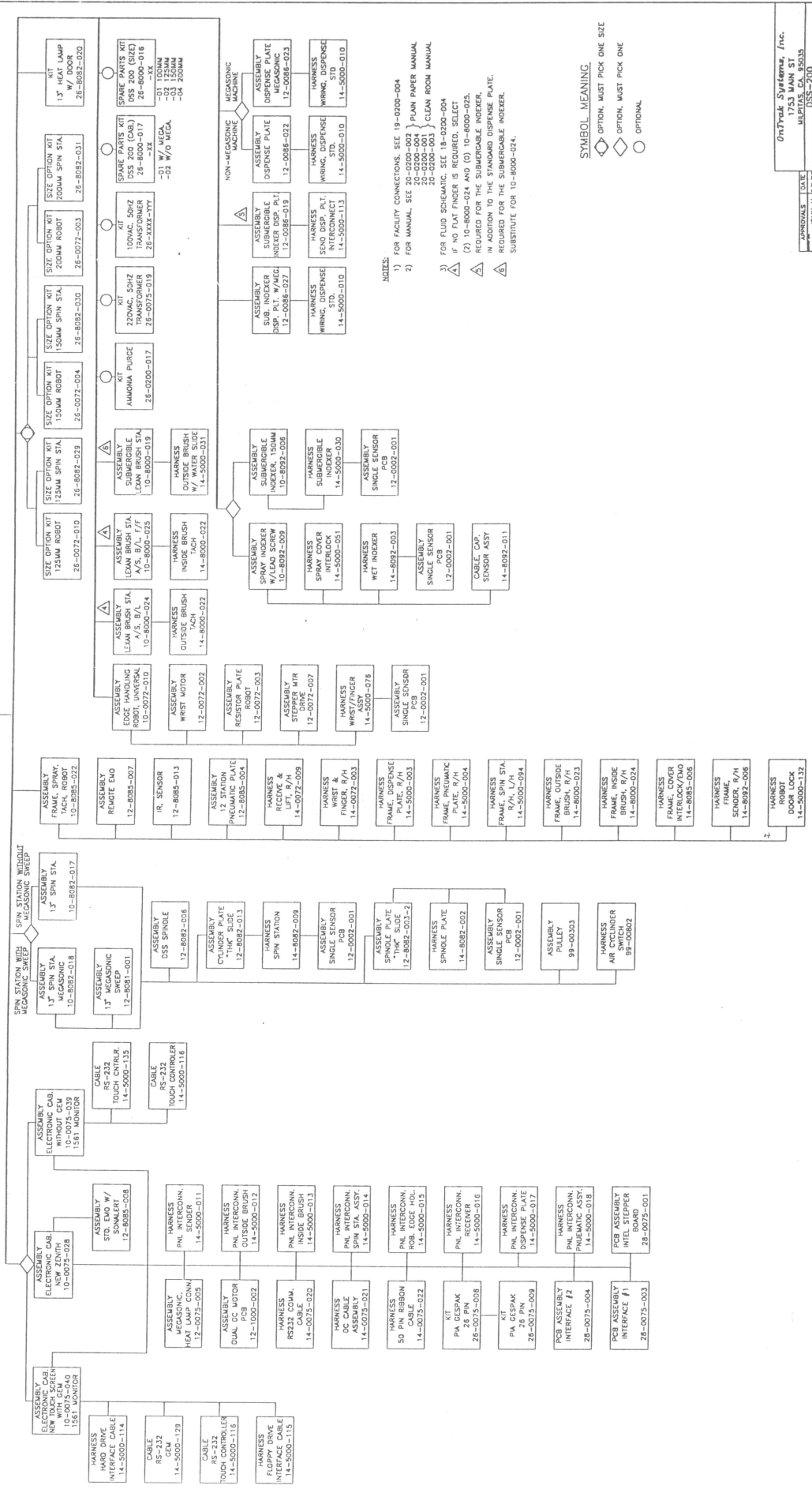


CON	REV	DESCRIPTION	DATE	APPROVED
1724	A	INITIAL RELEASE	10-28-83	-
1833	B	UPDATE	11/17/83	-
1833	C	COMPLETED NOTE #1	7/27/84	-
1833	D	ADDED TO THE DRAWING	7/27/84	-
1833	E	ADDED TO THE DRAWING	7/27/84	-
1833	F	ADDED TO THE DRAWING	7/27/84	-
1833	G	ADDED TO THE DRAWING	7/27/84	-
1833	H	ADDED TO THE DRAWING	7/27/84	-
1833	I	ADDED TO THE DRAWING	7/27/84	-
1833	J	ADDED TO THE DRAWING	7/27/84	-
1833	K	ADDED TO THE DRAWING	7/27/84	-
1833	L	ADDED TO THE DRAWING	7/27/84	-
1833	M	ADDED TO THE DRAWING	7/27/84	-
1833	N	ADDED TO THE DRAWING	7/27/84	-
1833	O	ADDED TO THE DRAWING	7/27/84	-
1833	P	ADDED TO THE DRAWING	7/27/84	-
1833	Q	ADDED TO THE DRAWING	7/27/84	-
1833	R	ADDED TO THE DRAWING	7/27/84	-
1833	S	ADDED TO THE DRAWING	7/27/84	-
1833	T	ADDED TO THE DRAWING	7/27/84	-
1833	U	ADDED TO THE DRAWING	7/27/84	-
1833	V	ADDED TO THE DRAWING	7/27/84	-
1833	W	ADDED TO THE DRAWING	7/27/84	-
1833	X	ADDED TO THE DRAWING	7/27/84	-
1833	Y	ADDED TO THE DRAWING	7/27/84	-
1833	Z	ADDED TO THE DRAWING	7/27/84	-



- NOTES:
- 1) FOR FACILITY CONNECTIONS, SEE 19-0200-004
  - 2) FOR MANUAL, SEE 20-0200-002 } PLAN PAPER MANUAL
  - 3) FOR FLUID SCHEMATIC, SEE 18-0200-004
- △ IF NO FLAT FINGER IS REQUIRED, SELECT 20-0200-001 } CLEAN ROOM MANUAL  
 △ REQUIRED FOR THE SUBMERGIBLE INDEKER, REQUIRED FOR THE SHARABLE DISPENSE PLATE.  
 △ SUBSTITUTE FOR 10-8000-024.

SYMBOL MEANING:

◇ OPTION, MUST PICK ONE SIZE

◇ OPTION, MUST PICK ONE

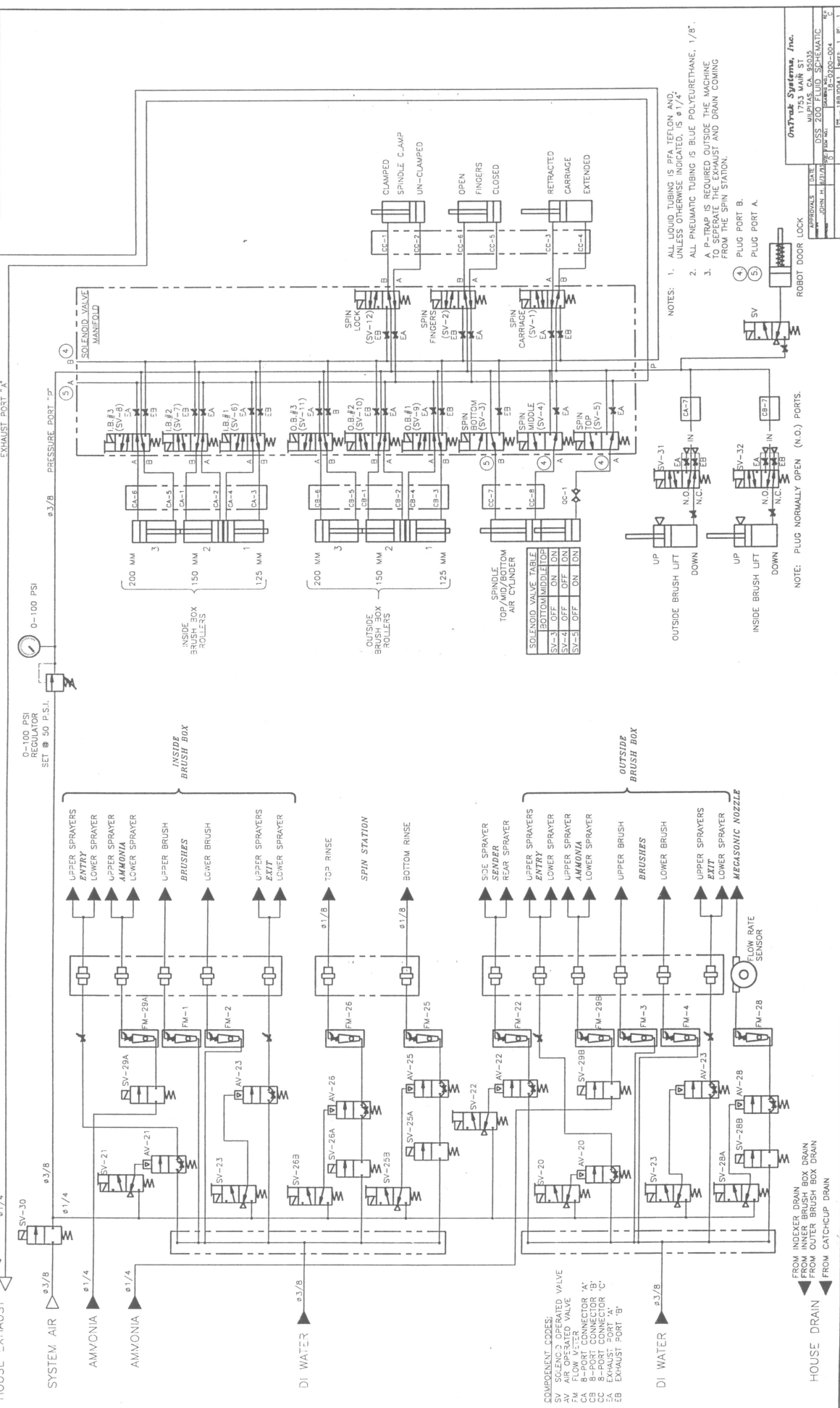
○ OPTIONAL

APPROVALS	DATE	DESIGNED BY	DATE	APPROVED

047Tech Systems, Inc.  
 1743 MAIN ST.  
 MILPITAS, CA 95035  
 DSS-200  
 48-0200-004  
 15-0000-138 WKS 14-5000-179 4/27/84 UBT

REV	DESCRIPTION	DATE	APPROVED
1724	INITIAL RELEASE	3/7/89	
1725	ROBOT DOOR LOCK	3/7/89	
1727	EXHAUST AIRBORNE DISPOSAL UNIT	1/8/94	

HOUSE EXHAUST  $\frac{1}{4}$   $\frac{1}{4}$  SV-30  $\frac{3}{8}$   $\frac{1}{4}$   $\frac{1}{4}$   $\frac{1}{4}$  DI WATER  $\frac{3}{8}$



0-100 PSI REGULATOR SET @ 50 P.S.I.

INSIDE BRUSH BOX

- UPPER SPRAYERS ENTRY
- LOWER SPRAYER AMMONIA
- UPPER SPRAYER AMMONIA
- LOWER SPRAYER AMMONIA
- UPPER BRUSH BRUSHES
- LOWER BRUSH
- UPPER SPRAYERS EXIT
- LOWER SPRAYER

SPIN STATION

- TOP RINSE
- BOTTOM RINSE

OUTSIDE BRUSH BOX

- SIDE SPRAYER SENDER REAR SPRAYER
- UPPER SPRAYERS ENTRY
- LOWER SPRAYER AMMONIA
- UPPER BRUSH BRUSHES
- LOWER BRUSH
- UPPER SPRAYERS EXIT
- LOWER SPRAYER
- MEGASONIC NOZZLE

DI WATER  $\frac{3}{8}$

COMPONENT CODES:  
 SV SOLENOID OPERATED VALVE  
 AV AIR OPERATED VALVE  
 FM FLOW METER  
 CC 8-PORT CONNECTOR 'A'  
 CB 8-PORT CONNECTOR 'B'  
 CA EXHAUST PORT 'A'  
 EB EXHAUST PORT 'B'

- NOTES:
1. ALL LIQUID TUBING IS PFA TEFLON AND, UNLESS OTHERWISE INDICATED, IS  $\frac{1}{4}$ "
  2. ALL PNEUMATIC TUBING IS BLUE POLYURETHANE,  $\frac{1}{8}$ ".
  3. A P-TRAP IS REQUIRED OUTSIDE THE MACHINE TO SEPARATE THE EXHAUST AND DRAIN COMING FROM THE SPIN STATION.

ROBOT DOOR LOCK  
 (4) (5) PLUG PORT A

NOTE: PLUG NORMALLY OPEN (N.O.) PORTS.

HOUSE DRAIN  
 FROM INDEXER DRAINBOX DRAIN  
 FROM OUTER BRUSH BOX DRAIN  
 FROM CATCH-CUP DRAIN

OutTrack Systems, Inc.  
 1753 MAIN ST  
 MILPITAS, CA 95035  
 (415) 961-8800 FAX  
 JOHN H. HANCOCK  
 18-0000-004 REV. C  
 18-0000-004