

cat^{AP}

Clever Assembly Tool for Advanced Packaging

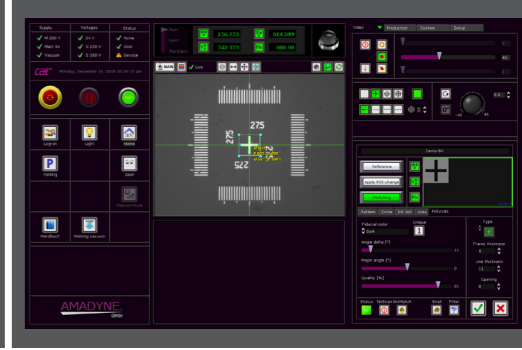
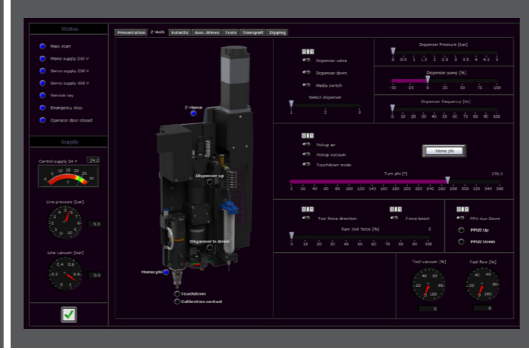
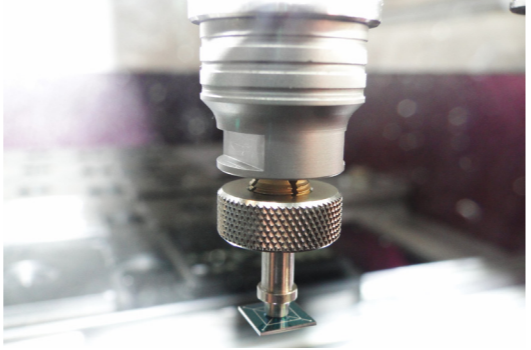
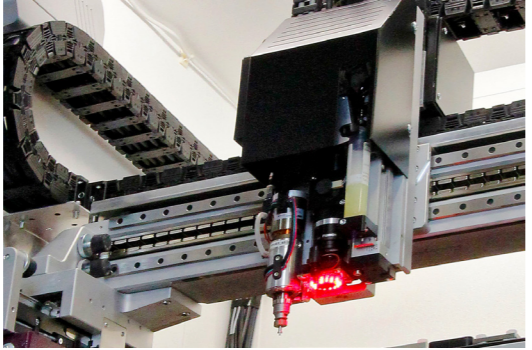


- Stand alone system designed for
 - short setup times
 - fast product changeovers
 - small-medium volume production batches
 - standard & advanced packaging processes
 - precision placement with linear xy motors
 - versatility with multiple options

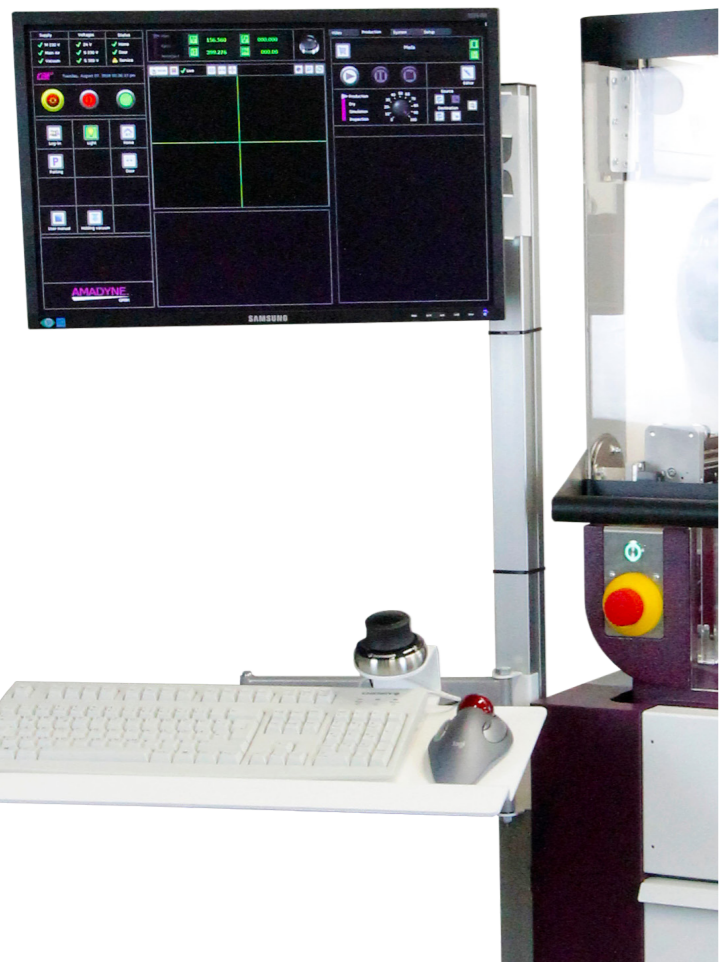
AMADYNE.

GMBH

www.amadyne.net



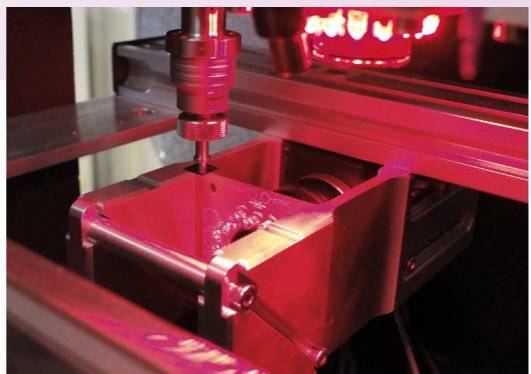
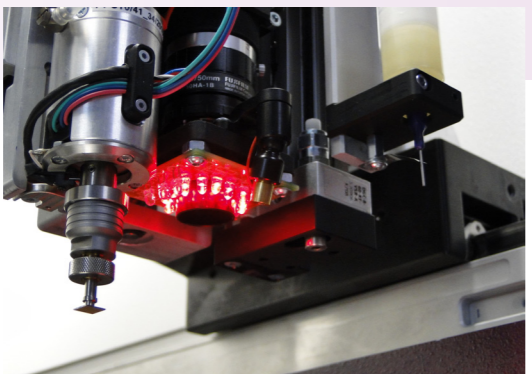
Cat^{AP}



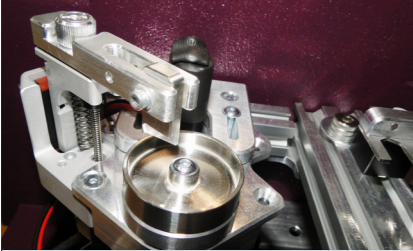
The CAT^{AP} is an automatic Micro Assembly System for picking and placing of components from various presentation formats, as well as for applying adhesives. Typical applications include: Manufacturing of prototypes, samples, small-medium production batches or process evaluations utilizing micro system technology. Utilizing AMADYNE's advanced software platform with its fully developed process capabilities, the system is quick to program and simple to operate.

Key features

- 300 x 400mm assembly area for the xy axis
- Basic system with ironless linear motors and versatile hardware configuration for advanced packaging
- Hardware options like Toolbox, Dispenser, Eutectic station, chip eject system, tape feeder and upward looking camera are available
- Flexible design for fast and easy integration of customer specific requirements
- Short product setup and product change times
- Robust "Linux" based software architecture
- Proven User Interface easy to program and operate



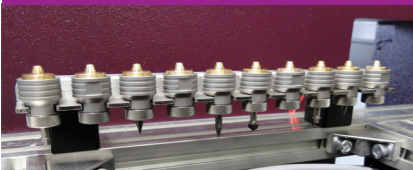
Stamping unit



Single squeegee with selectable speed and adjustable epoxy film thickness

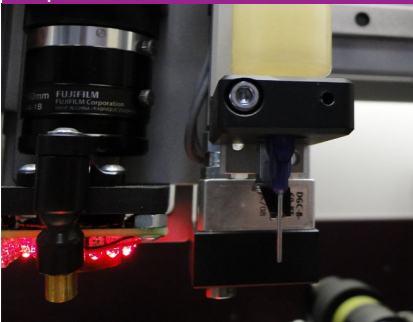
Cat^{AP}

Toolbox



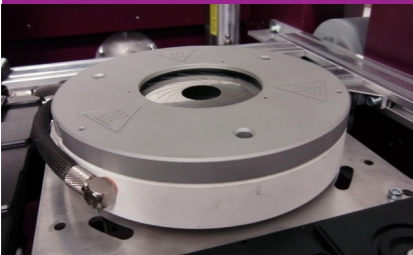
Toolbox for up to 10 tool holders

Dispenser



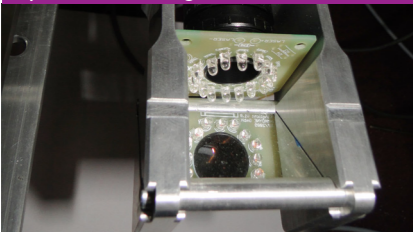
Free moveable writing time/pressure or rotary micro valve dispenser

Eutectic unit



Eutectic unit for soldering processes

Upward looking camera



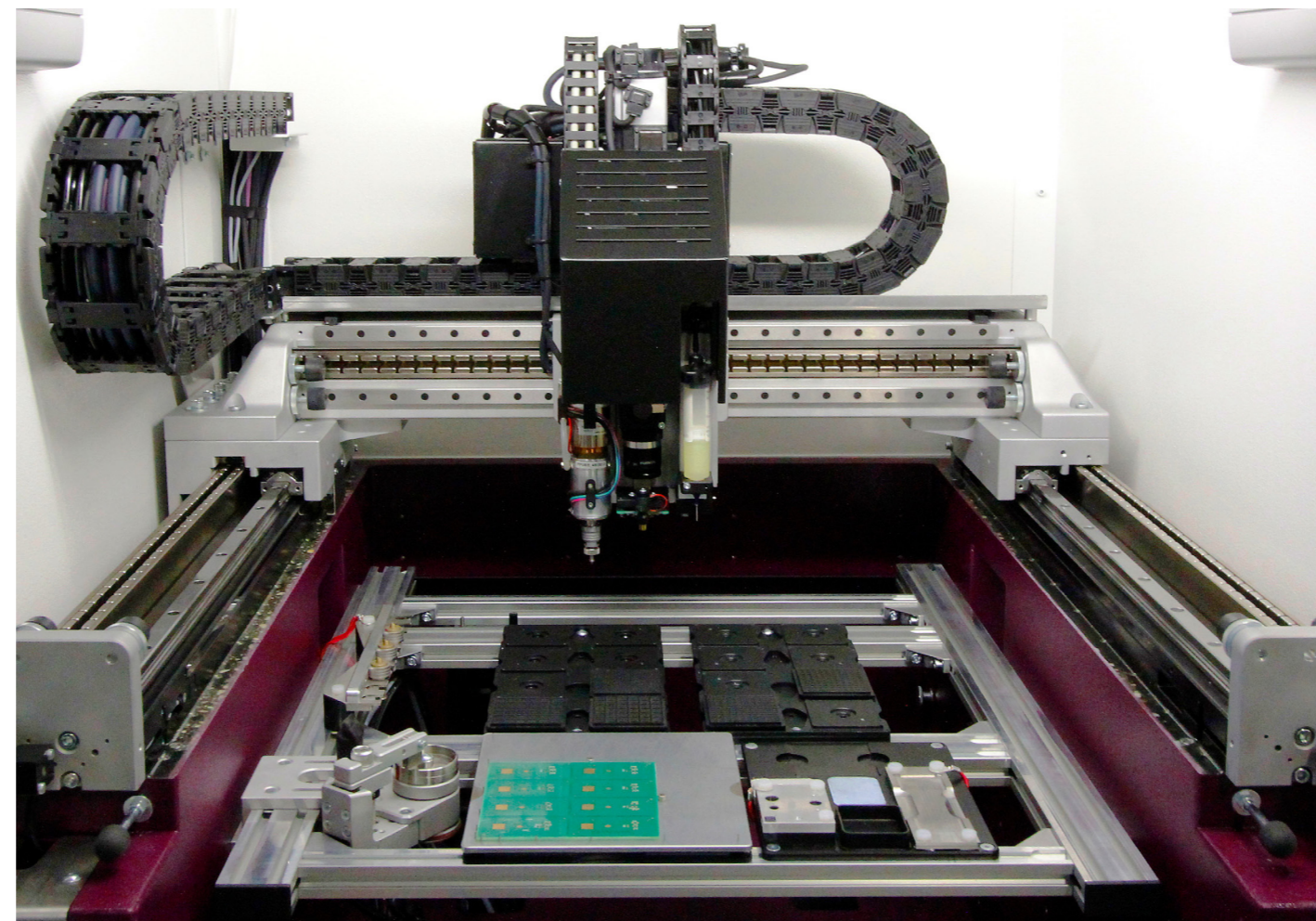
Upward looking camera with coaxial- and ring light

Hardware Basics

- Functional rugged compact mineral molded casting
- PC system with quad core processor
- Precision ironless linear motors for xy axes
- Full 360° tool rotation

Software Basics

- Open software architecture with SQL backend
- GUI, graphical user interface supported with expert panels
- Linux-4.x operating system
- Image recognition feature based with pattern matcher, circle, edge and ink dot matching
- Easy to operate and program



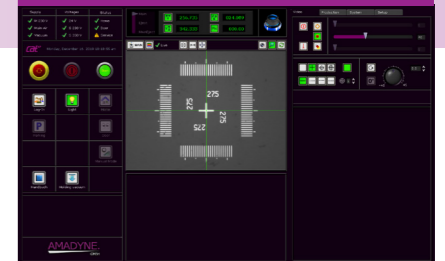
Options

- Toolbox
- Dispenser system
- Chip eject system
- Upward looking camera
- Eutectic unit
- Stamping unit
- Tape Feeder

Options

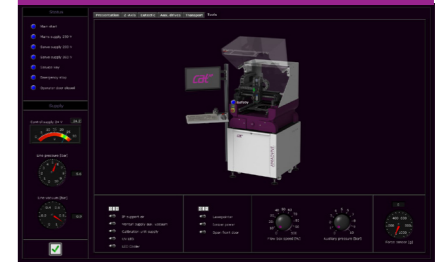
- Wafermapping
- Post-place Inspection
- Remote application support & maintenance system
- Manual pick&place mode
- Tracking of production data

Basic user interface



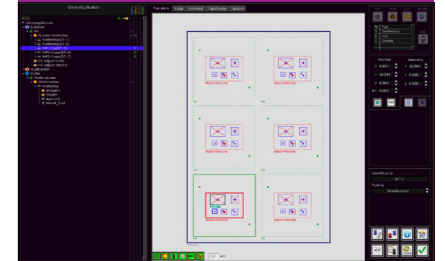
With live video, production window and status readouts

Service menu



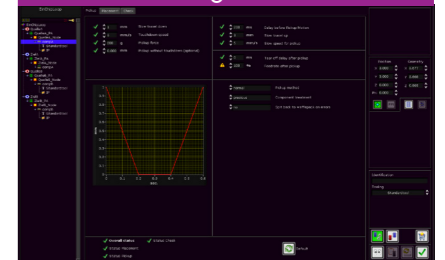
Operating of actuators, display of sensor states, system diagnosis

Program editor



Graphical display of presentation area and tree based program structure

Parameter setting



Separate tabs to set parameters for the different diebonding processes