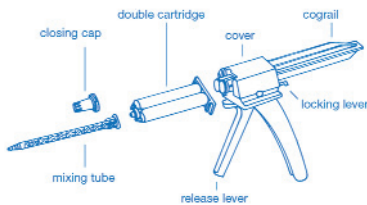
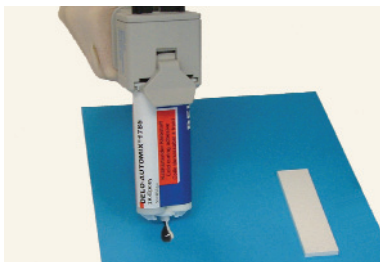


Illustrated instructions for the use of DELO-AUTOMIX



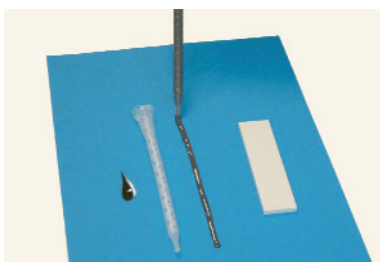
Insert the double chamber cartridge into the dispensing gun:
For this, push the locking lever of the dispensing gun up. Insert the cograil from ahead to the end stop (cogging down). Flip the cover of the dispensing gun up. Insert the cartridge. Attach the cover for cartridge arrangement.



Remove the closing cap from the double cartridge top by turning. Remove possibly cured adhesive from the outlet before initial use or when using double cartridges which have already been opened. Equalize filling level deviations of the individual components by operating the locking lever of the dispensing gun.



Attach the mixing tube and lock it by a quarter turn.



Furthermore, when using new double cartridges or a new mixing tube with a cartridge in use, abandon at least the first content of the mixing tube in order to avoid mixing errors.



Apply the homogeneously mixed adhesive to the component.