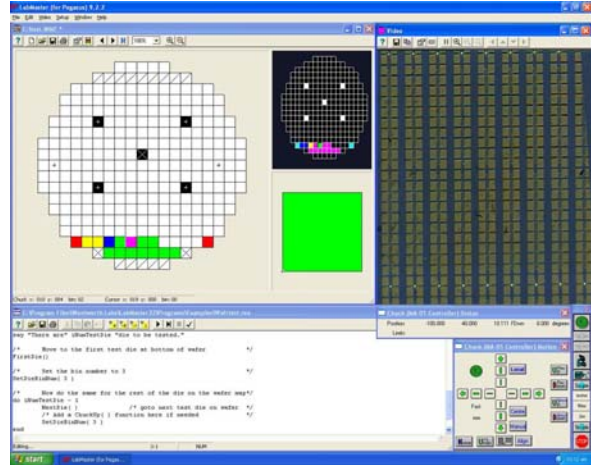


LabMaster™

Graphic User Interface

LabMaster software for the Pegasus Series delivers real-time, fully integrated monitoring and control via a simple-to-use graphical interface.



Real-time Monitoring and Control

LabMaster control software for the Pegasus Series of 200mm and 300mm probers features interactive graphics to centralize real-time monitoring and test setup of the prober and accessories.

LabMaster is designed with an intuitive graphic user interface to enable part time users to operate the prober with ease, as well as advanced utilities to permit the experienced user to design sophisticated test routines. These test routines may then be re-used for automated testing, a significant productivity advantage.

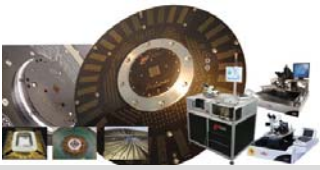
LabMaster also features the REXX scripting language – a stable, multi-platform tool allowing near infinite customization and control.

Smart Features for Improved Productivity

Comprehensive online help ensures users take maximum advantage of LabMaster's powerful live video feeds and embedded programming capability. LabMaster offers laser control integration, auto par centering, auto par focus and quiet mode. And, LabMaster provides sophisticated mapping to view premium quality images and to define wafer maps for device navigation and positioning.

Integration with the Sort Floor

LabMaster control software for the Pegasus Series seamlessly integrates with leading testers using standard communication protocols, while simultaneously communicating with all prober accessories.



Wentworth Laboratories offers vertical probe card solutions for both memory and logic applications, advanced cantilever probe cards, complete custom probe card design, and a full complement of probers for applications up to 300mm. For more about Wentworth's full turnkey solutions, please visit us on the web at <http://www.wentworthlabs.com>.

LabMaster™ Specifications

Setup and Installation

LabMaster is installed in the same manner as any other Windows program through your control panel "add software" icon. Using the LabMaster install program, easy-to-follow instructions walk you through the procedure.

Once installed, LabMaster is easily configured to your system using the Set-Up menu. By selecting any of the popular devices and the prober, each device is added to the tool bar for easy "left click" activation.

The figure to the right identifies each of the devices that may be selected for activation. A "right click" on any of these buttons will cause the properties dialog box to appear for easy access to speed, alignment and set-up procedures.

Accessories

- New Wave Laser System
- Temptronics Hot Chuck System
- TNP Microscope Turrets
- A-Zoom Microscopes
- Quicklift Control
- Magnification Settings

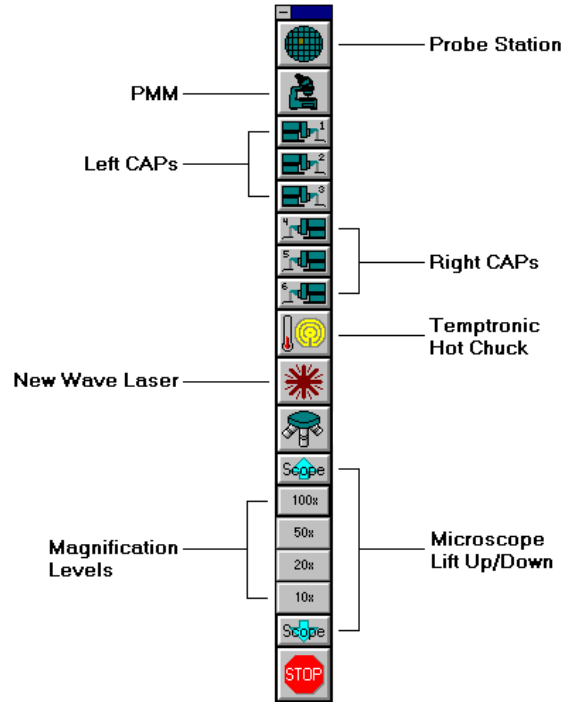
Communications with other Devices

Hardware: IEEE-488 (GPIB), RS 232, TTL
Software: DDE, OLE or REXX

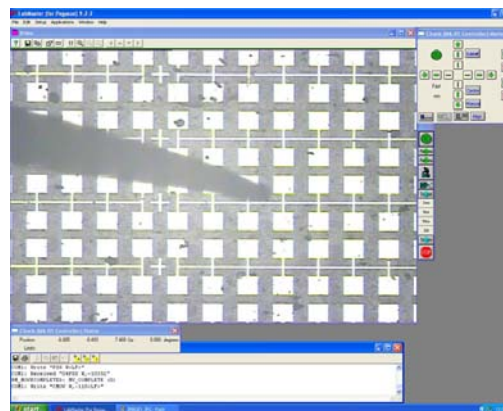
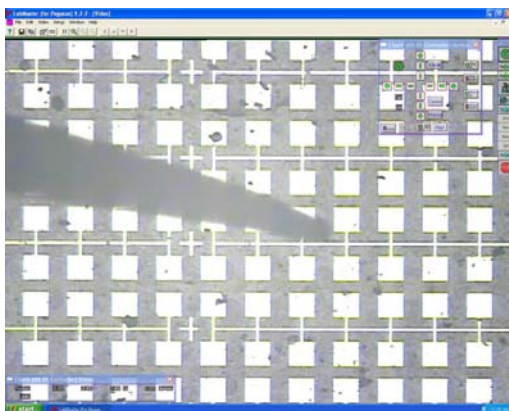
LabMaster Control Devices

Options are available to control the X,Y, and Z movement of the prober stage and all accessories. Please contact the factory for details.

©Wentworth Laboratories, Inc. All specifications are subject to change without notice. LabMaster is a registered trademark and ProbeAbility is a trademark of Wentworth Laboratories, Inc. Rev2.305.29.08.



LabMaster offers users a simple and intuitive display of device options



Live video showing LabMaster's 'click and move' facilities: users can click on an image and have the needle move to that location

Main Offices



Wentworth Laboratories, Inc.
500 Federal Road
Brookfield, CT 06804
USA

Tel: 203-775-9311
Fax: 203-775-6093

Wentworth Laboratories, Ltd.
1 Gosforth Close
Sandy, Bedfordshire
SG19 1RB
England

Tel: 44 (0) 1767 681 221
Fax: 44 (0) 1767 691 951

Wentworth Japan Co., Ltd.
1-33-4 Nakagawa Chuo,
Tsuzuki-ku
Yokohama, 224-0003
Japan

Tel: 81-45-912-8520
Fax: 81-45-912-8524