



JDRemote Release Notes

Version 2.2

Document#:

Welcome to release 2.2 of JDRemote. This document provides version numbers, a description of new features, and a list of unresolved issues associated with this release.

Software Version Number

| | |
|----------|-----|
| JDRemote | 2.2 |
|----------|-----|

Introduction

JDRemote is a dedicated Application Software for CellAdvisor applicable for managing and analyzing the measurement data or editing the built-in table and scenario.

Supported Model

JDRemote supports below models. Some of the functions are limited per each model. Please refer to Basic Operation section for more details.

- JD723A, JD725A, JD724B, JD723C, JD724C, JD725C, JD726C
- JD7105B, JD7108B
- JD745A, JD746A, JD748A, JD745B, JD746B, JD748B
- JD785A, JD786A, JD787A, JD785B, JD786B, JD787B
- DS9000 series

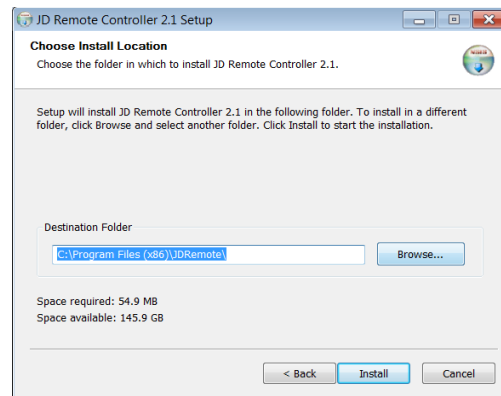
Compatible Operating System

- Microsoft Windows XP x86 SP2 or compatible
- Windows Vista SP1 or compatible
- Windows 7 x86 / x64
- Windows 8 x86 / x64
- Windows 10 x86 / x64

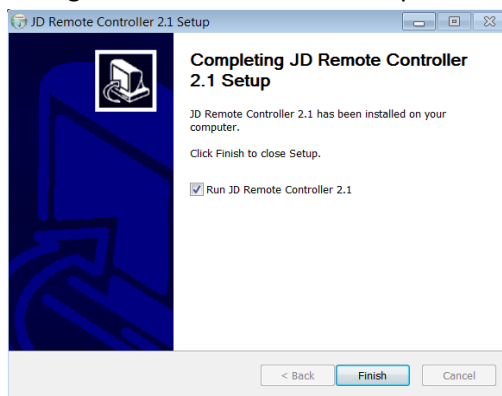
Installation Instructions

Application Software Installation

- Download the newest application software from the Viavi Solutions website, <http://www.viavisolutions.com/en/services-and-support/support/software-downloads-and-updates#Group-C>, and execute.



- Change installation location if required.

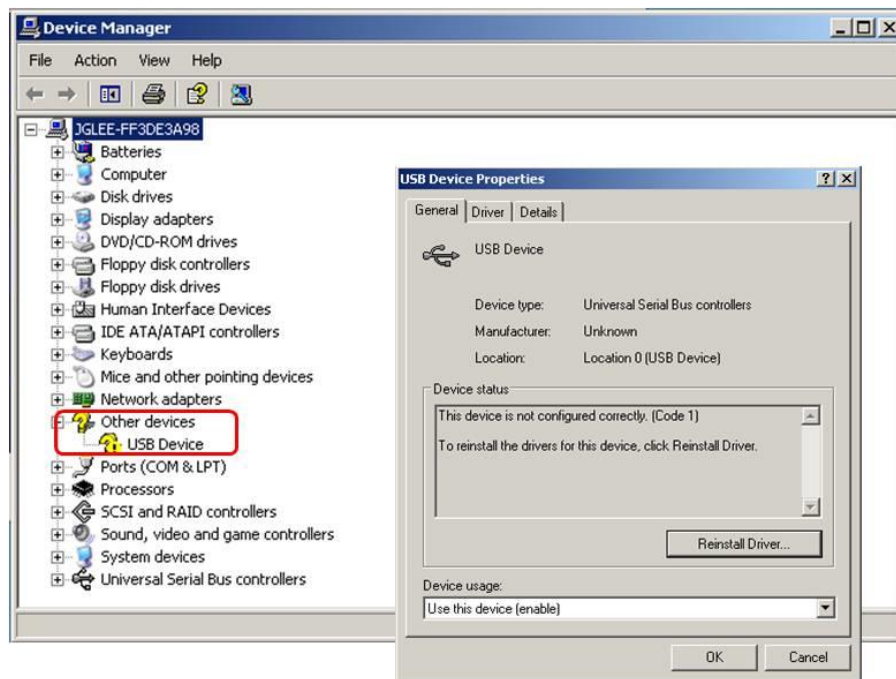


- You will be asked to update/install Microsoft .Net Framework or Microsoft Visual C++ 2008 Redistributable if your current version is out dated or missing.

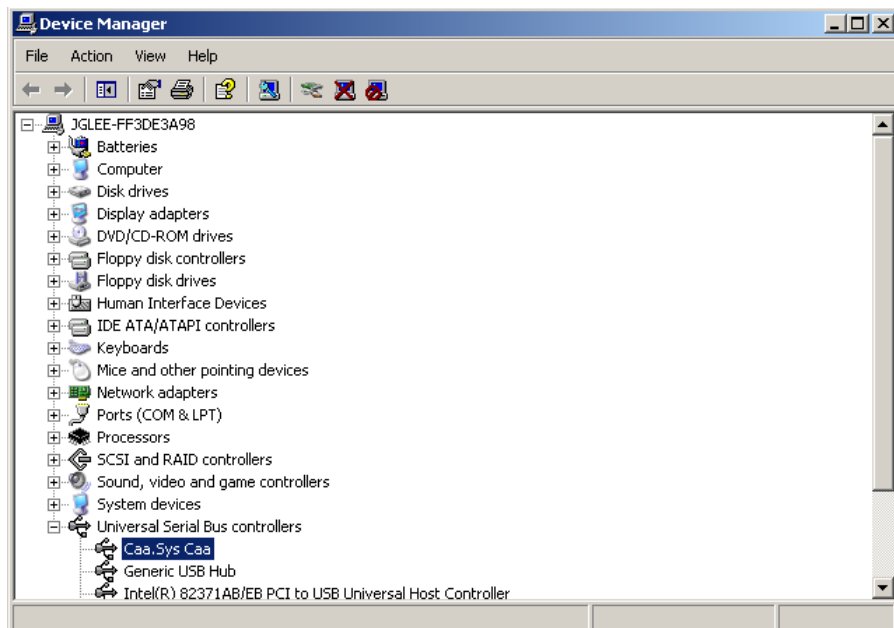
USB Driver Installation

To use USB connection for interfacing with CellAdvisor, proper USB driver matched with your OS should be installed.

- Select the JDRemote Setup file, and install the JDRemote program.
- After turn on the unit, connect the unit and computer using the USB client cable. Then, the computer starts to find the new hardware. If the computer cannot set up for the new hardware, you can check the connection in the **Control Panel-Device Manager** as a **USB Device**.
- Double click the **USB Device** and click the **Driver Update (Or install Driver)**.
- The Hardware Wizard process will be started. Then, you can find the driver files in the **Driver** folder in the **Program files – JDRemote directory**.
- When you set up the driver files, Windows XP's driver files were in the **XP folder**. And the Windows Vista and Windows 7's driver files were in the **Vista folder**. Please select the exact directory, when you select the directory to set up the driver.



- When the driver file set up, the “Other devices” would be change as “Caa.Sys.Caa” (in Windows XP.) or “GenCOMM(WDF)”(in Windows Vista or Windows 7)



Revision History

Version: 2.0

Date: October 20, 2015

New Features

- Supportability of JD780A product family: JD785A, JD786A, and JD788A
- Language options in Help: English and Korean
- Firmware upgrade for JD780A series
 - JDRemote now can load firmware file stored in the PC, and upgrade the JD780A via Ethernet or USB connection.
 - Once the JD780A received firmware from JDRemote, then it performs firmware upgrade and auto power recycling to complete the upgrade.

Improvement/Bug Fix

- Added header information on a printed form of Auto Measure Result
 - To change the header, select **Utility: User Info: {Company} / {User} / {Logo}**
- Improved to export parameters (Cell ID, Sector ID, and Group ID) from the LTE OTA Control logging data.

Known Issue/Bug

- While uploading firmware file to JD780A, progress bar stop updating if any mouse or key action is happened.
- Displaying incorrect unit in csv file exported from WCDMA OTA logging file was found. Unit of following parameters should be “dB” not “dBm”
 - CPICH, P-CCPCH, PHICH, P-SCH, and S-SCH

Version: 2.1

Date: January 4, 2018

New Features

- Supportability of toggle using screen mode menu
- USB driver auto installation

Improvement/Bug Fix

- Fix the bug regarding the scale: it works on 85% and 70%.

Known Issue/Bug

- Windows Defender prevents downloading install file on Windows 8.1 and 10. Please turn off Windows Defender when downloading.

Version: 2.2

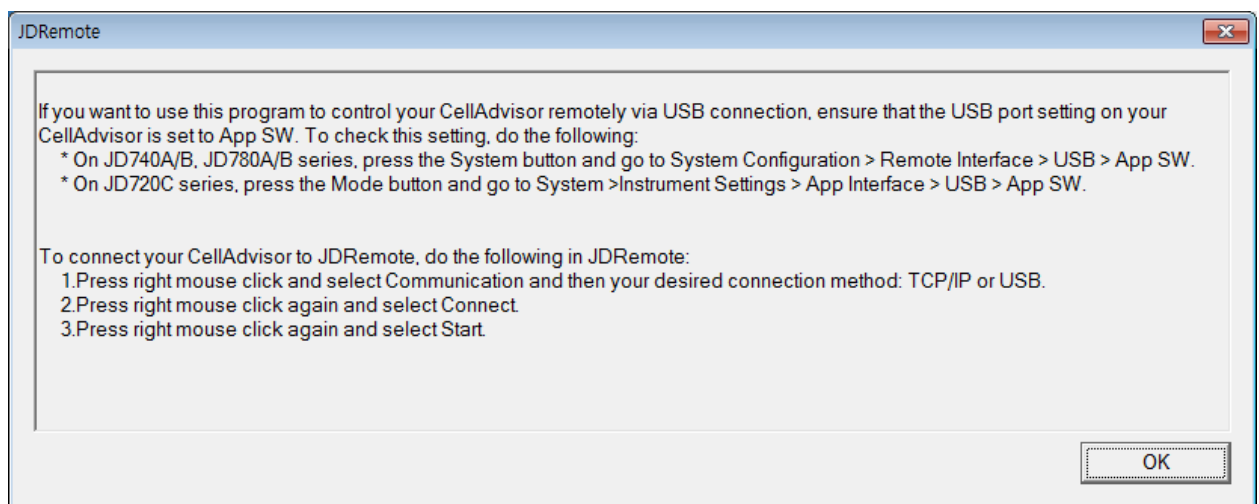
Date: March 23, 2018

New Features

- None

Improvement/Bug Fix

- Added a reminder window that appears when JDRemote opens.



Known Issue/Bug

- None