

Configure Sona or Marana with μ Manager



andor.oxinst.com

Covers Sona and Marana Models
4.2B-11, 4.2B-6, 2.0B-11, USB 3.0
and CoaXPress variants

Sona or Marana with Micro-Manager

Part 1

Install the latest Micro-Manager build

1

Install Micro-manager 2.0 beta nightly from here: https://micro-manager.org/wiki/Version_2.0#Downloads

Version 2.0

Micro-Manager 2.0 is a major step forwards compared to the 1.4 series that preceded it. The user interface (UI) has been overhauled, especially with respect to the image display window. The API has also been completely reworked, allowing for more powerful scripts and plugins. This was all enabled by a new internal data model for working with images and image metadata.

This page serves as a "hub" for various other pages related to Version 2.0.

Contents

- 1 Downloads
- 2 Contributing to MM2.0
- 3 API
- 4 API Events
- 5 Other Documentation

Downloads

Beta nightly builds: [Windows](#) | [Mac OS X](#)

2.0.0-beta2 (obsolete): [Windows 32-bit](#) | [Windows 64-bit](#) | [Mac OS X](#) (Note: there is no 2.0.0-beta1.)

Alpha nightly builds (obsolete): [Windows](#) | [Mac OS X](#)

Current source code on GitHub: [mm2 branch](#)

Contributing to MM2.0

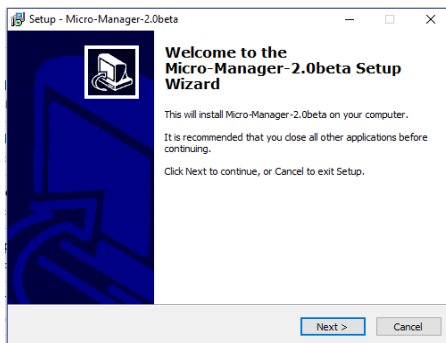
[How to debug and develop MM2.0](#)

Index of /~MM/nightlyBuilds/2.0.0-beta/Windows

Name	Last modified	Size	Description
Parent Directory		-	
MMSetup 64bit 2.0.0-beta3 20190228.exe	28-Feb-2019 23:01	70M	
MMSetup 32bit 2.0.0-beta3 20190228.exe	28-Feb-2019 23:01	68M	
MMSetup 64bit 2.0.0-beta3 20190227.exe	27-Feb-2019 23:02	70M	
MMSetup 32bit 2.0.0-beta3 20190227.exe	27-Feb-2019 23:02	68M	
MMSetup 64bit 2.0.0-beta3 20190226.exe	26-Feb-2019 23:00	70M	
MMSetup 32bit 2.0.0-beta3 20190226.exe	26-Feb-2019 23:00	68M	
MMSetup 64bit 2.0.0-beta3 20190225.exe	25-Feb-2019 23:00	70M	
MMSetup 32bit 2.0.0-beta3 20190225.exe	25-Feb-2019 23:00	68M	

2

Follow the setup wizard steps:



Notes

1. The latest build will be at the top of the list. Example here shows build for 28-Feb-2019
2. Admin rights are required to run the executable file
3. The Micro-Manager install file directory path is needed for Part 2

Sona or Marana with Micro-Manager

Part 2

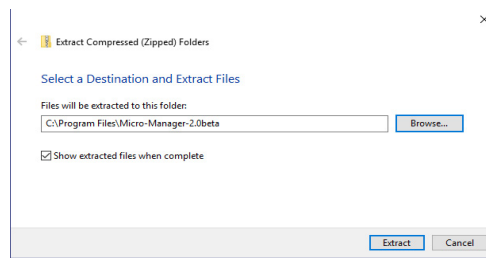
Install the Andor Driver Pack 3

1

Download the following exe file Andor Driver Pack - min version 3.15 (sCMOS) at andor.oxinst.com/downloads

2

Install the Andor Driver Pack 3 into to the Micro-Manager install directory (from Part 1)



3

Additional files will now be present in the Micro-Manager install directory, an example of some of these additional files is shown below:

 atcore.dll	05/03/2019 13:50
 atdevchamcam.dll	05/03/2019 13:50

Notes

1. The install directory should be set during the micro-manager install, in this example default was: C:/Program Files/Micro-Manager-2.0beta
2. The Andor Driver Pack will be updated regularly and the version number of the file may differ from that given above. The most recent release can be found at andor.oxinst.com/downloads/

Help and Support

Please see our range of technical documentation available at: andor.oxinst.com/downloads please create an account to request access to software files.

If you require further help please contact our customer support team at andor.oxinst.com/support

Further help on third party software compatibility can be found in our [third party software compability matrix](#).