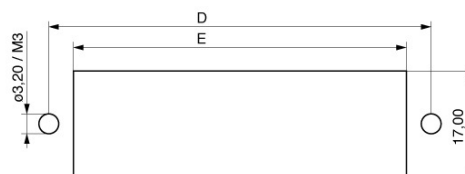
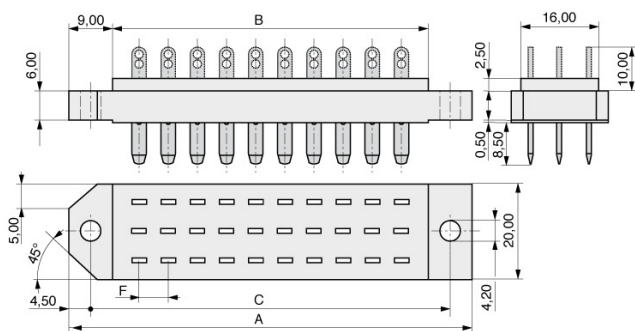


DIN 41618

Technical data

Pincount	39
Gender	Male
Material contact	Copper alloy
Plating contact	Ag
Material insulator	Thermoplast UL94V-0
Rated current IEC	10,0 A
Rated voltage	250 V RMS / V DC
Withstand voltage	875 V RMS for 1 Minute
Operating temperature	-55°C to +125°C
Max. processing temper.	230°C for 5 seconds
Board termination	Through hole
Orientation to PCB	Parallel, Vertical
No of rows	3
Leading contacts	---
Packaging	Standard
A	83,00
B	65,00
C	74,00
D	74,00
E	66,00

Pincount	A	B	C	D	E
039	83,00	65,00	74,00	74,00	66,00



Ordering number configuration

710-2-039-JAN-ES

711



MPE Garry GmbH
Schäfflerstraße 13
87629 Füssen/Germany

Telefon: +49 (0) 83 62 / 91 56-0
Fax: +49 (0) 83 62 / 91 56-500
E-Mail: vk@mpe-connector.de

Creation date: **24.04.2024**, Internet: <https://www.mpe-connector.de/en/products/din-41622-41618/plug-connector-din-41618/710-2#710-2-039-JAN-ES>