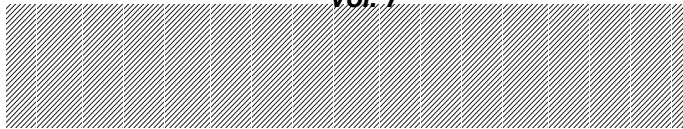
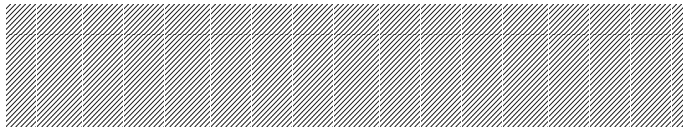


SCREEN CREATOR 5
User's Manual
Vol. 7



SCREEN CREATOR 5 TROUBLESHOOTING AND ERROR CODES



Contents

CHAPTER 1 ERRORS/WARNINGS IN OPERATING SCREEN CREATOR 1-1

1-1	Errors and Warnings in Operating Screen Creator	1-2
1-2	Errors during Screen Creator Operation	1-3
1-3	Warnings during Screen Creator Operation.....	1-14

CHAPTER 2 ERRORS/WARNINGS IN CREATING DATA..... 2-1

2-1	Errors/Warnings in Creating Data	2-2
2-2	Errors in Compilation	2-3
2-3	Errors in Creating Downloading Data.....	2-12
2-4	Warnings in Creating Downloading Data	2-16

CHAPTER 3 ERRORS AT OIP OPERATION 3-1

3-1	Error Display at OIP Operation	3-2
3-2	Errors at Main CPU Detecting Troubl	3-4
3-3	Errors during Serial Communication	3-5
3-4	Errors during Downloading/Uploading	3-6
3-5	Errors during Message Process.....	3-7
3-6	Errors during Operation Program Execution	3-8
3-7	Errors Caused with Too Many Messages Issued.....	3-22
3-8	OIP Errors.....	3-23
3-9	Errors in Peripheral Devices	3-27

How This Manual Is Organized

This manual, Chapter 1 through 4, includes structures of data to be displayed on the OIP and operations in detail for you to use the OIP.

Chapter 1 Fundamentals in Creating Screens

Outlines general ideas and organizations of data to be displayed on the OIP. You should read through this chapter before referencing the other chapters.

Chapter 2 Installation for Screen Creator 5

Covers the environment in operation and installation of Screen Creator 5.

Chapter 3 Basic Operations for Screen Creator 5

Describes each function name of Screen Creator 5 and operations for the keyboard and mouse.

Chapter 4 Menu Reference

Thoroughly discusses each menu of Screen Creator 5.

You are recommended to reference the following manuals for using Screen Creator 5.

Vol.1 Screen Creator 5 Manual Introduction

Introduces fundamental operations of Screen Creator 5.

Vol.2 Screen Creator 5 Manual Operations

Describes operations of Screen Creator 5 in details.

Vol. 3 Screen Creator 5 Manual PLC/External Equipment Connection

Covers the communications procedures with a host computer and connections to peripheral devices.

Vol. 4 Screen Creator 5 Manual Standard Component Catalog

You can get to know the standard components and their functions the Koyo Ltd. offers.

Vol. 5 Screen Creator 5 Manual Control Reference

Describes what are controls and how to use controls for creating components.

Vol. 6 Screen Creator 5 Manual K-Basic Programming

Offers information on how to write action programs for creating screens and how to use functions.

Vol. 7 Screen Creator 5 Manual Trouble Shooting and Error Codes

Covers restrictions on creating screens with Screen Creator 5, how to cope with trouble, and error codes.

Safety Precautions

Be sure to follow the safety precautions listed below in order to use the OIP safely. Koyo Ltd. cannot be held liable for any damages incurred if these safety precautions are not followed.



WARNING

- **Design your system so that there are sufficient countermeasures for personnel accidents and major equipment accidents. The system should have an external protection and safety circuit, so that even if the OIP should malfunction or even if there is a defect in the program the safety of the system is assured.**
- **Do not use the touch panel of the OIP to make switches that are related to safety or people or major damages (emergency safety switches, etc.). Be sure that the system is designed so that it can cope with any errors or malfunctions in the touch panel.**
- **Be sure that type 3 grounding is used for the protective-grounding terminal. There is a possibility of electrical shock if the unit is not grounded.**
- **If the OIP should malfunction, immediately turn off the poser and leave it alone.**
- **If there is direct output to external output device such as PLCs, direct output will be driven regardless of the ladder circuit interlock. Output may be used to drive motors and the like, so avoid using direct output because it is dangerous.**



CAUTION

- **Use and store the OIP in the environment described in the specifications (regarding vibration, shock, temperature, humidity, etc.).**
- **Do not use the OIP where it is subjected to inflammable or explosive gas, or steam.**
- **Before turning on the power, be sure that the power voltage rating of the OIP and the voltage rating power supply match. Using a mistaken power supply can damage the unit.**
- **Do not disassemble or modify the OIP. Doing so can cause malfunctions and lead to other problems.**
- **The OIP touch panel is made of glass. Striking it with hard objects or pressing hard on it may break the glass.**
- **Do not push down on the OIP touch panel with mechanical pencils, screwdrivers, or other sharp objects. Doing so can damage the touch panel or cause malfunctions**

Notations Used In This Manual

This manual uses the following symbol marks for you to use this system comfortably.



WARNING

Describes a peril that may cause operator's death or serious injury in neglecting the WARNING item(s).



Caution

Describes a peril that may cause bodily injury or serious device damage in neglecting the CAUTION items(s).



Describes general note(s) in use.

Note)

Explanations and supplements.

Glossaries used in this manual are as follows.

OIP

Stands for Operation Interface panel.

PLC

Stands for programmable controller. It is also called a sequence controller.

Link unit

A link unit is a communication equipment which connects this equipment and the PLC. The nomenclature of the communication equipment is different from each manufacture and the equipment is called a link unit in general.

Device

A device is such equipment that an input/output relay, internal relay, timer, counter, or resistor in the PLC.

Notice

We have used our best efforts in preparing this manual. We make no warranties with respect to the accuracy, or completeness of the contents of this manual and purpose. We shall not be liable any loss of profit or any other commercial damages, applying this manual directly and indirectly.

- 1) All rights reserved. No part of this book may be reproduced in any form or by any means, without permission in writing from Koyo Ltd.
- 2) Contents of this manual shall be subject to change without notice.
- 3) While every precaution has been taken in the preparation of this manual, if the reader notice any errors or has any advice on the contents of this manual, please contact our customer support in Sales Division of Koyo Ltd.
- 4) We shall have no liability to any loss or damage caused or alleged to be caused directly or indirectly by the statements contained in this manual or by the computer software and hardware products described in it.
- 5) Koyo Ltd. may have patents or pending patent applications, copyrights, or other intellectual property rights covering subject matter in this manual. The furnishing of this manual does not give you any license to these patents or other intellectual property rights. And we do not have any responsibility on troubles involved in the patents and other intellectual rights caused by the use of this manual.
- 6) Contact us at the following place concerning other unclear points in this manual.

Overseas Division
Koyo Electronics Industries Co.,Ltd.

Address: 1-171 Tenjin-cho, Kodaira, Tokyo 187 japan

Telephone: 81-42-341-7711

Facsimile: 81-42-342-6871

Version Up

Koyo Ltd. has upgraded Screen Creator 5 for adding new functions, operationability and so forth. Below will be introduced the updated functions.

1. Version 2.10

- Supporting middle size systems (GC53) of GC5x Series
- Adding the uploading editing function

To make this function effective, attach all screen data and K-Basic programs used in the project and download them to the panel. Then download the uploaded entities from the panel and restore them. Then you can edit the data and programs. Note that the data with the project attached increase their size.

- The following PLCs have been added.

Koyo	Koyo KOSTAC SA/SR α
Omron	SYSMAC α
Fuji Denki	FLEX-PC NJ-T/NS-T
Fuji Denki	Computer-link protocol
Fuji Denki	Loader command protocol
Toyota Koki	PC1
Toyota Koki	PC3
Matsushita Electric Industry	Panadac 7000

- Standard components, centered on the parts used for middle size systems (GC53) in the GC5x Series have drastically been added.

CHAPTER 1

ERRORS/WARNINGS IN OPERATING SCREEN CREATOR

1-1 Errors and Warnings in Operating Screen Creator

This chapter explains errors and warnings when you operate Screen Creator.

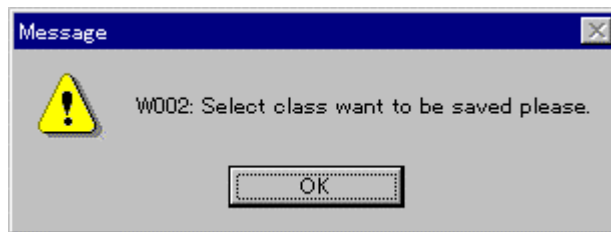
An "error" occurs in operating on Screen Creator in a wrong procedure or in detecting trouble to continue processing. The error, since indicating that you cannot continue processing anymore, must be eliminated or another way of operation is needed.

A "warning" message is issued to turn the operator's eyes on something wrong, such as the operation procedure of Screen Creator is invalid or unpredictable result may occur. Viewing the warning message, you should examine it closely and remove its cause, continue the processing intentionally as it is, change the operation, etc.

An error or warning message appears in a dialog box in operating Screen Creator. The following figures show an error and warning message examples.



Error message example



Warning message example

As shown in the above example, a number follows a letter "E" and they are called an error number. Likewise, a warning number begins with a letter "W", which is followed by a message stating why the warning is displayed.

The following part of this chapter describes error and warning messages, which may appear during operation of Screen Creator. We also discuss their possible causes and countermeasure of the errors and warnings.

1-2 Errors during Screen Creator Operation

E000: Memory space is insufficient.

<Cause> Memory space is not enough to operate Screen Creator or an error exists in Windows.

<Action> Terminate Screen Creator and restart Windows. If no error occurs after restarting Windows, then start Screen Creator.

E001: An error exists in the operating system (Windows).

<Cause> An error might exist in Windows or the Screen Creator file (*.EXE or *.DLL)

<Action> Terminate Screen Creator and restart Windows. If no error occurs after restarting Windows, then start Screen Creator. If Windows is healthy, re-install Screen Creator.

E002: The file cannot be open.

<Cause> The file for editing cannot be open since it is destroyed.

<Action> For investigating the cause, copy the file for editing to a file folder. Then delete the original file. When you have a backup file, copy it.

E003: The file cannot be read.

<Cause> The file cannot be read since (1) a wrong file or drive name is specified, or (2) another application has opened the file.

<Action> 1. Check that the file or drive name is correct.
2. Check that the file is not opened from another application.

E004: The file cannot be written.

<Cause> The file cannot be written since (1) a wrong file or drive name is specified or (2) another application has opened the file.

<Action> 1. Check that the file or drive name is correct.
2. Check that the file is not opened from another application.
3. Check that the objective floppy disk is inserted in the drive.
4. Check that the floppy disk medium is not write-protected.

E005: The file cannot be closed.

<Cause> The file cannot be written since (1) a wrong file or drive name is specified or (2) another application has opened the file.

<Action> 1. Check that the file or drive name is correct.
2. Check that the file is not opened from another application.
3. Check that the objective floppy disk is inserted in the drive.
4. Check that the floppy disk medium is not write-protected.

E006: Contents of the file are invalid.

<Cause> Contents of the specified file are invalid.

- <Action>
1. Check that the file or drive name is correct.
 2. Check that the file is not opened from another application.
 3. Check that the objective floppy disk is inserted in the drive.
 4. Check that the floppy disk medium is not write-protected.

E007: The folder cannot be created.

<Cause> The folder cannot be written since: (1) the folder name contains an invalid character that Windows cannot use, or (2) the drive capacity is too small.

- <Action>
1. Check the drive capacity.
 2. Check that the parent folder exists.
 3. Check that the folder Screen Creator 5 uses is not deleted. (Refer to Section 2-2, "File Configuration after Installation".)

E008: Saving the file failed.

<Cause> Saving the file failed since (1) memory space is insufficient, (2) the file or folder name is invalid, or (3) disk free space is insufficient.

<Action> When this message appears, the file may remain on the disk. In this case, delete it.

E009: Saving data in operation failed.

<Cause> Saving data in operation failed since (1) memory space is insufficient, or (2) the parent window distinguishes.

<Action> When this message appears, data (component and program) linked with the parent window may remain. In this case, delete it.

E010: The functions of the video driver are insufficient.

<Cause> The video driver embedded in Windows does not have enough functions to make drawing with Screen Creator. (Displaying may not be performed normally.)

<Action> It is necessary to change the video driver (hardware or software) installed in your computer.

E011: Copying a file failed.

<Cause> Copying a file failed since an invalid folder or file name is specified.

- <Action> Check that the file and folder names on the source and destination are correct.
1. The disk capacity is sufficient.
 2. The destination file is not write-protected.

E012: The tool bar layout is invalid.

<Cause> The position information of the tool bar recorded in the initial file (INI file) is invalid.

<Action> When this message appears, the tool bar position is returned to the default position.

E013: Internal data is invalid.

<Cause> An error exists in the Windows memory or control that Screen Creator uses.

<Action> Terminate Screen Creator and restart Windows. If no error occurs after restarting Windows, then start Screen Creator.

E014: Configuring a library failed.

<Cause> Configuring a library file failed during Screen Creator installation. You cannot continue the following operations.

<Action> Terminate Screen Creator and reinstall all.

E100: Reading the initial file (PA.INI) failed.

<Cause> The initial file (PA.INI) in the execution folder is invalid. You cannot read it.

<Action> Copy the PA.INI file to another folder for investigation and delete it. Then restart Screen Creator 5.

E101: Reading the entry file (ENTRY.INI) failed.

<Cause> The entry file (ENTRY.INI) in the System folder is invalid. You cannot read it.

<Action> Copy the ENTRY.INI file to another folder for investigation and delete it. Then reinstall Screen Creator 5.

E102: Reading the project file failed.

<Cause> The project file in the System folder is invalid. You cannot read it.

<Action> Copy the project file to another folder for investigation and delete it. Then select [Create] in the menu and create the file.

E103: The panel entry is not performed.

<Cause> The panel model is not selected when a project is created.

<Action> Select a panel model to be used in the project menu property.

E104: Initializing the icon failed.

<Cause> The icon file (ICON***.BMP) in the System folder is invalid.

<Action> Copy all icon files to another folder. Then, reinstall (copy) them from the master disk.

E105: Contents in the project file are invalid.

<Cause> The project file (*.PRO) in the System folder is invalid.

<Action> Copy the project file to another folder for investigation and delete it. Then select [Create] in the menu and create the file.

E106: Contents in the project file are invalid.

<Cause> The record file (*REG) in the project folder is invalid.

<Action> Copy the record file to another folder for investigation and delete it. Then select [Record] in the menu and record the file.

E107: Contents in the character string file are invalid.

<Cause> Contents in the character string file (*.STR) in the project folder are invalid.

<Action> Copy the character string file to another folder for investigation and delete it. Then select [Character string] in the menu to re-create it.

E108: Contents in the library file are invalid.

<Cause> The library file (*.PLB) in the Lib folder is invalid.

<Action> You cannot continue processing if the library file is destroyed. Recover the library file in the following procedure.

<Recovery Procedure>

1. When the *.PLB file exists in the Lib folder

Use Memo Pad to open the file to verify that the file can be accessed normally.

[Accessible]: Copy the file to another place and delete the *.PLB file. After the deletion, restore it.

[Inaccessible]: Change the file attribute for accessing the file again. When being able to access the file, copy the file to another place and delete the *.PLB file. If the file still is inaccessible, restart Windows and try the file access again. If it can be deleted, restore it. However, if it cannot be deleted, initialize it.

2. When the *.PLB file does not exist in the Lib folder, perform the restore operation.

[Restore]: Change a name of the PL_ file in the LIB folder to *.PLB. After the name change, start Screen Creator.

[Successful start]: You may use it as it is, but part of the library is possibly destroyed.

[Error occurrence]: Delete the renamed *.PLB file and initialize the library.

[Initialization]: You cannot recover the library. Re-install Screen Creator 5. When restarting Screen Creator 5, the library in the initial state is usable. Since added libraries are all lost, it is necessary for repairing operation.

[Repair]: There are two ways for repairing a library.

1. You can repair the library on Screen Creator. This method is safe in file integrity but it takes long time for repairing. Select [Add a file from outside] in the library menu, and select a file for adding it to the library in succession. In almost all cases, a file exists in the LIB folder and a file name is equal to a library name. Thus the operation is not difficult and you can repeat the file selection and addition.
2. You can access a file directly. This method is not safe in file integrity but it does not take long time for repairing. Open the *.PLB, using Memo Pad. Then add library entries in accordance with the PLB file format. If you enter a wrong class number, file name, etc., an error occurs again. In this case, you must the operation from scratch.

E109: Contents in the standard function library are invalid.

<Cause> The standard function library file (GENERAL.FNC) in the Lib folder is invalid.

<Action> Copy the standard function file to another folder for investigation and reinstall Screen Creator 5.

E110: Contents in the user function library are invalid.

<Cause> The user function library file (USER.FNC) in the Lib folder is invalid.

<Action> Copy the user function file to another folder for investigation and delete it for recreation of functions.

E111: Contents in the color-adjusting file for a bit map and screen are invalid.

<Cause> The color-adjusting file for a bit map and screen is destroyed.

<Action> Delete the color-adjusting file once and execute the [Bit map color adjusting] function again.

E200: The entered value is invalid.

<Cause> The entered value is invalid.

<Action> Reenter an appropriate value.

E201: The standard function cannot be saved.

<Cause> You cannot save the standard function afresh.

<Action> Re-name it as a user function for saving.

E202: The character strings cannot be saved (max. count exceeded).

<Cause> You cannot save the character strings since the number of character strings exceeds the limit for saving.

<Action> Reduce the number of character strings for saving.

E203: An error exists in component data of a component file.

<Cause> Contents of a component are invalid.

<Action> Delete the selected component. If the component has already been arranged, delete it from the screen.

E204: Saving the component data failed.

<Cause> Saving the component data cannot be performed.

<Action> This component cannot be arranged on the screen. Thus delete it before use.

E205: Saving the program failed.

<Cause> Saving the program cannot be performed.

<Action> Write the program again.

E206: Creation or saving cannot be performed (max count exceeded).

<Cause> Creation or saving cannot be performed since the number of input items exceeds the limit.

<Action> Reduce the number of input items for creation or saving.

E207: A compile error exists.

<Cause> A compile error exists since description on a screen or component program is invalid.

<Action> Correct the screen or component program error. You can reference details of the error, using the compile error in the reference bar.

E208: The clipboard cannot be used.

<Cause> The clipboard cannot be used since an error exists in Windows.

<Action> Terminate Screen Creator and restart Windows. If the same error occurs after the restart, reinstall Windows.

E209: Data in the clipboard is invalid.

<Cause> Data in the clipboard is invalid since an error exists in Windows.

<Action> Copy or paste data on the clipboard. If an error occurs again, restart Windows. If the same error still occurs after restarting Windows, re-install Windows.

E210: Undo cannot be executed.

<Cause> The Undo function cannot be executed since previous operation caused an error.

<Action> Try another operation and execute the Undo function. If the error occurs still, restart Screen Creator and Windows.

E211: Executing Undo failed.

<Cause> Executing the Undo function failed since previous operation caused an error.

<Action> Try another operation and execute the Undo function. If the error occurs still, restart Screen Creator and Windows.

E212: Redo cannot be executed.

<Cause> The Redo function cannot be executed since previous operation caused an error.

<Action> Try another operation and execute the Redo function. If the error occurs still, restart Screen Creator and Windows.

E213: Executing Redo failed.

<Cause> Executing the Redo function failed since previous operation caused an error.

<Action> Try another operation and execute the Redo function. If the error occurs still, restart Screen Creator and Windows.

E214: Create or Edit failed.

<Cause> Executing the Create or Edit function.

<Action> Terminate Screen Creator and restart Windows. If this error still occurs, delete and recreate it since an error exists in the editing file.

E215: The object larger than the area cannot be arranged.

<Cause> Since larger than the area, the component, texture, or bit map to be arranged.

<Action> Open the object from the [Open] command in the library menu, make the background small and reduce the area with the change property function for rearranging the object.

E216: Part of group components is not selected.

<Cause> Part of group components is not selected.

<Action> When you work with a component, select all parent and child components.

E217: The selected component is being edited.

<Cause> Component in editing cannot be cut or deleted.

<Action> When you want to cut or delete a component, deselect it or close the sub-window in editing. Then cut or delete it.

E218: Grouping cannot be made since the number of components exceeds the component arrangement limit.

<Cause> Grouping components increment arranged components. As a result, the number of arranged components exceeds the limit.

<Action> If the grouping is mandatory, delete another arranged component.

E219: No component is selected.

<Cause> Editing is performed before component selection.

<Action> Select a component before editing.

E220: Grouping cannot be made. (Selected components include a grouped one.).

<Cause> An already grouped component is about to be grouped.

<Action> Deselect a grouped component in selected ones.

E221: Grouping components failed.

<Cause> Grouping components failed.

<Action> Terminate Screen Creator and restart Windows. If the error still occurs after restarting Windows, then reinstall Windows.

E222: No grouped part is selected.

<Cause> The editing function you applied cannot be executed without a grouped component selected.

<Action> Select a grouped component before applying the editing function. When selecting a parent component, you can edit all components in the group.

E223: No character string is entered.

<Cause> A character string is about to be created on the screen before entering a character string in the attribute dialog box.

<Action> Enter a character string in the dialog box. If the attribute dialog box is not displayed, click on the [Current attribute] button on the drawing tool bar.

E224: The bit map file is invalid.

<Cause> The bit map file in the library is destroyed or the format in the file is invalid.

<Action> Load the file with Paint. If the file can be read with Paint, store it. If it cannot be read with this accessory, you cannot use it. Thus delete it.

E225: The bit map name has not been entered yet.

<Cause> A bit map is about to be created on the screen before entering a bit map name in the attribute dialog box.

<Action> Enter a bit map name in the dialog box. If the attribute dialog box is not displayed, click on the [Current attribute] button on the drawing tool bar.

E226: The texture file is invalid.

<Cause> The texture file in the library is destroyed or the format in the file is invalid.

<Action> Open the texture with the library menu. If the file can be open, store it. If it cannot be open, you cannot use it. Thus delete it.

E227: The texture name has not been entered yet.

<Cause> A texture is about to be created on the screen before entering a texture name in the attribute dialog box.

<Action> Enter a texture name in the dialog box. If the attribute dialog box is not displayed, click on the [Current attribute] button on the drawing tool bar.

E228: The switch control cannot be transformed since being overlapped with another one.

<Cause> The transformed switch control is overlapped with another one.

<Action> No switch controls can be overlapped with each other. Specify an area overlapping with another one.

E229: No component can be deleted in editing.

<Cause> Deletion is attempted to a component whose contents are being edited.

<Action> You cannot delete a component whose contents are being edited. Close the sub-window in editing for termination the editing. Then delete it.

E230: No editing can be performed during editing contents.

<Cause> A component is about to be transformed while its contents are being edited.

<Action> You cannot transform a component whose contents are being edited. Close the sub-window in editing for termination the editing. Then transform it.

E231: No parent window exists.

<Cause> The parent window for the window in editing is closed because of its error.

<Action> Since the parent window is closed, the window in editing is ineffective. Click on the [Close] button for canceling it.

E232: No data exists in the library.

<Cause> The specified object (texture or bit map) does not exist in the library.

<Action> The drawn object has been deleted in the library. Since the object on the screen is ineffective, delete it.

E233: The same name standard function exists already.

<Cause> The name of the created user function is the same as that of the already existing standard function.

<Action> Give another name for saving.

E234: A syntax error exists in the function.

<Cause> A syntax error exists in the created function.

<Action> Though being saved as it is, the function cannot be used in a program. Correct the error of the function, before saving it.

E235: The component file is invalid.

<Cause> The component file in the library is destroyed or the format in the file is invalid.

<Action> You cannot use the component. Delete it from the library.

E236: The screen file is invalid.

<Cause> The screen file is destroyed or the format in the file is invalid.

<Action> You cannot use the screen file. Delete it.

E237: Creating a documentation file failed.

<Cause> The documentation file cannot be created.

<Action> 1. Check the specified name of a file or folder.
2. Check the disk free space.
3. Check the memory capacity.

E238: The timer cannot be used.

<Cause> The timer function Windows offers cannot be used.

<Action> Other applications use all timers, or an error exists in Windows. Terminate the other applications or restart Windows.

E239: The execution file cannot be started.

<Cause> The execution file cannot be started since (1) memory space is insufficient, (2) the execution file (PA.EXE) is destroyed or does not exist, or (3) an error exists in Windows.

<Action> Restart Windows and start Screen Creator. If an error still occurs, reinstall Screen Creator.

E240: Storing to the library failed.

<Cause> Storing to the library cannot be performed since (1) memory space is insufficient or (2) an error exists in Windows.

<Action> Restart Windows and re-execute processing.

E241: The project is duplicated.

<Cause> No project can be duplicated.

<Action> Give another number for recording.

E242: Copying the project failed.

<Cause> Copying the project cannot be performed since the destination folder is invalid or the disk capacity is insufficient.

- <Action>
1. Check that the destination folder is correct.
 2. Check that the disk capacity is sufficient.

E243: Fixed components are overlapped.

<Cause> Overlapped components exist.

<Action> Change component positions or make them movable.

E244: Switch controls are overlapped.

<Cause> Overlapped switch controls exist.

<Action> Arrange the switch controls, which are not overlapped.

E245: The file cannot be referenced in the library.

<Cause> The library has the specified name but the corresponding file is not found. This statue may occur when a file is deleted ore re-named after saved in the library.

<Action> Delete the file from the library since it cannot be used.

E246: The primary screen has not been recorded.

<Cause> The first screen for recording a project does not exist. Screen number 1 is the very first screen at the time of panel activation and must exist.

<Action> The screen number 1 must be created in the project recording function.

E247: The device list file cannot be loaded.

<Cause> Downloading data must have been generated before perform the device editing.

<Action> Execute Create in the project [Download] function. Note that the number of items to be edited is up to 8000.

E248: Device editing failed.

<Cause> During execution of device editing, an error occurs.

<Action> Reference the device edit error.

E249: No project is uploaded.

<Cause> The upload-editing is attempted even though no uploading has been performed yet.

<Action> Upload data from the panel with the project [Upload] function.

E250: The project is not downloaded.

<Cause> The project file has not been transferred to the panel.

<Action> You must have transferred the project file at the time of downloading to make the upload editing effective.

E251: The uploaded project is destroyed.

<Cause> The uploaded project is destroyed

<Action> Check that the disk system is working correctly or its capacity is sufficient. Then execute the uploading again. If the same error exists still, you cannot perform the upload editing.

1-3 Warnings during Screen Creator Operation

W000: Editing has already started.

<Cause> You have selected a component for which editing has already started.

<Action> You being able to continue the editing since you can edit the selected component.

W001: The number of colors is invalid.

<Cause> The number of colors specified for a screen, component, or texture to be open does not agree with that of the current project.

<Action> When the data is open, its color setting is changed to that of the project. If you do not like the resultant color, correct it.

W002: Select a class for storing.

<Cause> The class belonging to the component is not selected when the component is saved to a library.

<Action> Select a class in the dialog for saving the component.

W003: Undo cannot be executed.

<Cause> The Undo function cannot be executed since a component being edited in the sub-window is affected with the function.

<Action> Close the sub-window for editing contents for re-execution.

W004: The drawn background was not saved.

<Cause> You can arrange only component on the project global screen. No background is saved even it drawn.

<Action> Arrange only a component on the global screen.

W005: Nothing is selected.

<Cause> Nothing is selected for an operation for which selection is needed.

<Action> The specified operation is ineffective. First selection is made for the operation.

W006: No group component can be edited.

<Cause> Grouped components cannot be edited alone.

<Action> Arrange them on the screen. Then edit them on the screen individually.

W007: The component has been made movable.

<Cause> A fixed component is arranged on the project global screen.

<Action> Any component needs to be movable on the global screen. A non-movable component is made movable.

W008: Select only one component.

<Cause> More than one component is selected for the operation.

<Action> Select only one component.

W009: The component is outside the area.

<Cause> Part of the arranged component is outside the area.

<Action> Any component outside the area is not saved. Enter it in the area before saving.

W010: The control is outside the area.

<Cause> Part of the created component is outside the area.

<Action> Any control outside the area is not saved. Enter it in the area before saving.

W011: No fixed components can be overlapped.

<Cause> Fixed components are overlapped and arranged.

<Action> Change the arranging position not to overlap each other.

W012: No switch controls can be overlapped.

<Cause> Switch controls are overlapped and arranged.

<Action> Change the arranging position not to overlap each other.

W013: The selected class cannot be deleted.

<Cause> The class (highest class) having lower classes cannot be deleted.

<Action> Delete the lower class first. Then delete the higher one.

W014: No library file for use exists.

<Cause> No list file for the library in use exists.

<Action> This file is created with the downloading function. When the downloading has finished, the file is automatically created.

W015: No child component can be outside the parent component area.

<Cause> Part of the arranged component is outside the area. The component stuck out of the area is not saved.

<Action> Rearrange the child component in its parent area.

W016: Device-editing cannot be started.

<Cause> You cannot perform device editing since the screen file is left open.

<Action> The device-editing function updates a screen file. Thus all screens must have been closed before the device editing. If screen update is necessary, perform [Create] in the downloading function.

W017: No global screen can be recorded.

<Cause> A global screen has been recorded.

<Action> Do not record a global screen.

W018: The component cannot be reduced since its control sticks out of the control area.

<Cause> When a numeric indicator, character indicator, or clock indicator control exists in a component, the component area cannot be smaller than the control size.

<Action> Adjust the control length for a numeric indicator, character indicator, or clock indicator before reducing the component size.

CHAPTER 2

ERRORS/WARNINGS IN CREATING DATA

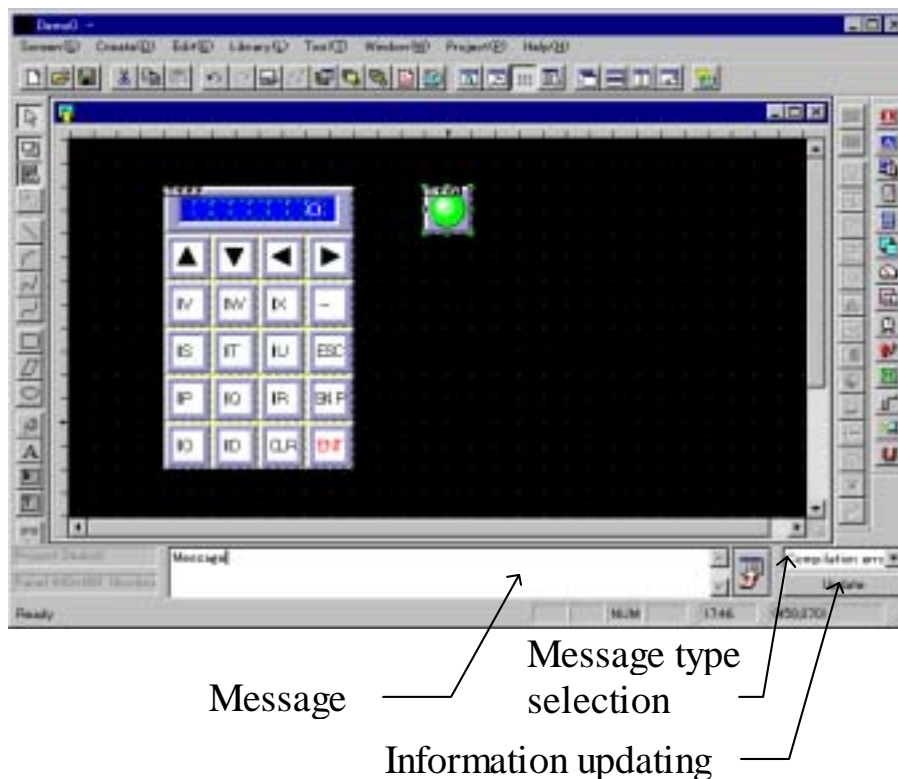
2-1 Errors/Warnings in Creating Data

This chapter describes error and warning messages appear during data creation.

The data creation is performed in the following two points. The one point is when an operation program written in K-Basic for a screen component is saved. When [Compile at saving a screen] is set, the program is compiled at the time of saving. (The compile means that program syntax is checked and translated into an object that the OIP can execute.) An error detected during compilation is explained in Section 2-2, Errors in Compilation.

The second point is when downloading data is generated after screen data of all projects and operation programs are processed. At this point, operation programs that have not been compiled are compiled and other remaining processes are performed. Thus all kinds of errors and warnings to be described in sections in this chapter may appear. The error and warning messages involves Section 2-3, Errors in Creating Downloading Data, Section 2-4, Warnings in Creating Downloading Data, as well as Section 2-2, Errors in Compilation.

The above errors and warnings appear on the dialog bar in Screen Creator 5.



When you want to check details of an error or warning, select the compile error in the Message type selection box and click on the [Update information to the latest] button.

An error or warning message includes the name of a screen or component where it occurs. If the error is detected in an operation program, its message also includes line number where it occurs. Notice that the error is detected in the line, but its cause does not always exist on the line.

2-2 Errors in Compilation

EC000: Memory space is insufficient.

<Cause> Memory space is not enough to compile a program or an error exists in Windows.

<Action> Terminate Screen Creator and restart Windows. If no error occurs after restarting Windows, then start Screen Creator.

EC001: An error exists.

<Cause> An error is detected, which does not belong to any errors described in this section.

<Action> Contact the technical support of this company.

EC002: The character string is too long.

<Cause> The character string is too long.

<Action> Make the character string in no longer than 80 bytes. One alphanumeric character is one byte. But one two-byte character consists of two bytes.

EC003: An error exists in character string constant.

<Cause> An error exists in character string constant.

<Action> Eliminate the error. A character string constant is enclosed with double quotes ("").

EC004: Memory space cannot be allocated.

<Cause> Memory space cannot be allocated.

<Action> Contact the technical support of this company.

EC005: Memory space cannot be allocated in the heap area. Contact the selling agency.

<Cause> Memory space cannot be allocated in the heap area.

<Action> Contact the technical support of this company.

EC006: An error exists in writing K-Basic.

<Cause> An error exists in writing K-Basic.

<Action> The description violates the K-Basic syntax. Check several lines around the line where the error is detected.

EC007: An error exists in writing K-Basic.

<Cause> An error exists in writing K-Basic.

<Action> The description violates the K-Basic syntax. Check several lines around the line where the error is detected.

EC008: The name is too long.

<Cause> The name is too long.

<Action> A variable or function name must be specified within 20 bytes.

EC009: An error exists in screen/component name.

<Cause> An error exists in screen/component name.

<Action> Specify a correct screen, component, or control name. The screen, component, and control are separated with a period (.).

EC010: The local variable is not declared.

<Cause> The local variable is not declared.

<Action> Before using a local variable, be sure to declare with LOCAL.

EC011: The variable has been declared as a global variable.

<Cause> The global variable is declared twice in the same program.

<Action> Declaration of a global variable must be only once in a program.

EC012: The variable has already been declared as a backup variable.

<Cause> The variable declared as a backup variable is about to be declared with another type.

<Action> Change the variable name.

EC013: The variable has already been declared as a static variable.

<Cause> The variable declared as a static variable is about to be declared with another type.

<Action> Change the variable name.

EC014: Plus-minus (\pm) conversion is not allowed.

<Cause> Sign conversion (\pm) is applied to an item other than a numeric constant or numeric variable.

<Action> Apply the sign conversion to only a numeric constant or numeric variable.

EC015: Operation with different types is not allowed.

<Cause> Operation with different types is not allowed.

<Action> Correct the operation with the same type (addition, subtraction, substitution, etc.).

EC016: Perform CONST declaration before use.

<Cause> Constant declaration is used before CONST declaration.

<Action> Perform CONST declaration.

EC017: This CONST declaration has already been performed.

<Cause> The same CONST declaration appears several times.

<Action> Perform declaration not to duplicate CONST declaration.

EC018: Zero divisor occurs.

<Cause> The divisor is zero

<Action> Delete the zero divisor.

EC019: The number of dimensions mismatched that of the declared ones.

<Cause> The number of variable dimensions in K-Basic is not equal to that of the declared ones.

<Action> Change the variable declaration.

EC020: An error exists in the array declaration.

<Cause> The number of dimensions is not a numeric for declaring an array variable.

<Action> Declare the number of dimensions for an array variable with a numeric value.

EC021: An error exists in setting the variable size for the character string type.

<Cause> The character string length is not numeric or the type specifier of the variable is not \$.

<Action> Specify a correct character string length and type specifier.

EC022: An error exists in initializing the variable.

<Cause> An error exists in initializing the variable

<Action> Set initializing data as many as elements for array variables.

EC023: The initializing character string is too long.

<Cause> The initializing character string is too long.

<Action> Specify initializing data within the length of the character string in the character string variable.

EC024: Field declaration error.

<Cause> The description of field declaration violates the FIELD statement syntax.

<Action> Declare it correctly.

EC025: The same local variable name is declared.

<Cause> The same local variable name is declared.

<Action> Change the local variable name with the duplicate declaration.

EC026: Another type variable is declared with the same name.

<Cause> Another type variable is declared with the same name.

<Action> Change the variable name.

EC027: An AUTO variable can be declared only in FUNCTION.

<Cause> An AUTO variable can be declared only in the FUNCTION statement.

<Action> Use the LOCAL declaration instead of the AUTO variable declaration.

EC028: A local or AUTO variable cannot be declared in FIELD.

<Cause> A local or AUTO variable cannot be declared in the FIELD statement.

<Action> Use a GLOBAL, STATIC, or BACKUP variable in the FIELD declaration.

EC029: Variable initialization cannot be declared in FUNCTION or a subroutine.

<Cause> Variable initialization cannot be declared in the FUNCTION statement or a subroutine.

<Action> Remove initializing variables other than an AUTO variable from the FUNCTION statement or a subroutine.

EC030: A local variable cannot be declared in a global screen or library function.

<Cause> A local variable cannot be declared in a global screen or library function.

<Action> Cancel the local variable declaration. In a global screen, use a GLOBAL, STATIC, or BACKUP variable. In the library function, use the AUTO variable.

EC031: A value of the argument is invalid in checking a local variable.

<Cause> The description of the argument violates the LOCAL CHECK statement syntax.

<Action> Check the argument type.

EC032: An error exists in the array element declaration.

<Cause> A nonnumeric value is specified for a subscript when the array variable element is designated.

<Action> Specify a numeric value to a subscript to access an array variable.

EC033: A variable of ID type cannot be initialized.

<Cause> A variable of ID type cannot be initialized.

<Action> Do not initialize a variable of ID type.

EC034: The device name is invalid.

<Cause> The description of the device name is invalid.

<Action> Specify a correct device name.

EC035: An error exists in the device name declaration.

<Cause> An error exists in the device name declaration.

<Action> Specify a correct device name.

EC036: An error exists in the device name description. (The name is too long.)

<Cause> An error exists in the device name description. (The name is too long.)

<Action> Specify a correct device name.

EC037: This device is write-protected.

<Cause> This device is write-protected.

<Action> Do not apply write operation to a write-protected.

-
- EC038:** No device can be used since the PLC is not set in the connection device.
- <Cause> No device can be used since the PLC is not set in the connection device.
- <Action> Set PLC in the connection device.
-
- EC039:** CYCLIC2 declaration cannot be applied to the device.
- <Cause> CYCLIC2 declaration cannot be applied to the device.
- <Action> Do not apply the CYCLIC2 declaration to the device.
-
- EC040:** The device name specification is outside the range.
- <Cause> The device name specifies the outside of the permitted range.
- <Action> Specify a correct device name.
-
- EC041:** The PLC device cannot be used in a library function.
- <Cause> The PLC device cannot be used in a library function
- <Action> Do not use the device.
-
- EC042:** No memory table can be used since no host is specified in the connection device.
- <Cause> No memory table can be used since no host is specified in the connection device.
- <Action> Add the host in the connection device.
-
- EC043:** The memory table number exceeds 2048 in the CYCLIC declaration.
- <Cause> The memory table number exceeds 2048 in the CYCLIC declaration.
- <Action> Memory tables you can use are 0 through 2047.
-
- EC044:** The memory table number must be a numeric constant in the memory table CYCLIC declaration.
- <Cause> The memory table number must be a numeric constant in the memory table CYCLIC declaration.
- <Action> Specify the memory table number with an integer.
-
- EC045:** The memory table number must be an integer.
- <Cause> The memory table number must be an integer.
- <Action> Specify the memory table number with an integer.
-
- EC046:** The memory table continuous declaration must be made with an integer.
- <Cause> The memory table continuous declaration must be made with an integer.
- <Action> Specify the continuous declaration with an integer.
-
- EC047:** The memory table number must be a constant in memory table ID comparison.
- <Cause> The memory table number must be a constant in memory table ID comparison.
-

<Action> Specify a memory table number with an integer.

EC048: An error exists in the memory table declaration.

<Cause> An error exists in the memory table declaration.

<Action> Specify a correct memory table.

EC049: No outside device is set.

<Cause> No outside equipment is set.

<Action> Specify a declared device as outside equipment.

EC050: The library function source does not exist.

<Cause> The library function source does not exist.

<Action> The library function you want to use cannot be found. Check that the library function exists.

EC051: Only one function block can be declared.

<Cause> Two or more functions are created at the same time in the library function creation feature.

<Action> Create one library function at a time.

EC052: The specified library function does not exist.

<Cause> The specified library function does not exist.

<Action> The library function you want to use cannot be found. Check that the library function exists.

EC053: No subroutine can be specified in a function block.

<Cause> No subroutine can be specified in a user-defined function block.

<Action> Delete the subroutine.

EC054: The INIT block has already been declared.

<Cause> Two or more INIT blocks are declared.

<Action> Declare one INIT block.

EC055: The CONF block has already been declared.

<Cause> Two or more CONF blocks are declared.

<Action> Declare one CONF block.

EC056: The EVNT block has already been declared.

<Cause> Two or more EVNT blocks are declared.

<Action> Declare one EVNT block.

EC057: An EVNT block cannot be specified in a global screen.

<Cause> An event block is specified in a global screen.

<Action> Delete the event block.

EC058: The start and end block declarations are invalid.

<Cause> The start block declaration does not correspond to the end block declaration.

<Action> Declare the start and end blocks correctly.

EC059: The same name function has already been declared.

<Cause> The function declaration is duplicated.

<Action> Do not duplicate the function declaration.

EC060: The specified function is not declared.

<Cause> The specified function is not declared.

<Action> Declare (DECLARE) the function.

EC061: The function argument is not the declared one.

<Cause> The function argument is not the declared one.

<Action> Declare the function correctly.

EC062: Only a constant or variable can be specified as an argument for a function.

<Cause> The function argument is other than a constant or variable.

<Action> Specify a function argument correctly.

EC063: The number of function arguments cannot exceed 20.

<Cause> The number of function arguments exceeds 20.

<Action> Reduce the number of the arguments to be 20 or fewer.

EC064: EXIT FUNCTION can be declared only in a function block.

<Cause> EXIT FUNCTION is used in other than a function block.

<Action> Stop using EXIT FUNCTION.

EC065: A name declared as a function is used for a variable.

<Cause> A name declared as a function is used for a variable.

<Action> Change the variable or function name.

EC066: The function name cannot be declared with this name.

<Cause> An error exists in the function name in the DECLARE declaration.

<Action> Specify the function name correctly.

EC067: A function with the same name exists in the library function.

<Cause> The created function exists in the library.

<Action> Change the function name.

EC068: The same name subroutine or label exists.

<Cause> The same name subroutine or label exists.

<Action> Do not duplicate a subroutine or label name.

EC069: A logical device name must be specified in an OPENCOM argument.

<Cause> A logical device name must be specified as an argument in the OPENCOM function.

<Action> Specify a logical device name in an OPENCOM argument.

EC070: Only TKY, BCR, or HST can be specified in an OPENCOM argument.

<Cause> The OPENCOM argument is invalid.

<Action> Specify only TKY, BCR, or HST in the OPENCOM argument.

EC071: An error exists in the function or command argument.

<Cause> An error exists in a function or command argument.

<Action> Specify a correct argument.

EC072: This PIO has already been declared.

<Cause> The same PIO is declared two or more times.

<Action> Declare the PIO only once.

EC073: The number of function arguments is invalid.

<Cause> The number of function arguments is incorrect.

<Action> Specify correct arguments.

EC074: No device name can be used for an argument.

<Cause> No device name can be used for a function argument.

<Action> Specify a correct argument.

EC075: The argument is not a variable.

<Cause> A variable is not specified for a function argument that must be a variable.

<Action> Specify a correct argument.

EC076: The argument type is invalid.

<Cause> The type of the function argument is incorrect.

<Action> Specify a correct argument.

EC077: The comparison type of the SELECT statement does not agree with that of the CASE statement.

<Cause> The comparison type of the SELECT statement does not agree with that of the CASE statement.

<Action> Specify a correct type in the CASE statement.

EC078: An error exists in the FOR NEXT statement.

<Cause> The comparison type of the SELECT statement does not agree with that of the CASE statement.

<Action> Correct the error in the descriptions in the FOR...TO... statements.

EC079: No device is used in the specified control.

<Cause> A device must be specified in the control when the ADDCYC, ADDCYC2, or ADDCYCID statement is used.

<Action> Check the program to be whether a device is specified or the ADDCYC statement is used.

EC080: The type cannot be specified in a global variable.

<Cause> You attempted to combine a variable, which cannot be a global variable when a screen file is linked.

<Action> Contact the technical support of this company.

2-3 Errors in Creating Downloading Data

EL000: The component area exceeds the screen area.

<Cause> A component is arranged outside the usable screen area.

<Action> Change the arranging position of the component.

EL001: An invalid control exists in Screen [---] or Component [---].

<Cause> A control that this compiler cannot recognize is arranged.

Screen or component data may be destroyed.

<Action> Delete the control used for the component and arrange a control again. If not being able to isolate the cause of the error, contact the technical support of this company.

EL002: The code for data operation is invalid.

<Cause> An error exists in control data operation description.

<Action> Correct the control data operation description.

EL003: Since an invalid drawing element is found, the creating operation is canceled.

<Cause> 1. The compiler cannot recognize the drawn element.

2. Screen or component data may be destroyed.

<Action> Delete the element and arrange a drawing element again. If not being able to isolate the cause of the error, contact the technical support of this company.

EL004: Save Screen [---] again.

<Cause> This error may cause when a pattern is drawn in a global screen or a fixed component is arranged.

<Action> Save the global screen once more and create data.

EL005: Global Screen [---] does not exist.

<Cause> The global screen does not exist.

<Action> Create the global screen specified with [Properties] of [Project].

EL006: Screen [---] does not exist.

<Cause> Recorded screen data does not exist.

<Action> Correct data of the recorded screen or create a screen.

EL007: Screen [---] cannot be open.

<Cause> 1. An error occurs in your computer.

2. Screen data may be destroyed.

<Action> 1. Start Screen Creator again.

2. Check that the computer file system is healthy.

EL008: Loading Screen [---] failed.

- <Cause> 1. An error occurs in your computer.
2. Screen data may be destroyed.
- <Action> 1. Start Screen Creator again.
2. Check that the computer file system is healthy.

EL009: Creating data for Screen [---] failed.

- <Cause> 1. Free space in the project folder is too small.
2. An error may occur in your computer.
- <Action> Check the free space.

EL010: Control [---] does not exist.

- <Cause> The control written in the program does not exist.
- <Action> Check the program and correct it on an as-needed basis.

EL020: The variable types are different between Screen [---], Component [---] and Screen [---], Component [---].

- <Cause> The declaration types of the global/backup variables are mismatching, which are used with two or more positions.
- <Action> Correct the program.

EL021: The variable types are different between Screen [---], Component [---] and the system function.

- <Cause> The declaration types of the global/backup variables are mismatching, which are used with two or more positions.
- <Action> Correct the program.

EL022: The initialization information exists in two places. (Screen [---], Component [---] and Screen [---], Component [---])

- <Cause> Initialization for the global/backup variables, shared by two or more programs, at the time of declaration is performed in two or more places.
- <Action> Correct the programs.

EL023: Substance of Function [---] does not exist.

- <Cause> This error may occur if a function is deleted or a function name is changed after creation of the screen.
- <Action> Create a function or cancel the reference of the non-existing function.

EL024: Substance of Subroutine [---] does not exist.

- <Cause> The substance of the called subroutine does not exist.
- <Action> Create a subroutine or cancel the reference of the non-existing subroutine.

EL030: Texture [---.TEX] does not exist.

<Cause> The texture used in the program or control does not exist.

- <Action>
1. Create the texture.
 2. Copy a texture and record it.

EL031: Texture [---.TEX] is destroyed.

<Cause> The texture may be destroyed.

<Action> Re-create the texture.

EL040: Bit map [---.BMP] does not exist.

<Cause> The bit map used in the screen or texture does not exist.

- <Action>
1. Create a bit map.
 2. Copy a bit map and record it.

EL041: Bit map [---.BMP] is destroyed.

<Cause> The bit map may be destroyed.

<Action> Re-create the bit map.

EL050: Character string [---] does not exist.

<Cause> The character string used in the program does not exist.

- <Action>
1. Create the character string.
 2. Copy a character string and record it.

EL060: An error in the connected equipment (PLC): The PLC of this type is not supported.

<Cause> This compiler cannot generate data for the selected PLC.

<Action> Check the version of Screen Creator.

EL061: The number of devices arranged in one screen exceeds 16000.

<Cause> A screen exists, which uses the number of PLC devices whose upper limit exceeds (16000).

<Action> Correct the screen.

EL062: The number of continuous Device [---] specifications exceeds the limit.

<Cause> The number of continuous device specifications with the BREAD/BWRITE statement exceeds the limit. The range depends on PLC types.

<Action> Reduce the number of continuous device specifications.

EL063: The number of devices on the global screen exceeds the limit.

<Cause> The number of global screen devices plus the sum of sampling devices exceed 16383 (upper limit).

<Action> Reduce the number of devices.

EL064: The sum of [---] communication devices exceeds the limit.

<Cause> The sum of communication (read/write) devices in local/global screens exceeds 49151 (upper limit).

<Action> Reduce the total number of devices.

EL065: The sum of [---] communication protocols exceeds the limit.

<Cause> The sum of communication (cyclic/event) protocols in local/global screens exceeds 64 KB.

<Action> Reduce the number of using devices or use devices in screens continuously as long as you can.

EL070: User-defined file [---] does not exist.

<Cause> The user-defined file created by Screen Creator III does not exist.

<Action> Restore original data created by Screen Creator III again.

EL071: The connection equipment information file does not exist.

<Cause> The connection equipment information file is not found.

<Action> Install Screen Creator 5 again.

EL080: The backup memory capacity exceeds 63 KB.

<Cause> The capacity of the backup memory exceeds that of the OIP memory.

<Action> Change the operation program to reduce using amount of the backup memory. The using amount of the backup memory includes the allocated memory file capacity set by the OIP and the upper limit is 63 KB. Thus if this error does not occur, the OIP may detect the error during downloading.

2-4 Warnings in Creating Downloading Data

WL000: Screen [---] is not recorded.

<Cause> The screen used in the program is not recorded.

<Action> Record the screen.

WL001: Component [---] does not exist.

<Cause> The component used in the program is not found.

<Action> Arrange the component.

WL002: Texture [---.TEX] has been changed.

<Cause> The size of the texture used in the [Slider] control has been changed after screen data creation.

<Action> Go into [Edit contents] of the component using [Slider] and check the texture.

WL010: Function [---] is used by a global function.

<Cause> The declared function is the same as that used in the screen program in a global screen.

<Action> Change the function name.

WL011: Subroutine [---] is used by a global subroutine.

<Cause> The declared subroutine is the same as that used in the screen program in a global screen.

<Action> Change the subroutine name.

WL020: The system memory exceeds 512 KB. A system-RAM-insufficient error may occur.

<Cause> Used amount of the system memory approaches the limit of the OIP memory.

<Action> Perform downloading and display all screens. If the system RAM insufficient error does not occur, you do not care for the warning. If the error occurs, change the screen data or operation program to reduce memory use amount.

WL021: The backup variable is handled as a global variable in this panel.

<Cause> No backup battery exists in an OIP Jr system. Thus a specified backup variable is interpreted as a global variable.

<Action> Since the backup variable is handled as a global variable, the backup function is ignored. The other functions are not affected.

CHAPTER 3

ERRORS AT OIP OPERATION

3-1 Error Display at OIP Operation

This chapter describes errors to occur during OIP operations.

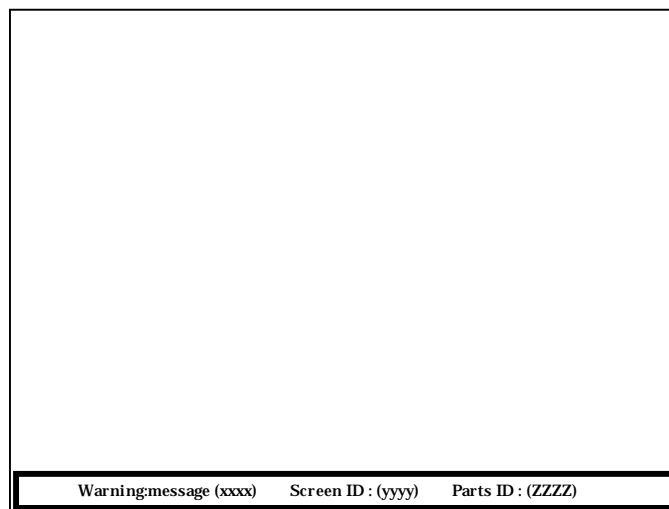
If an error occurs during OIP operation, its message appears in the OIP screen. You can select one of two locations for displaying the error message: one is on the error indicator placed in a global screen and the other is at the bottom of the screen. You can specify the error displaying location in [Error display setting] in [System setting] in the OIP main body.

The following two figures represent that the error message is displayed on the error indicator and at the bottom of the screen.



Error display on the error indicator

On the error indicator, the [Various error information] window displays such error information as an error type, a four-character error code, screen number and component number. At the center of the indicator, brief explanation of the error is displayed.



Error display at the bottom of the screen

At the bottom of the screen, the [Various error information] section displays such error information as an error type, a four-character error code, screen number and component number. At the center of the

indicator, brief explanation of the error is displayed.

Errors that possibly occur are classified into the types listed in the following table. The error codes and their explanations are presented in the next and following pages in the order of the codes.

Item	Description	Message	Error Code
System error	This error is detected if an error exists in main CPU operation.	Main CPU error	1
Serial communication error	This error is detected during serial communication.	Serial communication error	2
Downloading/uploading error	This error is detected during downloading/uploading operation.	Downloading error	3
User application error	This error is detected in processing a message.	Message execution error	4
	This error is detected in executing an operation program.	Program execution error.	5
	This error is detected at issuing an excessive message.	Message full	6
	This error is detected when trouble occurs in a peripheral device.	Warning	8
System error	This error is detected if trouble occurs in the OIP.	System error	7

The errors listed in the following table may occur in addition to the above ones.

Error Code	Error	Countermeasure/Action
7	Insufficient capacity of the system RAM Insufficient number of the system RAM	The used RAM memory exceeds the system memory limit. Check the used system memory capacity, referencing "Used Memory List" in Screen Creator 5.
12	Invalid clock operation (note)	The clock IC operation is unstable. This error may occur when the back up battery voltage is low. If you do not use the clock function, set "1" to the "clock-operation error mask" in the Action Parameter in the Error Indicator.
15	Battery voltage drop (note)	The OIP backup battery has been exhausted. Replace the battery. If you do not want to detect this error, set "1" to the "battery-voltage-drop error mask" in the Action Parameter in the Error Indicator.

Note: Since a backup battery cannot be fixed to GC53LC/LM, this error does not occur.

3-2 Errors at Main CPU Detecting Trouble

Error Code 1:

Error Code	Error	Countermeasure/Action
1001	Program execution at address 0	Check the versions of Screen Creator generation downloading data and of the OIP system. Then contact the technical support of this company.
1002	Bus error	
1003	Address error	
1004	Illegal statement	
1005	Zero divisor	
1006	CHK statement	
1007	TRAPV statement	
1008	Illegal privilege	
1009	Trace	
1010	Line 1010 emulator	
1011	Line 1111 emulator	
1012 to 1063	16)Interrupt at main CPU	

3-3 Errors during Serial Communication

Error Code 2:

Error Code	Error	Countermeasure/Action
2000 to 2255	Errors at the destination. Error codes at the destination are displayed in the lower three digits of the error codes (CH1).	Check the destination error code and take measures. If the PLC is not connected, the investigation should be centered on devices that do not exist on the PLC side.
2300 to 2555	Errors at the destination. Error codes at the destination plus 300 are displayed in the lower three digits of the error codes (CH2).	
2600 to 2855	Errors at the destination. Error codes at the destination plus 600 are displayed in the lower three digits of the error codes (CH3).	
2901	Parity error (CH1)	Check that the communication conditions agree with the connection equipment.
2902	Overrun error (CH1)	
2903	Framing error (CH1)	
2904	Receive data error (CH1)	Check the receiving date format. (The investigation should be centered on the presence/absence of a checksum.
2905	Timeout error (CH1)	Check the following items: <ul style="list-style-type: none"> • Communication cables • PLC station number • Setting value of time out interval • Destination condition • Link unit settings
2931	Parity error (CH2)	Same as CH1
2932	Overrun error (CH2)	
2933	Framing error (CH2)	
2934	Receive data error (CH2)	
2935	Timeout error (CH2)	
2961	Parity error (CH3)	Same as CH1
2962	Overrun error (CH3)	
2963	Framing error (CH3)	
2964	Receive data error (CH3)	
2965	Timeout error (CH3)	

3-4 Errors during Downloading/Uploading

Error Code 3:

Error Code	Error	Countermeasure/Action
3361	Flush ROM erasing error (ROM 1)	Perform downloading again. If the same error still occurs, contact the technical support of this company.
3362	Flush ROM erasing error (ROM 2)	
3364	Flush ROM erasing error (ROM 3)	
6638	Flush ROM erasing error (ROM 4)	
6420	Downloading to EPROM (Downloading unavailable)	The OIP that cannot perform downloading.
6430	User area insufficient (Downloading unavailable)	Reduce the data amount.
6431	No downloading data (Uploading unavailable)	The data has not been downloaded.
3461	Flush ROM erasing error (0 - 15 blocks)	Perform downloading again. If the same error still occurs, contact the technical support of this company.
3462	Flush ROM erasing error (0 - 15 blocks)	
3464	VPP drop error	
3468	Other flush ROM error	
3481	The specified transfer rate is invalid.	Check the versions of Screen Creator generation downloading data and of the OIP system. Then contact the technical support of this company.
3482	The specified number of transfer blocks is invalid.	
3483	The specified last data length is invalid.	
3491	The specified transfer rate is invalid.	
3671	Flush ROM write error (ROM 1)	Perform downloading again. If the same error still occurs, contact the technical support of this company.
3672	Flush ROM write error (ROM 2)	
3674	Flush ROM write error (ROM 3)	
3678	Flush ROM write error (ROM 4)	
3684	Invalid BID	Check the versions of Screen Creator generation downloading data and of the OIP system. Then contact the technical support of this company.
3871	Flush ROM write error (ROM 1)	Perform downloading again. If the same error still occurs, contact the technical support of this company.
3872	Flush ROM write error (ROM 2)	
3874	Flush ROM write error (ROM 3)	
3878	Flush ROM write error (ROM 4)	

3-5 Errors during Message Process

Error Code 4:

Error Code	Error	Countermeasure/Action
4110	Message buffer file for serial transmission	Check the screen or operation program that caused the error and correct it.
4200	A not-recorded screen was specified.	
4201	A non-existing component was specified.	
4202	A non-existing indicator (switch) was specified.	
4300	In the K-Basic JUMP statement, a screen that has not been recorded is specified.	
4310	In the K-Basic OPEN statement: <ul style="list-style-type: none"> • a non-existing component is specified. • a member in group components is specified. • an internal data error in the module occurs. 	
4500	A not-supported message was received.	Check the versions of Screen Creator generation downloading data and of the OIP system. Then contact the technical support of this company.
4510	Receive message size error.	
4520	Receive message buffer overflow	

3-6 Errors during Operation Program Execution

Error Code 5:

Error Code	Error	Countermeasure/Action
5002	The memory area is insufficient.	The used amount of the system or backup memory exceeds the OIP capacity. Check the used amount of the memory with Screen Creator. If the backup memory is used for a memory file, reduce the allocated size. In addition, check the operation program to reduce system or backup memory consumption.
5003	The K-Basic work area is insufficient.	
5004	The backup memory capacity is insufficient.	
5110	In the K-Basic RUN statement, other than a screen (component) is specified.	
5158	In the K-Basic FIELD statement, the specified file number is invalid.	Check the screen or operation program that caused the error and correct it.
5205	The subscript for an array variable is invalid or an error occurs during PLC device reading (writing).	
5206	The subscript for an array variable is invalid or an error occurs during PLC device reading (writing).	
5216	In the K-Basic BWRITE statement: <ul style="list-style-type: none"> the argument variable type is invalid. the array variable subscript is invalid. a PLC device write error occurs. a memory table write error occurs. 	
5217	In the K-Basic BREAD statement: <ul style="list-style-type: none"> the argument variable type is invalid. the array variable subscript is invalid. a PLC device read error occurs. a memory table read error occurs. 	
5218	The subscript for an array variable is invalid or an error occurs during memory table reading (writing).	
5219	The subscript for an array variable is invalid or an error occurs during memory table reading (writing).	
5220	In the K-Basic BWRITE statement: <ul style="list-style-type: none"> the argument variable type is invalid. the array variable subscript is invalid. a PLC device write error occurs. a memory table write error occurs. 	
5221	In the K-Basic BREAD statement: <ul style="list-style-type: none"> Invalid argument variable type Invalid array variable subscript PLC device read error Memory table read error 	

Error Code	Error	Countermeasure/Action
5222	In the K-Basic DEVWR statement: <ul style="list-style-type: none"> the PLC device ID is invalid. a PLC device write error occurs. 	Check the screen or operation program that caused the error and correct it.
5223	In the K-Basic DEVRD statement: <ul style="list-style-type: none"> the PLC device ID is invalid. the argument variable type is invalid. the array variable subscript is invalid a PLC device write error occurs. 	
5253	Zero divisor occurs.	
5268	Zero divisor occurs (MOD).	
5267	In the K-Basic BCD2BIN statement, a BDC format error occurs.	
5269	In the K-Basic GETOFFSET statement: <ul style="list-style-type: none"> the operated ID type is invalid. an operation between different types occurs. the PLC device ID is invalid. 	
5270	In the K-Basic GETID statement: <ul style="list-style-type: none"> the operated ID type is invalid. the PLC device ID is invalid. 	
5271	In the K-Basic SHIFT statement: <ul style="list-style-type: none"> other than an integer (array) variable is specified. the array variable subscript is invalid. 	
5272	In the K-Basic BITSET statement: <ul style="list-style-type: none"> other than an integer (array) variable is specified. the array variable subscript is invalid. 	
5273	In the K-Basic BITSET statement: <ul style="list-style-type: none"> other than an integer (array) variable is specified. the array variable subscript is invalid. 	
5274	In the K-Basic EXECPCODE statement: <ul style="list-style-type: none"> other than the designated indicator is specified. the X/Y-specified value is invalid specified is the subscript for an array variable for which other than an integer (array) variable/real number (array) variable. 	
5303	Zero divisor occurs.	
5312	Minus square root operation (SQR) occurs.	
5313	Minus power operation (^) occurs.	
5315	Zero (minus) logarithm operation (LOG) occurs.	
5318	Tangent operation (TAN) $\pm(2n+1)/2\pi$ occurs.	
5350	In the K-Basic JUMP statement, other than a screen is specified.	
5351	In the K-Basic JUMP statement, other than a screen is specified.	
5352	In the K-Basic OPEN statement: <ul style="list-style-type: none"> other than a component is specified. the specified mode is invalid. a member in grouped components is specified. 	
5353	In the K-Basic CLOSE statement: <ul style="list-style-type: none"> other than a component is specified. a member in grouped components is specified. 	

Error Code	Error	Countermeasure/Action
5354	In the K-Basic MOVE statement: <ul style="list-style-type: none"> • other than a component is specified. • the specified moving method is invalid. • a member in grouped components is specified. 	Check the screen or operation program that caused the error and correct it.
5355	In the K-Basic PMODE statement: <ul style="list-style-type: none"> • other than a component is specified. • the specified mode is invalid. • a member in grouped components is specified. 	
5356	In the K-Basic PSTAT statement, other than a component is specified.	
5358	In the K-Basic GETGNO statement, other than a screen is specified.	
5361	In the K-Basic RTSTAT statement: <ul style="list-style-type: none"> • other than a component is specified. • the selected code is invalid. 	
5362	In the K-Basic RSTAT statement: <ul style="list-style-type: none"> • the ID for a logical name is invalid. • the selected code is invalid. 	
5363	In the K-Basic REGISTOFFSET statement: <ul style="list-style-type: none"> • the specified logical name is invalid • the specified offset value is invalid. 	
5400	In the K-Basic DSPMODE statement: <ul style="list-style-type: none"> • other than the designated control type is specified. • the specified mode is invalid. 	
5401	In the K-Basic NUMFORM statement: <ul style="list-style-type: none"> • other than a numeric control is specified. • the specified displaying method is invalid. 	
5402	In the K-Basic STRFORM statement: <ul style="list-style-type: none"> • other than the designated character control is specified. • the specified displaying method is invalid. 	
5403	In the K-Basic FIGFORM statement: <ul style="list-style-type: none"> • other than a figure indicator is specified. • the specified re-sizing is invalid. 	
5404	In the K-Basic ROTATE statement: <ul style="list-style-type: none"> • other than the designated control type is specified. • the specified rotational angle is invalid. 	
5405	In the K-Basic RANGE statement: <ul style="list-style-type: none"> • other than the designated control type is specified. • Zero divisor occurs. 	
5406	The K-Basic CLEAR statement causes a specification of other than the designated control type.	
5407	The K-Basic NUMDSP or LAMPDSP statement causes a specification of other than a numeric indicator or lamp control.	
5408	The K-Basic NUMDSP statement causes a specification of other than a numeric indicator.	
5409	The K-Basic STRDSP statement causes a specification of other than a character indicator.	
5410	The K-Basic STRDSP statement causes a specification of other than a character indicator.	
5411	The K-Basic FIGDSP statement causes a specification of other than a figure indicator.	

Error Code	Error	Countermeasure/Action
5412	The K-Basic FREDSP, SLDDSP, or MTRDSP statement causes a specification of other than the designated control type.	Check the screen or operation program that caused the error and correct it.
5413	The K-Basic PLTDSP statement causes a specification of other than a plot graph.	
5414	In the K-Basic BARDSP or BLTDSP statement: <ul style="list-style-type: none"> • other than the designated control type is specified. • the specified bar (zone) number is invalid. 	
5415	In the K-Basic LINEDSP statement: <ul style="list-style-type: none"> • other than a line graph is specified. • the specified line number or point number is invalid. 	
5416	In the K-Basic BARSHIFT statement: <ul style="list-style-type: none"> • other than a bar graph is specified. • the specified shift direction is invalid. 	
5417	In the K-Basic LNEShift statement: <ul style="list-style-type: none"> • other than a line graph is specified. • the specified line number or point number is invalid. 	
5418	In the K-Basic NUMCOLOR, STRCOLOR, or PLTCOLOR statement: <ul style="list-style-type: none"> • other than the designated control type is specified. • the specified display color is invalid. • the specified tile, for-color, or back-color is invalid. 	
5419	In the K-Basic FIGCOLOR statement: <ul style="list-style-type: none"> • other than a figure indicator is specified. • the specified tile, for-color, or back-color is invalid. 	
5420	In the K-Basic FRECOLOR statement: <ul style="list-style-type: none"> • other than a free graph is specified. • specified tile 1, for-color 1, or back-color 1 is invalid. • specified tile 2, for-color 2, or back-color 2 is invalid. 	
5421	In the K-Basic LNECOLOR statement: <ul style="list-style-type: none"> • other than a line graph is specified. • the specified line number is invalid. • the specified line type or line color is invalid. • the specified tile, for-color, or back-color is invalid. 	
5422	In the K-Basic BLTCOLOR or CIRCOLOR statement: <ul style="list-style-type: none"> • other than the designated control type is specified. • the specified zone number is invalid. • the specified tile, for-color, or back-color is invalid. 	
5423	In the K-Basic MTRCOLOR or LAMPCOLOR statement: <ul style="list-style-type: none"> • other than a meter or lamp is specified. • the specified display color is invalid. 	
5424	In the K-Basic BARCOLOR statement: <ul style="list-style-type: none"> • other than a bar graph is invalid. • the specified bar number is invalid. • specified tile 1, for-color 1, or back-color 1 is invalid. • specified tile 2, for-color 2, or back-color 2 is invalid. 	
5425	The K-Basic STRDSP statement causes a specification of other than a character indicator.	
5426	The K-Basic FIGDSP statement causes a specification of other than a figure indicator.	
5427	The K-Basic PRDSP statement causes a specification of other than the designated control type.	

Error Code	Error	Countermeasure/Action
5428	In the K-Basic BARSET, BLTSET or CIRSET statement: <ul style="list-style-type: none"> • other than the designated control type is specified. • the specified bar (zone) number is invalid. 	Check the screen or operation program that caused the error and correct it.
5429	In the K-Basic LNESET statement: <ul style="list-style-type: none"> • other than a line graph is specified. • the specified line number or point number is invalid. 	
5430	In the K-Basic LNESHIFT2 statement: <ul style="list-style-type: none"> • other than a line graph is specified. • the specified line number or shift direction is invalid. 	
5431	The K-Basic FREDSP, SLDDSP, or MTRDSP statement causes a specification of other than the designated control type.	
5432	The K-Basic PLTDSP statement causes a specification of other than a plot graph.	
5433	In the K-Basic BARDSP, BLTDSP, or CIRDSP statement: <ul style="list-style-type: none"> • other than the designated control type is specified. • the specified bar (zone) number is invalid. 	
5434	In the K-Basic LNEEDSP statement: <ul style="list-style-type: none"> • other than a line graph is specified. • the specified line number or point number is invalid. 	
5435	In the K-Basic BARSHIFT statement: <ul style="list-style-type: none"> • other than a bar graph is specified. • the specified shift direction is invalid. 	
5436	In the K-Basic LNESHIFT statement: <ul style="list-style-type: none"> • other than a line graph is specified. • the specified line number or shift direction is invalid. 	
5437	In the K-Basic BARSET, BLTSET, or CIRSET statement: <ul style="list-style-type: none"> • other than the designated type is specified. • the specified bar (zone) number is invalid. 	
5438	In the K-Basic LNESET statement: <ul style="list-style-type: none"> • other than a line graph is specified. • the specified line number or point number is invalid. 	
5439	In the K-Basic LNESHIFT2 statement: <ul style="list-style-type: none"> • other than a line graph is specified. • the specified line number or shift direction is invalid. 	
5441	In the K-Basic STRDSP statement: <ul style="list-style-type: none"> • other than a character indicator is specified. • the character string variable is invalid. 	
5442	In the K-Basic PIPECOLOR statement: <ul style="list-style-type: none"> • other than a pipe is specified. • the specified ON1, ON2/OFF state is invalid. • the specified color in the pipe is invalid. 	
5450	In the K-Basic SWMODE statement: <ul style="list-style-type: none"> • other than a switch control is specified. • the specified model is invalid. 	
5451	In the K-Basic SWWRITE statement: <ul style="list-style-type: none"> • other than a switch control is specified. • the specified status is invalid. 	
5452	The K-Basic SWREAD statement causes a specification of other than a switch control.	

Error Code	Error	Countermeasure/Action
5453	In the K-Basic SWREV statement: <ul style="list-style-type: none"> • other than a switch control is specified. • the specified operation is invalid. 	Check the screen or operation program that caused the error and correct it.
5454	In the K-Basic SWFIG statement: <ul style="list-style-type: none"> • other than a switch control is specified. • the specified a sub-switch number is invalid. • the specified status is invalid. 	
5455	In the K-Basic PRMCTL1 statement: <ul style="list-style-type: none"> • other than the designated control/switch control type is specified. • the specified selection code is invalid. • control/switch control setting is invalid. 	
5456	In the K-Basic PRMSTAT1 statement: <ul style="list-style-type: none"> • other than the designated control/switch control type is specified. • the specified selection code is invalid. 	
5457	In the K-Basic PRMCTL2 statement: <ul style="list-style-type: none"> • other than the designated control/switch control type is specified. • the specified selection code is invalid. • the specified auxiliary selection is invalid. 	
5458	In the K-Basic PRMSTAT2 statement: <ul style="list-style-type: none"> • other than the designated control/switch control type is specified. • the specified selection code is invalid. • the specified auxiliary selection is invalid. 	
5459	In the K-Basic PRMCTL3 statement: <ul style="list-style-type: none"> • other than the designated control/switch control type is specified. • the specified selection code is invalid. • the specified auxiliary selection is invalid. • indicator/switch setting is invalid. 	
5460	In the K-Basic PRMSTAT3 statement: <ul style="list-style-type: none"> • other than the designated control/switch control type is specified. • the specified selection code is invalid. • the specified auxiliary selection is invalid. 	
5461	In the K-Basic PRMCTL4 statement: <ul style="list-style-type: none"> • other than the designated control/switch control type is specified. • an invalid selection code is specified. 	
5462	In the K-Basic PRMSTAT4 statement: <ul style="list-style-type: none"> • the designated control/switch control type is specified. • the specified selection code is invalid. • the specified auxiliary selection is invalid. 	
5500	In the K-Basic INPUT statement, an invalid subscript for an array variable is specified.	
5501	In the K-Basic PRINT statement: <ul style="list-style-type: none"> • an invalid subscript for an array variable is specified. • the send message buffer overflows. 	
5502	In the K-Basic SEND statement: <ul style="list-style-type: none"> • a destination that cannot receive messages is specified. • the specified logical device is specified, which cannot send messages. 	
5503	In the K-Basic CLOSECOM statement: <ul style="list-style-type: none"> • a logical device other than serial communication is specified. • the specified logical device is not opened. 	

Error Code	Error	Countermeasure/Action
5504	In the K-Basic REOPENCOM statement: <ul style="list-style-type: none"> • a logical device other than serial communication is specified. • the specified logical device is not opened. 	Check the screen or operation program that caused the error and correct it.
5505	In the K-Basic CLOSEPARALLEL statement, an invalid parallel input bit number is specified.	
5506	In the K-Basic CLOSEPARALLEL statement, an invalid parallel input bit number is specified.	
5507	In the K-Basic IOCTL statement, an invalid control I/O number or status selection value is specified.	
5508	In the K-Basic IOSTAT statement, an invalid control I/O number or status selection value is specified.	
5509	In the K-Basic OPENSIO statement: <ul style="list-style-type: none"> • an invalid channel number is specified. • an invalid communication mode is specified. • other than a character type (array) variable is specified. • an array variable subscript is invalid. • an invalid variable as a receive buffer is specified (a local variable or size zero variable). • an already opened serial port is specified. 	
5510	In the K-Basic CLOSESIO statement: <ul style="list-style-type: none"> • an invalid channel number is specified. • a serial port that has not been opened is specified. 	
5511	In the K-Basic SETSIO statement: <ul style="list-style-type: none"> • an invalid channel number is specified. • a receive text length is invalid (a port opened in the binary mode). • a serial port that has not been opened is specified. 	
5512	In the K-Basic FLUSH statement: <ul style="list-style-type: none"> • an invalid channel number is specified. • a serial port that has not been opened is specified. 	
5513	In the K-Basic WRITESIO statement: <ul style="list-style-type: none"> • an invalid channel number is specified. • other than a character string type (array) variable is specified. • an array variable subscript is invalid. • a serial port that has not been opened in the text mode is specified. 	
5514	In the K-Basic WRITESIOB statement: <ul style="list-style-type: none"> • an invalid channel number is specified. • other than a character string type (array) variable is specified. • an array variable subscript is invalid. • an invalid receive text length is specified.. • a serial port that has not been opened in the binary mode is specified. 	
5515	In the K-Basic IOCTL2 statement: <ul style="list-style-type: none"> • an invalid I/O number is specified. • an invalid PLC device ID is specified. 	
5550	In the K-Basic SETDATE statement: <ul style="list-style-type: none"> • invalid date (year, month, day) is specified. • a write error occurs in a clock device. 	
5551	In the K-Basic GETDATE statement: <ul style="list-style-type: none"> • an array variable subscript is invalid. • a write error occurs in a clock device. 	

Error Code	Error	Countermeasure/Action
5552	In the K-Basic SETTIME statement: <ul style="list-style-type: none"> • an invalid time (hour, minute, second) is specified. • a write error occurs in a clock indicator. 	Check the screen or operation program that caused the error and correct it.
5553	In the K-Basic GETTIME statement: <ul style="list-style-type: none"> • an array variable subscript is invalid. • a read error occurs in a clock indicator. 	
5554	In the K-Basic SETALARM statement: <ul style="list-style-type: none"> • an invalid time (hour, minute) is specified. • no more alarm settings can be made (up to 16). • a write error occurs in a clock indicator. 	
5555	The K-Basic RESETALARM statement causes a write error in a clock indicator.	
5556	The K-Basic OPENTIM statement causes excess timers to be gotten (up to 16).	
5557	In the K-Basic SETTIM statement: <ul style="list-style-type: none"> • an invalid timer number is specified. • a timer in use is specified. 	
5558	In the K-Basic STARTTIM statement: <ul style="list-style-type: none"> • an invalid timer number is specified. • a timer in use is specified. 	
5559	The K-Basic STOPTIM statement causes an invalid specification of a timer number.	
5560	In the K-Basic CONTTIM statement: <ul style="list-style-type: none"> • an invalid timer number is specified. • a timer in use is specified. 	
5561	The K-Basic READTIM statement causes an invalid specification of a timer number.	
5563	The K-Basic SETBEEP statement causes an invalid specification of ON/OFF time or beeping count.	
5564	The K-Basic BEEP statement causes an invalid specification of ON/OFF value.	
5566	The K-Basic COPY statement causes an invalid specification of printing color.	
5567	The K-Basic BLCTL statement causes an invalid specification of ON/OFF value.	
5569	The K-Basic CHKTIM statement causes an invalid specification of a timer number.	
5571	The K-Basic CHKTIM statement causes an invalid specification of a timer number.	
5572	In the K-Basic SETTIM statement: <ul style="list-style-type: none"> • an invalid timer number is specified. • a timer in use is specified. 	
5573	In the K-Basic STARTTIM statement: <ul style="list-style-type: none"> • an invalid timer number is specified. • a timer in use is specified. 	
5574	The K-Basic STOPTIM statement causes an invalid specification of a timer number.	
5575	In the K-Basic CONTTIM statement: <ul style="list-style-type: none"> • the specified timer number is invalid. • a working timer is specified. 	

Error Code	Error	Countermeasure/Action
5576	The K-Basic READTIM statement causes an invalid specification of a timer number.	Check the screen or operation program that caused the error and correct it.
5579	The K-Basic TIMINT statement causes an invalid specification of a timer number.	
5580	The K-Basic COLOR statement causes an invalid specification of a display color, line type, or line width (dot size).	
5581	The K-Basic PATTERN statement causes an invalid specification of a filling pattern, for-color, or back-color.	
5585	The K-Basic INTERLOCK statement causes an invalid specification of setting/releasing.	
5605	The K-Basic SETBLIGHT statement causes an invalid specification of the automatic turn-off time of the backlight.	
5606	The K-Basic GETBLIGHT statement causes an invalid specification of the automatic turn-off time of the backlight.	
5607	The K-Basic SWCLICK statement causes an invalid setting.	
5608	The K-Basic SERIALSET statement causes an invalid setting.	
5609	The K-Basic SERIALREAD statement causes an invalid setting.	
5610	The K-Basic TTYSET statement causes an invalid setting.	
5611	The K-Basic LOOKSYS statement causes an invalid setting.	
5612	The K-Basic PRM_LOAD statement causes an invalid setting.	
5613	The K-Basic TTYREAD statement causes an invalid setting.	
5614	The K-Basic CHECKTTY statement causes an invalid setting.	
5615	The K-Basic GETCLICK statement causes an invalid setting.	
5616	The K-Basic DIRECSET statement causes an invalid setting.	
5617	The K-Basic PRNOUT statement causes an invalid setting.	
5619	The K-Basic PRNSELECT statement causes an invalid setting.	
5621	The K-Basic SETANGLE statement causes an invalid setting of display brightness.	
5622	The K-Basic GETANGLE statement causes an invalid setting of display brightness.	
5623	The K-Basic ERRCTL statement causes an invalid setting.	
5627	The K-Basic GETBOOTVER statement causes an invalid setting.	
5650	The K-Basic INP statement causes an invalid specification of a port number.	
5651	The K-Basic OUT statement causes an invalid specification of a port number.	
5663	The K-Basic LEN statement causes an invalid specification of a recorded character string number.	
5664	In the K-Basic INSTR statement: <ul style="list-style-type: none"> the specified record character string number is invalid. the specified start position is invalid. 	
5665	In the K-Basic INSTR statement: <ul style="list-style-type: none"> the specified record character string number is invalid. the specified start position is invalid. 	
5666	In the K-Basic LEFT\$ statement: <ul style="list-style-type: none"> the specified record character string number is invalid. the specified number of characters is invalid. 	

Error Code	Error	Countermeasure/Action
5667	In the K-Basic LEFT\$ statement: <ul style="list-style-type: none"> the specified record character string number is invalid. the specified number of characters is invalid. 	Check the screen or operation program that caused the error and correct it.
5668	In the K-Basic RIGHT\$ statement: <ul style="list-style-type: none"> the specified record character string number is invalid. the specified number of characters is invalid. 	
5669	In the K-Basic RIGHT\$ statement: <ul style="list-style-type: none"> the specified record character string number is invalid. the specified number of characters is invalid. 	
5670	In the K-Basic MID\$ statement: <ul style="list-style-type: none"> the specified record character string number is invalid. the specified start position is invalid. the specified number of characters is invalid. an argument variable type is invalid. an array variable subscript is invalid. 	
5671	In the K-Basic MID\$ statement: <ul style="list-style-type: none"> the specified record character string number is invalid. the specified start position is invalid. the specified number of characters is invalid. an argument variable type is invalid. an array variable subscript is invalid. 	
5672	In the K-Basic MID\$ statement: <ul style="list-style-type: none"> the specified record character string number is invalid. the specified start position is invalid. the specified number of characters is invalid. an argument variable type is invalid. an array variable subscript is invalid. 	
5673	The K-Basic DATE\$ statement causes a read error of a clock indicator.	
5674	The K-Basic TIME\$ statement causes a read error of a clock indicator.	
5675	The K-Basic LEN statement causes an invalid specification of a recorded character string number.	
5676	In the K-Basic INSTR statement: <ul style="list-style-type: none"> the specified record character string number is invalid. the specified start position is invalid. 	
5677	In the K-Basic LEFT\$ statement: <ul style="list-style-type: none"> the specified record character string number is invalid. the specified number of characters is invalid. 	
5678	In the K-Basic RIGHT\$ statement: <ul style="list-style-type: none"> the specified record character string number is invalid. the specified number of characters is invalid. 	
5679	In the K-Basic MID\$ statement: <ul style="list-style-type: none"> the specified record character string number is invalid. the specified start position is invalid. the specified number of characters is invalid. an argument variable type is invalid. an array variable subscript is invalid. 	
5680	In the K-Basic INPBIT statement: <ul style="list-style-type: none"> the specified port number is invalid. the specified bit number is invalid. 	

Error Code	Error	Countermeasure/Action
5681	In the K-Basic OUTBIT statement: <ul style="list-style-type: none"> the specified port number is invalid. the specified bit number is invalid. 	Check the screen or operation program that caused the error and correct it.
5682	The K-Basic OUTSTAT statement causes an invalid specification of a port number.	
5683	In the K-Basic OUTBITSTAT statement: <ul style="list-style-type: none"> the specified port number is invalid. the specified bit number is invalid. 	
5684	The K-Basic LEN statement causes an invalid specification of a recorded character string number.	
5685	In the K-Basic INSTR statement: <ul style="list-style-type: none"> the specified record character string number is invalid. the specified start position is invalid. 	
5686	In the K-Basic LEFT\$ statement: <ul style="list-style-type: none"> the specified record character string number is invalid. the specified number of characters is invalid. 	
5687	In the K-Basic RIGHT\$ statement: <ul style="list-style-type: none"> the specified record character string number is invalid. the specified number of characters is invalid. 	
5688	In the K-Basic MID\$ statement: <ul style="list-style-type: none"> the specified record character string number is invalid. the specified start position is invalid. the specified number of characters is invalid. an argument variable type is invalid. the array variable subscript is invalid. 	
5700	In the K-Basic CVB statement: <ul style="list-style-type: none"> the specified start position is invalid. other than a character string type (array) variable is specified. the array variable subscript is invalid. 	
5701	In the K-Basic CVW statement: <ul style="list-style-type: none"> the specified start position is invalid. other than a character string type (array) variable is specified. the array variable subscript is invalid. 	
5702	In the K-Basic CVI statement: <ul style="list-style-type: none"> the specified start position is invalid. other than a character string type (array) variable is specified. the array variable subscript is invalid. 	
5703	In the K-Basic CVF statement: <ul style="list-style-type: none"> the specified start position is invalid. other than a character string type (array) variable is specified. the array variable subscript is invalid. 	
5704	In the K-Basic CVID statement: <ul style="list-style-type: none"> the specified start position is invalid. other than a character string type (array) variable is specified. the array variable subscript is invalid. 	
5705	In the K-Basic MKB statement: <ul style="list-style-type: none"> the specified start position is invalid. other than a character string type (array) variable is specified. the array variable subscript is invalid. 	

Error Code	Error	Countermeasure/Action
5706	In the K-Basic MKW statement: <ul style="list-style-type: none"> the specified start position is invalid. other than a character string type (array) variable is specified. the array variable subscript is invalid. 	Check the screen or operation program that caused the error and correct it.
5707	In the K-Basic MKI statement: <ul style="list-style-type: none"> the specified start position is invalid. other than a character string type (array) variable is specified. the array variable subscript is invalid. 	
5708	In the K-Basic MKF statement: <ul style="list-style-type: none"> the specified start position is invalid. other than a character string type (array) variable is specified. the array variable subscript is invalid. 	
5709	In the K-Basic MKID statement: <ul style="list-style-type: none"> the specified start position is invalid. other than a character string type (array) variable is specified. the array variable subscript is invalid. 	
5710	In the K-Basic MKS statement: <ul style="list-style-type: none"> the specified start position is invalid. other than a character string type (array) variable is specified. the array variable subscript is invalid. 	
5713	In the K-Basic LPAD statement: <ul style="list-style-type: none"> other than a character string type (array) variable is specified. the array variable subscript is invalid. 	
5714	In the K-Basic RPAD statement: <ul style="list-style-type: none"> other than a character string type (array) variable is specified. the array variable subscript is invalid. 	
5715	In the K-Basic INS statement: <ul style="list-style-type: none"> the specified start position is invalid. other than a character string type (array) variable is specified. the array variable subscript is invalid. 	
5716	In the K-Basic MCPY statement: <ul style="list-style-type: none"> the specified file number is invalid. other than a character string type (array) variable is specified. the array variable subscript is invalid. the record buffer is not declared (no declaration at FOPEN). 	
5717	In the K-Basic MCPY statement: <ul style="list-style-type: none"> the specified file number is invalid. other than a character string type (array) variable is specified. the array variable subscript is invalid. the record buffer is not declared (no declaration at FOPEN). 	
5750	In the K-Basic FOPEN statement: <ul style="list-style-type: none"> the specified file number is invalid. the specified mode number is invalid (at no record buffer declaration). the file number that has been opened already is specified. the RAM file is not formatted. 	
5751	In the K-Basic FCLOSE statement, an invalid file number is specified.	

Error Code	Error	Countermeasure/Action
5752	In the K-Basic FPRINT statement: <ul style="list-style-type: none"> the specified file number is invalid. the specified record number is invalid. the file number not opened is specified. the record buffer is not declared (no declaration at FOPEN). the RAM file overflowed. 	Check the screen or operation program that caused the error and correct it.
5753	In the K-Basic FWRITE statement: <ul style="list-style-type: none"> the specified file number is invalid. the specified record number is invalid. the file number not opened is specified. the record buffer is not declared (no declaration at FOPEN). the RAM file overflowed. 	
5754	In the K-Basic FINPUT statement: <ul style="list-style-type: none"> the specified file number is invalid. the specified record number is invalid. the file number not opened is specified. the record buffer is not declared (no declaration at FOPEN). the RAM file overflowed. 	
5755	In the K-Basic LINPUT statement: <ul style="list-style-type: none"> the specified file number is invalid. the specified record number is invalid. the file number not opened is specified. the record buffer is not declared (no declaration at FOPEN). the RAM file overflowed. 	
5756	In the K-Basic FPUT statement: <ul style="list-style-type: none"> the specified file number is invalid. the specified record number is invalid. the file number not opened is specified. the record buffer is not declared (no declaration at FOPEN). the RAM file overflowed. 	
5757	In the K-Basic FGET statement: <ul style="list-style-type: none"> the specified file number is invalid. the specified record number is invalid. the file number not opened is specified. the record buffer is not declared (no declaration at FOPEN). the RAM file overflowed. 	
5758	In the K-Basic FSUM statement: <ul style="list-style-type: none"> the specified file number is invalid. the record buffer is not declared (no declaration at FOPEN). 	
5759	In the K-Basic ONFERR statement, an error exists in a component or screen name.	
5760	In the K-Basic EOF statement: <ul style="list-style-type: none"> the specified file number is invalid. the file number not opened is specified. 	
5761	In the K-Basic LOF statement: <ul style="list-style-type: none"> the specified file number is invalid. the file number not opened is specified. 	
5762	In the K-Basic SOF statement: <ul style="list-style-type: none"> the specified file number is invalid. the record buffer is not declared (no declaration at FOPEN). 	

Error Code	Error	Countermeasure/Action
5763	In the K-Basic FORMAT statement: <ul style="list-style-type: none">• the specified drive or file name is invalid.• the file is not allocated (capacity is zero).• the RAM file is being opened.	Check the screen or operation program that caused the error and correct it.
5764	In the K-Basic FSEEK statement: <ul style="list-style-type: none">• the specified file number is invalid.• the base position or offset value is invalid.	
5765	In the K-Basic MKDIR statement, the directory name is invalid.	
5766	In the K-Basic RMDIR statement, the directory name is invalid.	
5767	In the K-Basic CHDIR statement, the directory or drive name is invalid.	
5770	In the K-Basic KILL statement, the file name is invalid.	

3-7 Errors Caused with Too Many Messages Issued

Error Code 6:

Error Code	Error	Countermeasure/Action
6001	K-Basic execution (RUN, JUMP, OPEN, SEND)	The error code at the time an error is detected is not always associated with the excessive message. The code of the last message is displayed. Thus check the screen running in the error condition or the operation program and a device that frequently issues a message. Then correct the program to reduce the frequency of issuing a message.
6002	Serial reception (CH1)	
6003	Serial reception (CH2)	
6004	Serial reception (CH3)	
6005	Parallel input	
6006	Switch input K-Basic execution (SWWRITE)	
6007	System timer operation	
6008	Alarm operation	

3-8 OIP Errors

Error Code 7:

Error Code	Error	Countermeasure/Action
7140	Management information not supported was detected.	Inform the technical support of this company of the error code.
7156	An error in GETBLIGHT	
7159	An error in SERIALREAD	
7161	An error in LOOKSYS	
7163	An error in TTYREAD	
7165	An error in GETCLICK	
7172	An error in GETANGLE	
7177	The array variable subscript value is invalid in GETBOOTVER.	
7200	A message queue open error	
7201	A message queue write error	
7303	Cache overflow	
7305	A drawing request not supported was received.	Inform the technical support of this company of the error code.
7306	An invalid drawing request was received for group components.	
7400	TTY read/write error (Free running communication module)	
7500	An error in transmission data overflow control	
7501	TTY queue open error	
7601	A stop request for logical switch feature was duplicated. The global screen is not recorded.	
7602	The number of recorded logical switches exceeded the limit (640).	
7603	A SWWRITE request was received in the stop state of the logical switch function. A message queue write error.	
7604	The specified switch is not recorded. A module-internal data error	
7605	A parameter for a SWWRITE request is invalid. An error in activating the auto-repeat process	
7606	A recording request was received in operating the logical switch. A message queue open error	
7607	A request of the occurrence of a touch panel event was received in the stop state of the logical switch function.	
7608	A occurrence request error for a touch panel event A message queue open error	
7609	A return request for a logical switch function was duplicated.	
7610	The number of recorded logical switches exceeded the limit (640).	
7611	A sub-module start error (auto-repeat switch)	
7612	A message queue open error	
7613	A message queue write error	
7614	A message queue write error (SWWRITE)	

Error Code	Error	Countermeasure/Action	
7615	A message queue open error (auto-repeat switch)	Inform the technical support of this company of the error code.	
7616	A message queue write error (auto-repeat switch)		
7617	A switch is specified, which has not been recorded in the logical switch table (SWWRITE).		
7618	A switch is specified, which has not been recorded in the logical switch table (SWWRITE).		
7619	A message queue write error (turning off a momentary switch)		
7620	A logical switch table error (terminator code)		
7621	A logical switch table error (switch position or area size)		
7622	A message queue handle value error (SWWRITE)		
7623	A switch is specified, which has not been recorded in the logical switch table (SWREV or SWFIG).		
7624	A switch is specified, which has not been recorded in the logical switch table (function stop).		
7625	A switch is specified, which has not been recorded in the logical switch table (function restore).		
7626	A switch is specified, which has not been recorded in the logical switch table (mask change).		
7627	A switch is specified, which has not been recorded in the logical switch table (switch display).		
7631	A module-internal data error		
7632	A logical switch module operation error		
7633	A message queue write error.		
7634	A logical switch module operation error		
7640	A module-internal data error		
7641	A module-internal data error		
7642	The number of data switches does not agree with that of pieces of management information.		
7643	The communication has not been set.		Set OIP communication.
7644	An invalid number of global screen switches		Inform the technical support of this company of the error code.
7645	An invalid number of current screen switches		
7646	An invalid switch position or area size (outside the screen)		
7647	The global screen has not been recorded.		
7648	A logical switch module operation error		
7649	A component switch record error		
7650	The number of recorded logical switches exceeded the limit (640). An invalid setting value of downloading data		
7651	A sub-module start error (auto-repeat switch) A message queue write error		
7652	A message queue open error		
7653	A message queue write error		
7654	A message queue write error (SWWRITE)		
7655	A message queue open error (auto-repeat switch)		
7656	A message queue write error (auto-repeat switch)		
7657	A switch is specified, which has not been recorded in the logical switch table (SWWRITE).		
7658	A switch is specified, which has not been recorded in the logical switch table (SWWRITE).		

Error Code	Error	Countermeasure/Action
7659	A message queue write error (turning off a momentary switch)	Inform the technical support of this company of the error code.
7660	A logical switch table error (terminator code) A message queue write error	
7661	A logical switch table error (switch position or area size) A module-internal data error	
7662	A message queue handle value error (SWWRITE) A logical switch module operation error	
7663	A switch is specified, which has not been recorded in the logical switch table (SWREV, SWFIG).	
7664	A switch is specified, which has not been recorded in the logical switch table (function stop).	
7665	A switch is specified, which has not been recorded in the logical switch table (function restore).	
7666	A switch is specified, which has not been recorded in the logical switch table (mask change).	
7667	A switch is specified, which has not been recorded in the logical switch table (switch display).	
7670	An invalid module internal data	
7671	An invalid module internal data	
7675	A message queue write error	
7676	Invalid switch primitive information	
7677	A logical switch module operation error	
7678	A logical switch module operation error	
7679	A logical switch module operation error	
7680	A logical switch module operation error	
7681	A logical switch module operation error	
7682	A logical switch module operation error	
7683	A logical switch module operation error	
7684	A logical switch module operation error	
7685	A logical switch module operation error	
7692	The system area is used (memory link communication)	
7700	A message queue open error	
7701	A message queue write error	
7750	A message queue open error	
7751	A message queue write error	
7800	An initialization error in the file system	
7801	An initialization error in the file system	
7802	A function without a driver is called in the file system.	
7803	An access is made beyond the medium size in the file system.	
7804	The current directory is not set in the file system.	
7810	An initialization error in the memory disk	Check whether or not a RAM file is set.
7811	An initialization error in the memory disk	
7812	A function without a driver is called in the memory disk.	
7813	An access is made beyond the medium size in the memory disk.	Check the operation program and RAM file size.
7814	The current directory is not set in the memory disk.	
7820	An initialization error in the floppy disk	You cannot use a floppy disk.
7821	An initialization error in the floppy disk	

Error Code	Error	Countermeasure/Action
7822	A function without a driver is called in the floppy disk.	You cannot use a floppy disk.
7823	An access is made beyond the medium size in the floppy disk.	
7824	The current directory is not set in the floppy disk.	
7830	An initialization error in the memory card driver (serial type)	Check the memory card.
7831	An initialization error in the memory card driver (serial type)	
7832	A function without a driver is called in the memory card driver (serial type).	Check the operation program and memory card size.
7833	An access is made beyond the medium size in the memory card driver (serial type).	
7834	The current directory is not set in the memory card driver (serial type).	
7840	An initialization error in the memory card driver (bus type)	Check the memory card.
7841	An initialization error in the memory card driver (bus type)	
7842	A function without a driver is called in the memory card driver (bus type).	Check the operation program and memory card size.
7843	An access is made beyond the medium size in the memory card driver (bus type).	
7844	The current directory is not set in the memory card driver (bus type).	
7901 to 7926	An OS error	Inform the technical support of this company of the error code.
7950	Invalid down loading data (backup memory size)	
7951	No screen data exists in downloaded data.	
7952	A message queue open error (error message)	
7953	A message queue write error (error message)	

3-9 Errors in Peripheral Devices

Error Code 8:

Error Code	Error	Countermeasure/Action
8500	Printer time-out	Check peripheral devices (such as memory cards and printers)
8501	The destination port of the serial printer has not been set.	
8800	A file read error in the RAM drive memory file	
8801	A file format error in the RAM drive memory file	
8802	The memory file in the RAM drive is write-protected.	
8803	The memory file in the RAM drive cannot be accessed.	
8804	The memory file in the RAM drive is full.	
8810	A file read error of the MS-DOS file system in the RAM drive	
8811	A file format error of the MS-DOS file system in the RAM drive memory file	
8812	The memory file of the MS-DOS file system in the RAM drive is write-protected.	
8813	The memory file of the MS-DOS file system in the RAM drive cannot be accessed.	
8814	The memory file of the MS-DOS file system in the RAM drive is full.	
8850	A file read error in the memory card drive 1	
8851	A file format error in the memory card drive 1	
8852	A file in the memory card drive 1 is write-protected.	
8853	The file in the memory card drive 1 cannot be accessed.	
8854	The file in the memory card drive 1 is full.	
8860	A file read error in the memory card drive 2	
8861	A file format error in the memory card drive 2	
8862	A file in the memory card drive 2 is write-protected.	
8863	The file in the memory card drive 2 cannot be accessed.	
8864	The file in the memory card drive 2 is full.	

5)