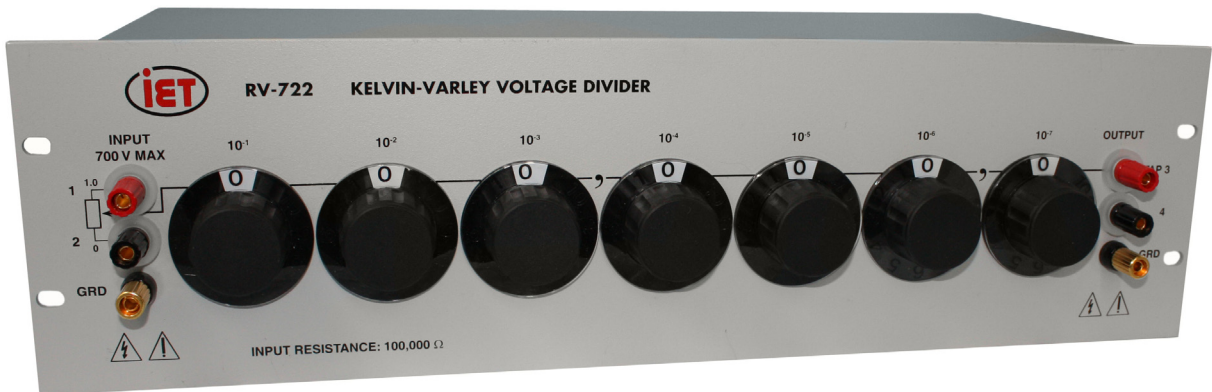


RV-722
Voltage Divider
User and Service Manual
(formerly manufactured by esi)



Copyright © 2009 IET Labs, Inc.
Visit www.ietlabs.com for manual revision updates

RV-722 im/December 2009

◆ PRECISION INSTRUMENTS FOR TEST AND MEASUREMENT ◆



IET LABS, INC.

Email: info@ietlabs.com

www.ietlabs.com

TEL: (516) 334-5959 • (800) 899-8438 • FAX: (516) 334-5988

NOTICE

This manual for the IET Labs Model RV-722 is offered as a convenience.

The IET RV-722 is identical in form and function to the original esi Model RV-722. It has been updated in that it employs sealed switches and hermetically sealed stable resistors.

The esi unit used fixed resistors that allow factory readjustment *only*. And, as esi factory service has not been available, the units had to be discarded if out of specifications. The IET unit offers the user the option of readjustment of the resistors to bring the unit into initial specifications.

This manual contains the same original esi manual information along with more tutorials and background as well as instructions for the optional adjustment of the resistors.

The user may use the original esi manual if preferred.

WARRANTY

We warrant that this product is free from defects in material and workmanship and, when properly used, will perform in accordance with applicable IET specifications. If within one year after original shipment, it is found not to meet this standard, it will be repaired or, at the option of IET, replaced at no charge when returned to IET. Changes in this product not approved by IET or application of voltages or currents greater than those allowed by the specifications shall void this warranty. IET shall not be liable for any indirect, special, or consequential damages, even if notice has been given to the possibility of such damages.

THIS WARRANTY IS IN LIEU OF ALL OTHER WARRANTIES, EXPRESSED OR IMPLIED, INCLUDING BUT NOT LIMITED TO, ANY IMPLIED WARRANTY OF MERCHANTABILITY OR FITNESS FOR ANY PARTICULAR PURPOSE.

**WARNING**

OBSERVE ALL SAFETY RULES
WHEN WORKING WITH HIGH VOLTAGES OR LINE VOLTAGES.

**Dangerous voltages may be present inside this instrument. Do not open the case
Refer servicing to qualified personnel**

HIGH VOLTAGES MAY BE PRESENT AT THE TERMINALS OF THIS INSTRUMENT

WHENEVER HAZARDOUS VOLTAGES (> 45 V) ARE USED, TAKE ALL MEASURES TO
AVOID ACCIDENTAL CONTACT WITH ANY LIVE COMPONENTS.

USE MAXIMUM INSULATION AND MINIMIZE THE USE OF BARE
CONDUCTORS WHEN USING THIS INSTRUMENT.

Use extreme caution when working with bare conductors or bus bars.

WHEN WORKING WITH HIGH VOLTAGES, POST WARNING SIGNS AND
KEEP UNREQUIRED PERSONNEL SAFELY AWAY.

**CAUTION**

DO NOT APPLY ANY VOLTAGES OR CURRENTS TO THE TERMINALS OF THIS
INSTRUMENT IN EXCESS OF THE MAXIMUM LIMITS INDICATED ON
THE FRONT PANEL OR THE OPERATING GUIDE LABEL.

Contents

NOTICE	i
Chapter 1: Introduction	1
1.1 General Description	1
1.2 Circuit Description.....	2
1.2.1 Circuit Model.....	2
1.2.2 Theory of Operation.....	4
Chapter 2: Specifications	5
Specifications	5
Chapter 3: Installation	8
3.1 Initial Inspection	8
3.2 Installation.....	8
3.3 Repackaging for Shipment.....	8
3.4 Storage	8
Chapter 4: Operation	9
4.1 Initial Inspection and Setup	9
4.2 General Considerations for Use of a Voltage Divider.....	9
4.3 Power Limitations.....	9
4.4 Temperature and Power Effects	10
4.5 Loading Errors	10
4.6 Switch Conditioning	12
4.7 Operation and Controls.....	12
4.8 Use, Applications, and Calibration of the RV-722.....	13
Chapter 5: Decade Adjustment	14
5.1 Introduction to decade adjustment.....	14
5.2 Considerations and Overview of Adjustment Procedure of Resistors	14
5.2.1 Calibration Switch	15
5.2.2 Review of Measurement Options	15
5.3 Resistor Adjustment Procedure.....	16
5.3.1 Adjusting the first three decades	16
Chapter 6: Verification, Calibration, and Maintenance	18

Figures and Tables

<i>Figure 1-1: RV-722 Kelvin-Varley Voltage Divider.....</i>	<i>1</i>
<i>Figure 1-2: Digital Potentiometer Model for Kelvin-Varley Voltage Divider ..</i>	<i>2</i>
<i>Figure 1-3: Thévenin Equivalent Circuit of Kelvin-Varley Voltage Divider....</i>	<i>3</i>
<i>Figure 1-4: Output Resistance as a Function of Dial Setting</i>	<i>3</i>
<i>Figure 1-5: Schematic Diagram of RV-722 Kelvin-Varley Divider Circuit.....</i>	<i>4</i>
<i>Figure 2-1: Sample Label Attached to the Instrument.....</i>	<i>7</i>
<i>Figure 4-1: Power Distribution Effect of Interpolating Resistors</i>	<i>10</i>
<i>Figure 4-2: Thévenin Equivalent Circuit to Show Loading Effects.....</i>	<i>10</i>
<i>Figure 4-3: Output Resistance as a Function of Dial Setting</i>	<i>11</i>
<i>Figure 4-4: Nomogram for Output and Linearity Deviation.....</i>	<i>11</i>
<i>Figure 4-5: RV-722 Front Panel.....</i>	<i>12</i>
<i>Figure 5-1: Internal Rear Panel of RV-722</i>	<i>15</i>
<i>Table 5-1: RV-722 Resistance Adjustment Table.....</i>	<i>16</i>
<i>Figure 5-2: RV-722 PC Board Layout.....</i>	<i>17</i>

This page is intentionally left blank.

Chapter 1:

INTRODUCTION

1.1 General Description

The new RV-722 Rev. E (Figure 1-1) is equivalent in form and fit to the esi Model RV-722. It is updated with a number of improved features. The RV-722 is a calibration-grade voltage divider employing the Kelvin-Varley circuit. It is a highly accurate, stable, and linear primary ratio standard suitable for use in many applications requiring known voltage or current ratios. In particular, the RV-722 is especially appropriate for use in bridge circuits, providing two legs of a bridge with a well-known ratio.

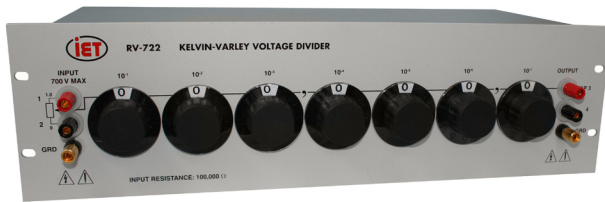


Figure 1-1: RV-722 Kelvin-Varley Voltage Divider

A Kelvin-Varley voltage divider is designed for use in null-balance circuits or as a voltage source for high-impedance circuits. *See References.* It **cannot** be used as a simple variable resistor because of the additional resistance in series with the tap; *see Figure 1-2.* The resistance ratios between the taps of a Kelvin-Varley divider are not linearly related to the voltage ratios.

Although many new higher-performance DMM's (Digital Multimeters) claim to have a voltage divider capability, that capability is limited to one or two decades, and the Kelvin-Varley circuit remains the choice for all precision divider applications to a fraction of a ppm.

The RV-722 has a resolution of 0.1 ppm and an absolute linearity of 0.5 ppm. Long-term linearity is 1.0 ppm, but the unit may be brought into initial specifications with internal adjustments; see Chapter 5. Temperature coefficient of linearity is 0.2 ppm/°C, and power coefficient of linearity is 1 ppm/W.

The RV-722 incorporates a number of advanced features for convenience and high performance. These include:

- internal readjustment capability
- state-of-the-art very low temperature coefficient hermetically sealed resistors
- Kel-F mounted low-emf tellurium copper binding posts
- a convenient operating guide attached to the unit
- Technical references available on IET's website

The RV-722 features an internal **OPERATE-CALIBRATE** switch to allow built-in trimming so that the unit may be adjusted with conventional instruments whenever required to bring it to initial performance specifications.

The RV-722 employs sealed precision resistors which have been aged; temperature and power-cycled to maximize long-term stability; and matched to minimize temperature and power coefficient effects. The most significant decades are matched and hermetically sealed to minimize temperature-coefficient effects.

The switches are made of solid silver-alloy contacts for long life, minimum contact resistance, and no tarnishing. The three most significant decades use sealed switches. The switches have multiple-wiper contacts to provide stable, low contact resistance.

High-quality, gold-plated, tellurium-copper binding posts minimize the thermal-emf effects which would artificially reflect a change in dc resistance measurements. They are mounted to the case on special Kel-F washers to assure low leakage. All other conductors within the instrument, as well as the solder employed, contain no metals or junctions that could contribute to thermal emf problems.

The front panel is clearly labeled, showing step size for each decade. Maximum voltage and current limits are indicated as well. The unit may be mounted in a standard 19-inch rack.

Applications include linearity determination, the measurement of voltage and resistance, and the calibration of other dividers, potentiometers or similar devices involving both voltage and current.

1.2 Circuit Description

1.2.1 Circuit Model

A Kelvin-Varley voltage divider may be thought of as being equivalent to a digital potentiometer, except that it has an additional - but variable - resistance in series with the wiper arm. Such a circuit model of the RV-722 may be seen in Figure 1-2. In the case of the RV-722, the resistance between the input terminals 1 and LOW is 100 k Ω .

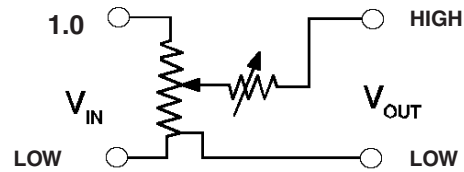


Figure 1-2: Digital Potentiometer Model for Kelvin-Varley Voltage Divider

An actual digital potentiometer uses decades of resistor steps, each decreasing by a factor of ten. The problem with such a digital potentiometer, however, is that its resolution becomes limited by the ever-smaller resistor value. They become difficult to implement as the contact resistance of switches and connections become significant. A Kelvin-Varley circuit overcomes this problem with its special design, described later. Another way to model the RV-722 is with the Thévenin equivalent circuit shown in Figure 1-3, where S is the dial setting. Note that if the output is being fed into a very high impedance, then the output impedance R_o , may be ignored. In general, however, the effect of load impedance, R_L must be taken into consideration, as will be discussed below. The approximate value of R_o is shown in Figure 1-4. It may be seen that the output impedance is maximum at about the dial setting of 0.5 and drops to zero at both ends (1.0 and 0.) It is the value of R_o which will influence the effect of loading.

Note, however, that in general bridge applications, nominally zero current flows out of the divider as the bridge comes into balance, and therefore the divider effectively “sees” an infinite impedance, and the effect due to R_o may be safely ignored.

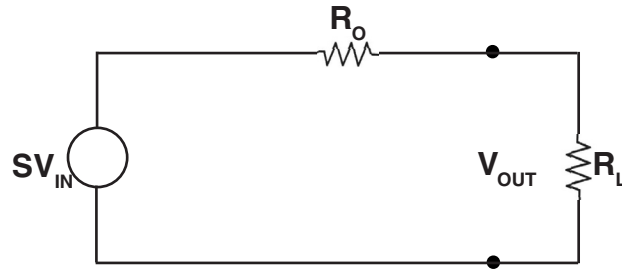


Figure 1-3: Thévenin Equivalent Circuit of Kelvin-Varley Voltage Divider

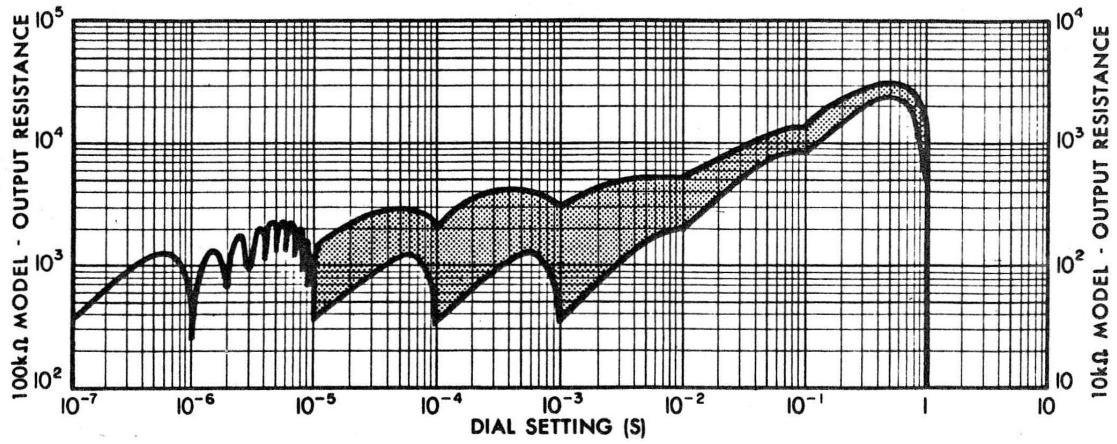


Figure 1-4: Output Resistance as a Function of Dial Setting

1.2.2 Theory of Operation

The actual circuit diagram of the RV-722 is shown in Figure 1-5. This circuit is capable of dividing the input into 10^7 parts, i.e. 0.1 ppm. It consists of seven decades, each of which divides its input voltage into 10 equal parts.

The implementation of this division may be seen as follows: The input voltage across each decade is divided by 10 equal resistances. Placing the resistance of the succeeding interpolating decade in parallel with a portion of the upstream decade reduces the effective resistance of that portion. In particular, examine the figure and note that first decade has 11 (not 10) resistors. The divider wipers from the second decade encompass two resistors totaling $20\text{ k}\Omega$. This $20\text{ k}\Omega$ is shunted by $20\text{ k}\Omega$, the effective total resistance of the interpolating second decade (it is convenient to think of the second decade, as with all other decades, as 10 resistors) of $10 \times 2\text{ k}\Omega$, or $20\text{ k}\Omega$ with all the shunting in parallel with it, resulting in a total effective resistance of $10\text{ k}\Omega$ for that step.

The 11 steps become equivalent to 10 steps of $10\text{ k}\Omega$ each, and in this way all the steps are kept equal. Each step of the second decade is $2\text{ k}\Omega$. The $4\text{ k}\Omega$ of that decade, spanned by the switch contacts, are shunted by the $4\text{ k}\Omega$ effective resistance of the third decade. Similarly $800\ \Omega$ of the third decade are shunted by the $800\ \Omega$ total resistance of the fourth decade.

Note that this pattern reduces the resistor value until an final value of $400\ \Omega$ is reached and repeated. This allows the use of a resistance high enough to avoid contact resistance problems.

Note that the last decade uses only one switch wiper and can therefore span positions 0-10. With all significant decades set to 9, and the last one set to 10, the output is 1.0 or equal to the input.

At the low or zero end, a small series resistance is added between the **OUTPUT LOW** terminal, the lower end of the divider string, and the **INPUT LOW** terminal to compensate for contact and wiring resistance, thus bringing the voltage at the **OUTPUT LOW** terminal equal to the voltage at the **OUTPUT HIGH** terminal for all switches set to 0. This provides improved performance for low voltage outputs.

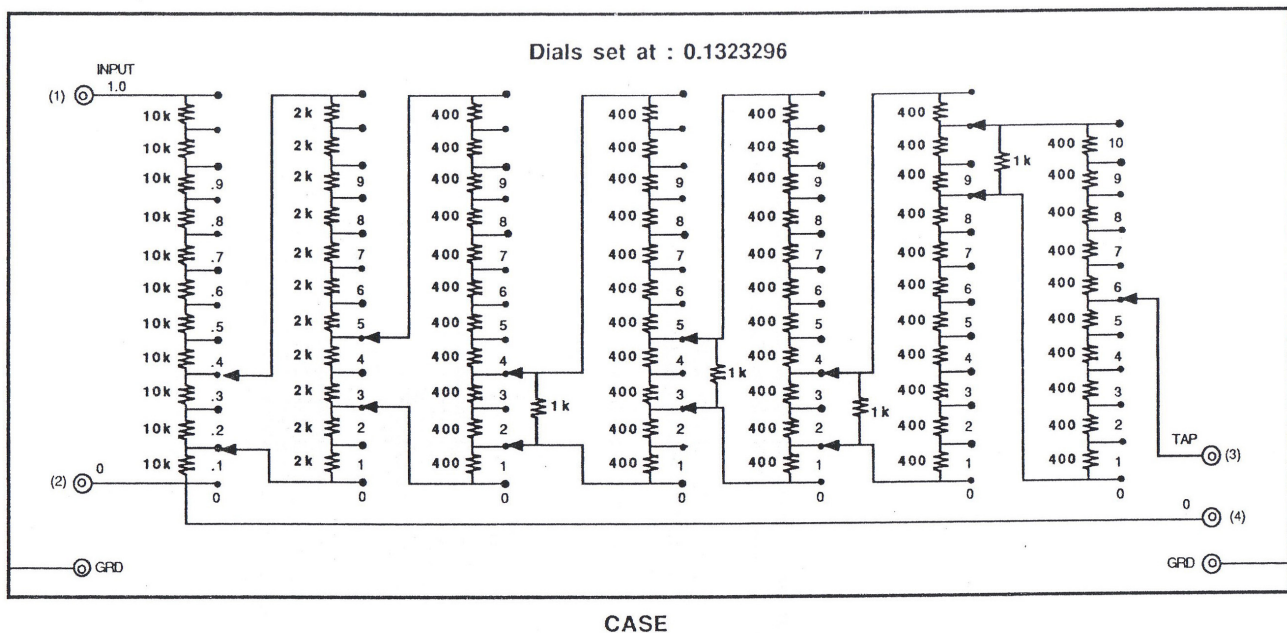


Figure 1-5: Schematic Diagram of RV-722 Kelvin-Varley Divider Circuit

Chapter 2: SPECIFICATIONS

For convenience to the user, the pertinent specifications are given in an **OPERATING GUIDE**, shown in Figure 2-1, affixed to the case of the instrument.

SPECIFICATIONS

Definitions:

Linearity is the expression of the accuracy of the divider in proportional parts of input. Two types of linearity are frequently specified: absolute and terminal.

Absolute linearity is the accuracy relative to the output at the end-scale settings of 0 and 1.0. That is, the divider is defined as correct at these settings.

Terminal Linearity is the accuracy relative to the input at the divider end terminals.

The RV-722 has separate input and output common terminals, so that the output common may be compensated for small voltage drops in leads and switches, making the output zero when the setting is zero.

Overview:

Two separate terminal-linearity specifications are given: **Absolute** - relative to the output common terminal, and **Terminal Linearity** - relative to the input common terminal.

Mid-scale linearity and **coefficient ratings** apply for settings between 0.1 and 0.9. The ratings will typically improve below 0.1 in proportion to the square root of the setting, and above 0.9 in proportion to the square root of 1 minus the setting.

Absolute Linearity:

At 23°C, at low power; defined relative to zero and full scale outputs, at the output terminals. Quantitatively it is $[V_{out}/V_{in}] - S$, where S is the dial setting, that is the divider is defined as correct at these end settings. See definition above.

Initial: ±0.5 ppm at midscale, improving to zero at end settings

Long-Term: ±1 ppm at midscale, improving to zero at end settings

Certificate-Corrected: ±0.2 ppm at midscale, improving to zero at end settings

Terminal Linearity (Relative to Input Terminals):

The accuracy at the divider end terminals, relative to the input. See definition above. Same as absolute linearity except for <0.05 ppm end voltage drop.

Temperature Coefficient of Linearity:

±0.2 ppm/oC at midscale, improving to zero at end settings.

Power Coefficient of Linearity:

±1 ppm/W at midscale, improving to zero at end settings.

Switch Contact and Wiring Resistance Variations:

Initial: ±0.004 ppm

Long-Term: ±0.008 ppm

Calibration conditions:

23°C, low input power.

Number of Decades:

Seven

Resolution:

0.1 ppm

Input Resistance:

100 k Ω \pm 50 ppm

Maximum Output Power:

2.5 W continuous, 5 W intermittent

Maximum Input Voltage:

700 V_{rms}.

Breakdown Voltage:

1000 V peak to case.

Terminals:

High-quality low-thermal-emf, gold-plated, tellurium-copper binding posts; standard 0.75" spacing; additional binding posts are connected to the case for shielding. Terminals are insulated from the case by non-moisture-absorbing Kel-F spacers.

Dimensions:

48.25 cm W x 13.3 cm H 21.3 cm D
(19.0" x 5.25" x 8.4")

Weight:

5.6 kg (12.5 lb)

DESCRIPTION: Decade voltage divider employing the Kelvin-Varley circuit, providing known voltage and current ratios for calibration, bridge inaccuracy determination, and other applications. Note: A Kelvin-Varley divider is not the exact equivalent of a potentiometer, but has an additional variable resistance in series with the wiper, ranging between zero and about 100 k Ω .

RV 722 KELVIN-VARLEY VOLTAGE DIVIDER OPERATING GUIDE
CONSULT INSTRUCTION MANUAL FOR PROPER INSTRUMENT OPERATION

TERMINAL LINEARITY: (Relative to Input Terminals), same as absolute linearity except for end voltage drops not exceeding 0.05 ppm.

RESOLUTION: 0.1 ppm in 7 decades.

TEMPERATURE COEFFICIENT OF LINEARITY: ± 0.2 ppm of Input/ $^{\circ}$ C, at mid-scale improving to zero at end settings.

POWER COEFFICIENT OF LINEARITY: ± 1 ppm of Input/W at mid-scale, improving to zero at end settings.

TEST CONDITIONS: 23 $^{\circ}$ C at low power.

MAXIMUM INPUT VOLTAGE: 700 Vrms.

BREAKDOWN VOLTAGE: 1000 V, peak to case.

EFFECT OF CONTACT AND WIRING RESISTANCE VARIATION ON LINEARITY: ± 0.04 ppm initial, ± 0.08 long term.

INPUT RESISTANCE: 100 k Ω ± 50 ppm.

MAXIMUM INPUT POWER: 2.5 W continuous, 5 W intermittent.

END ERRORS: Zero error at **OUTPUT LOW** terminal < ± 0.002 ppm of input; Zero error at **INPUT LOW** terminal < ± 0.05 ppm of input; Full scale error at **OUTPUT HIGH** terminal < ± 0.05 ppm of input; typical values.

GND TERMINALS: Connected to case.

SWITCH OPERATION: Whenever the unit has been idle, turn each switch 7-10 times both ways before using. This switch "break-in" procedure is standard metrology practice required for best accuracy to remove any silver oxide film on the contact surfaces, typically < 1 m Ω .

ABSOLUTE LINEARITY: Linearity deviation, the error between the actual output voltage (V_{out}) and the ideal output voltage for a particular setting (S);
Linearity Deviation = $(V_{out} / V_{in}) - S$
Initial: ± 0.5 ppm at mid-scale, improving to zero at end settings.
Long-Term: ± 1 ppm at mid-scale, improving to zero at end settings.
Accuracy may be restored to initial specifications with internal adjustments.

MODEL: RV-722 **SN:** 621001

WARNING

Observe all safety rules when working with high voltages or line voltages. Connect the (GND) terminals to earth ground in order to maintain the case at a safe voltage. Whenever hazardous voltages (>45 V) are used, take all measures to avoid accidental contact with any live components:
a) Use maximum insulation and minimize the use of bare conductors, b) remove power when adjusting switches, c) post warning signs and keep personnel safely away.

IET LABS, INC.
formerly manufactured by
esi/Tegam

• 534 Main Street, Westbury, NY 11590 • (516) 334-5959 • (800) 899-8438 • Fax (516) 334-5988

www.ietlabs.com

K1000JUL14R112284643776-13.0

Figure 2-1: Sample Label Attached to the Instrument

Chapter 3:

INSTALLATION

3.1 Initial Inspection

IET instruments receive a careful mechanical and electrical inspection before shipment. Upon receipt, verify that the contents are intact and as ordered. The instrument should then be given a visual and operational inspection.

If any shipping damage is found, contact the carrier and IET Labs. If any operational problems are encountered, contact IET Labs and refer to the warranty at the beginning of this manual.

Save all original packing material for convenience in case shipping of the instrument should become necessary.

3.2 Installation

For a rack-mounted model, installation in a 19 inch rack may be made using the slots in the rack mounting ears. A mounting location that does not expose the unit to excessive heat or temperature variations is recommended. It may be necessary to remove the stick-on feet on the bottom of the unit if they interfere mechanically with placement.

For bench models, no installation as such is required, because this instrument series is not powered. Since the RV-722 is a high-accuracy instrument, it is recommended that a bench space be provided that would not expose it to abuse and keep it protected from temperature extremes and contaminants.

3.3 Repackaging for Shipment

If the instrument is to be returned to IET Labs, contact the Service Department at the number or address, shown on the front cover of this manual, to obtain a “Returned Material Authorization” (RMA) number and any special shipping instructions or assistance. Proceed as follows:

1. Attach a tag to the instrument identifying the owner and indicate the service or repair to be accomplished. Include the model number, the full serial number of the instrument, the RMA number, and shipping address.
2. Wrap the instrument in heavy paper or plastic.
3. Protect the front panel and any other protrusions with cardboard or foam padding.
4. Place instrument in original container or equally substantial heavy carton.
5. Use at least 3 inches of packing material around all sides of instrument.
6. Seal box with strong tape or strapping.
7. Mark shipping container “DELICATE INSTRUMENT,” “FRAGILE,” etc.

3.4 Storage

If this instrument is to be stored for a lengthy period of time, it should be sealed in plastic and stored in a dry location. It should not be subjected to temperature extremes. Extended exposure to such temperatures can result in an irreversible change in resistance, and require recalibration.

Chapter 4: OPERATION

4.1 Initial Inspection and Setup

This instrument was carefully inspected before shipment. It should be in proper electrical and mechanical order upon receipt.

An **OPERATING GUIDE**, like the typical one shown in Figure 2-1, is attached to the case of the instrument to provide ready reference to specifications.

4.2 General Considerations for Use of a Voltage Divider

A Kelvin-Varley voltage divider is designed for use in a null-balance circuits or a voltage source for high impedance circuits; See appendix. It cannot be used as simple variable resistor because of the additional resistance in series with the tap; see Figure 1-2. The resistance ratios between the taps of a Kelvin-Varley divider are not linearly related to the voltage ratios.

Although many new high-performance DMM's (Digital Multimeters) claim to have a divider capability, that capability is limited to one or two decades, and a Kelvin-Varley voltage divider such as the RV-722 remains the choice for all precision divider applications requiring a fraction of a ppm.

4.3 Power Limitations



To avoid damaging the RV-722, it is necessary to take certain precautions. The input voltage limitation of 700 V will normally protect the instrument from excessive power dissipation. However, with certain dial settings and connections, it is possible to draw excessive current and permanently damage the instrument if the input voltage is maintained. For this reason, the source should be limited to 1 W if possible.

This can be done by inserting a resistor with a value $R=E^2/4$ in series with the supply voltage E. Another method of protecting the divider is to fuse the output with a 10 mA fuse.

4.4 Temperature and Power Effects

Figure 4-1 illustrates the division of current and power in the RV-722 resistors. The temperature rise in each resistor is almost directly proportional to the power applied to it.

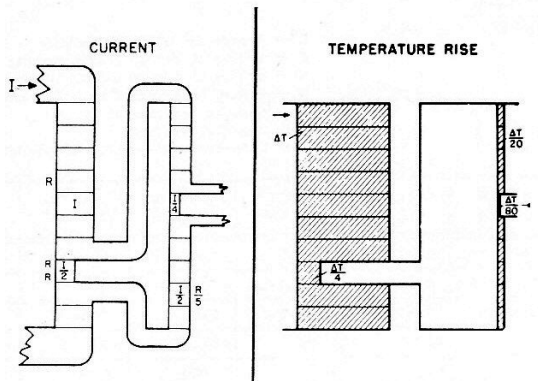


Figure 4-1: Power Distribution Effect of Interpolating Resistors

Uneven power distribution results from the shunting of two of the eleven resistors in each decade by the next decade (refer to Figure 1-5). As a result of this uneven power distribution, the shunted resistors do not get as hot as the rest. Therefore, if the divider is to be run at fairly high power and the first decade is switched, a short time should be allowed for the redistribution of heat in the resistors.

4.5 Loading Errors

As may be seen from Figure 4-2, the output voltage of an unloaded Kelvin-Varley divider is given by: $V_{OUT} = SV_{IN} + DEV$ where **DEV** is the fractional linearity deviation. When a load is applied, the output becomes: $V_{OUT} = SV_{IN} + DEV - R_o/R_L$ where R_o is the output resistance which may be determined by shorting the input leads and measuring across the output leads, or can be approximated by using Figure 1-4. R_o ranges from zero to about 66 k Ω . R_L is the load resistance applied at the output.

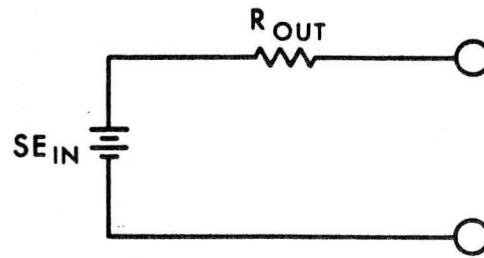


Figure 4-2: Thévenin Equivalent Circuit of a Kelvin-Varley Voltage Divider to Show Loading Effects

It may be seen that it is the relative size of the term R_o/R_L to the linearity deviation that determines the Importance of the loading error. In particular, for the RV-722, R_L must be greater than 1 T Ω , i.e. 10^{12} , for the loading effect to be <.03 ppm for the maximum R_o . It will be smaller for lower output resistances at other settings.

A bridge circuit under balanced conditions will effectively draw no current from the RV-722 and approach a true open circuit.

When a load is placed across the output of the RV-722, the output voltage will change. This change in output voltage may or may not have to be considered in the measurement being made, depending on the degree of accuracy desired. With high impedance loads the effect of the load may be less than the effect of the linearity deviation. In this case the change in output voltage due to output loading can be neglected.

The RV-722 can be represented by an equivalent generator and output resistor in series, as shown in Figure 4-2. With this equivalent circuit and a known load resistance, the effect on output voltage can be easily analyzed. Variations in output voltage can be expressed as LINEARITY DEVIATION (deviation from nominal output in proportional parts of the input), or as OUTPUT DEVIATION (the deviation from nominal output in proportional parts of the output).

Figure 4-3 is a plot of the output resistance of the RV-722 as a function of its dial setting. The resistance values are symmetrical about a setting of .500,000,0. For example, the output resistance at a setting of .985,000,0 will be the same as that for a setting of .015,000,0. The resistance corresponding to .255,555,5 can be found in Figure 4-4. With the Kelvin-Varley circuit the maximum output resistance occurs at settings of .455,555,5 and .544,444,4. The output resistance measurements are made by shorting the input terminals together and measuring the resistance across the output terminals.

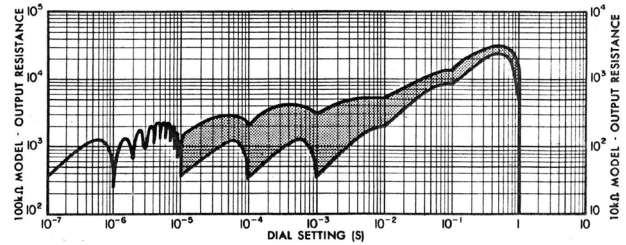


Figure 4-3: Output Resistance as a Function of Dial Setting

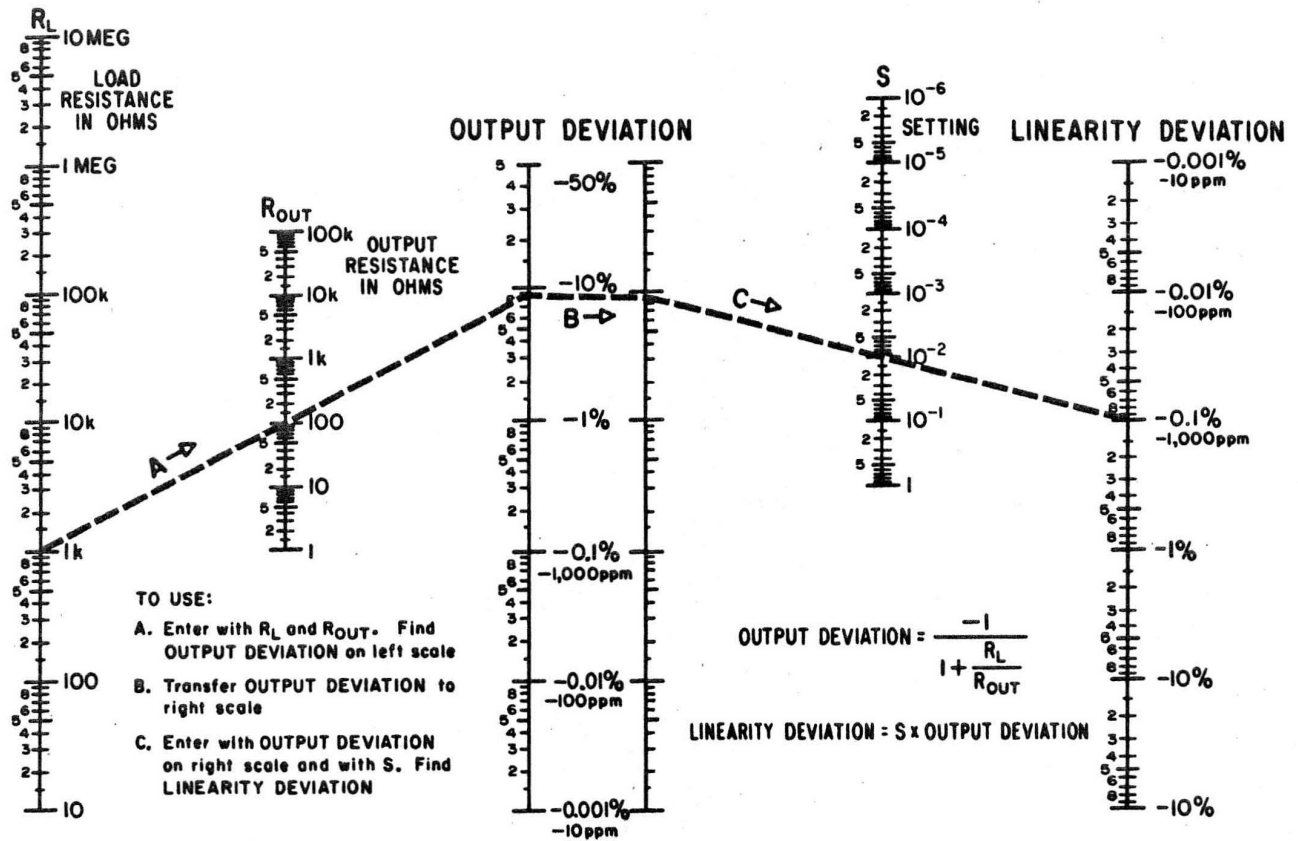


Figure 4-4: Nomogram for Output Deviation and Linearity Deviation Due to Output Loading

4.6 Switch Conditioning

The main switch wipers employed in this unit are self-cleaning, and are constructed of solid silver alloy with solid silver alloy contacts. Whenever left idle, all the wipers and contacts should still be conditioned or “re-broken-in” to remove any oxide that develops over time. This is standard metrology practice when high accuracy is required. This effect is of the order of less than $1\text{ m}\Omega$, so it may be ignored whenever measurements of that magnitude are not important.

To perform this “breaking in,” simply rotate each switch seven to ten times in each direction.

4.7 Operation and Controls


WARNING

Observe all safety precautions if high voltages are used.

Figure 4-5 shows the front panel and the various controls and connection terminals of the RV-722 divider.

The input voltage is connected to the **1.0 INPUT**. Secure connections should be made to the terminals using spade lugs, banana plugs, or bare wire. Caution

should be exercised since most often such connectors are usually made of brass, which can add thermal emf. Copper or copper alloy connections should be used, or bare wire which is tinned copper may be employed. Similar connections are made to the **OUTPUT** terminals.


CAUTION

Do not handle Kel-F washers with bare hands to maintain low leakage.

Implement any current limiting protection as described in the power considerations discussion of section 4.3.

The dials may be set and read directly on the front panel. Some decades have blank positions to be used only in the calibration mode. The least significant decade has a “10” setting which can be used to provide an output of 1.0, i.e. 100% of the input.

End errors should be considered in any application. Either the specified values should be used or the end errors may be measured as described in the Verification, Calibration and Maintenance section below.

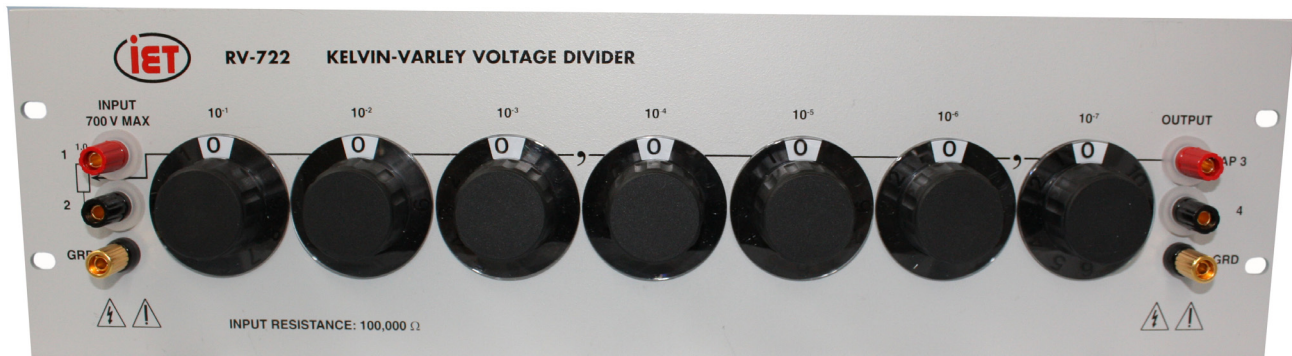


Figure 4-5: RV-722 Front Panel

4.8 Use, Applications, and Calibration of the RV-722

There is a broad spectrum of applications for a Kelvin-Varley divider, such as calibrating other voltage dividers, measuring unknown voltages, and measuring unknown resistances.

The best source of information on the use, applications and calibration of the RV-722 are found in the following references:

- *Calibration of a Kelvin-Varley Standard Divider* -- M. L. Morgan and J. C. Riley
- *Kelvin-Varley Resistive Voltage Divider* -- esi Instruction Manual
- *DC and Low Frequency AC Ratio Measurements* -- Engineering Bulletin No. 29
- *Calibration of a Kelvin Varley Voltage Divider* -- Engineering Bulletin No. 24
- *A Resistance Bridge Made From a Voltage Divider* -- Engineering Bulletin No. 38

All these references are available on IET's website.

Consult IET Labs for assistance and additional information.

Chapter 5:

DECADE ADJUSTMENT

This chapter describes an additional option of the IET RV-722 -- to adjust the resistors in order to bring them into initial specifications. This option was not available in the esi RV-722. Therefore, this process is OPTIONAL.

5.1 Introduction to decade adjustment

It is important to make a distinction between **calibration** and **adjustment**. Calibration is the “official” - sometimes “accredited” - measurement of a value or a parameter; as commonly used, “calibration” is incorrectly applied to the setting of a parameter, e.g with a potentiometer. Adjustment is the proper term for “setting.” This chapter will deal with the *adjustments required* to bring the RV-722 into specifications

As may be seen from the schematic of a Kelvin-Varley voltage divider shown in Figure 1-5, the linearity depends primarily on the equivalence of the resistance steps. Other sources of error are leakage and switch contact resistance stability.

The user has the ability to measure the leakage of the unit and take action if required. The switch contact resistance is known to remain high for decades. The new IET RV-722 allows user adjustment of the resistance values of the first three decades. Adjustable trimmers in the first three decades allow setting the various resistances with respect to each other or to some resistance standard. This can compensate for the effects of aging and temperature, and makes it possible to adjust the unit to initial specifications whenever desired.

If an accredited calibration is required, the unit may be returned to IET labs.

5.2 Considerations and Overview of Adjustment Procedure of Resistors

The goal of this procedure is to adjust the value of the resistors in the first three decades to be:

- matched to each other within each decade
- linear with each other from decade to decade
- accurate to their absolute value

Clearly the third requirement, if met completely, would be sufficient, but it is important to understand that the matching of the individual values becomes important since the true absolute value cannot be practically achieved.

5.2.1 Calibration Switch

In order to be able to calibrate the resistors individually, they must be electrically independent from other decades. This is accomplished by the use of the internal **CALIBRATE-OPERATE** switch. This switch, inside the unit, is normally set to the **OPERATE** position.

For adjustment of the resistors, set the switch to the **CALIBRATE** position which electrically separates the resistors of the first three decades. Access to each resistor is now possible on the Adjustment PC board inside the unit.

5.2.2 Review of Measurement Options

As discussed above, what is required is the capability to measure and adjust and match the resistances of $10,000\ \Omega$ of the first decade steps at:

- Accuracy: 4 ppm
- Resolution: 0.1 ppm
- Repeatability: 2 ppm
- Matching: 1 ppm

This is the requirement of the first decade, which is the most exacting. The requirements for the second and third decades are less exacting.

The assumption here is that the user has the capability and the equipment required to perform this measurement. Therefore, it is up to the user to make these adjustments and measurements in a proper metrological fashion. IET Labs is available for assistance.

There are a number of instrumentation options for accomplishing this. These include , but are not limited to:

- High-performance DMM's such as Fluke Model 8508A
This may be used in the ratio mode with a resistance standard attached to the rear of the meter, or in the direct measurement mode.
- Resistance bridges such as the MI 6000 Series, the Guildline 6622A Series, The IET (formerly esi) Model 242, along with resistance standards
- A bridge measurement system such as described in the performance verification of this manual used in a resistance measurement mode along with an IET Labs (formerly esi) Transfer Standard Series 1010.

The significant advantage of the procedure here is that it is self-consistent in the sense that the first resistor is measured, and the second and all subsequent resistors are set to match the first. This produces the required linearity performance without having to attempt to set all the resistors to an absolute “perfect” value.

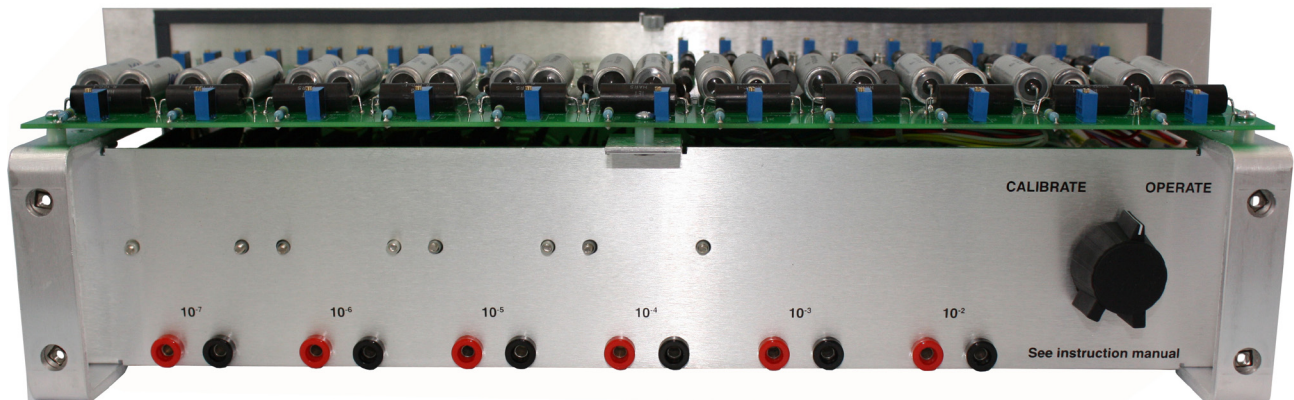


Figure 5-1: Internal Rear Panel of RV-722 Showing Calibrate-Operate Switch

5.3 Resistor Adjustment Procedure

Before starting the adjustment procedure, allow the RV-722 unit to stabilize at 23°C for at least 24 hours.

To set up the unit for adjustments, do the following:

1. Review section 5.2.2.
2. Set up the necessary measurement equipment.
3. Unscrew the screws on the top, rear and bottom of the unit and remove the housing.
4. Set the **CALIBRATE-OPERATE** switch to **CALIBRATE**.

5.3.1 Adjusting the first three decades

There are 11 resistors in each of the first three decades. To measure and adjust these resistors, refer to Table 5-1 and Figure 5-2 and do the following:

1. Measure the value of each resistor by connecting to the points indicated in the **Measure Across** column.
2. As necessary, adjust potentiometers identified in the **Adjust** column to values specified in the **Target** column.
3. After completing the adjustments, remeasure to confirm stable settings.
4. Once all resistors are within specifications, set the **CALIBRATE-OPERATE** switch to **OPERATE**.
5. Slide the housing back onto the unit and screw all the screws back into their original positions.

	Setting Requirements	Measure across	Adjust	Target
Decade 10 ⁻¹	Accuracy: 4 ppm Resolution: 0.1 ppm Repeatability: 2 ppm Matching: 1 ppm	J0A-J1A	R0A	10 kΩ less 6.7 ppm
		J1A-J2A through J10A-J11A	R1A through R10A	10 kΩ less 6 ppm
J0B-J1B through J10B-J11B		R1B through R10B	2 kΩ	
J0C-J1C through J10C-J11C		R1C through R10C	400 Ω - 60 mΩ (399.94 Ω)	
Decade 10 ⁻²				
Decade 10 ⁻³				

Table 5-1: RV-722 Resistance Adjustment Table

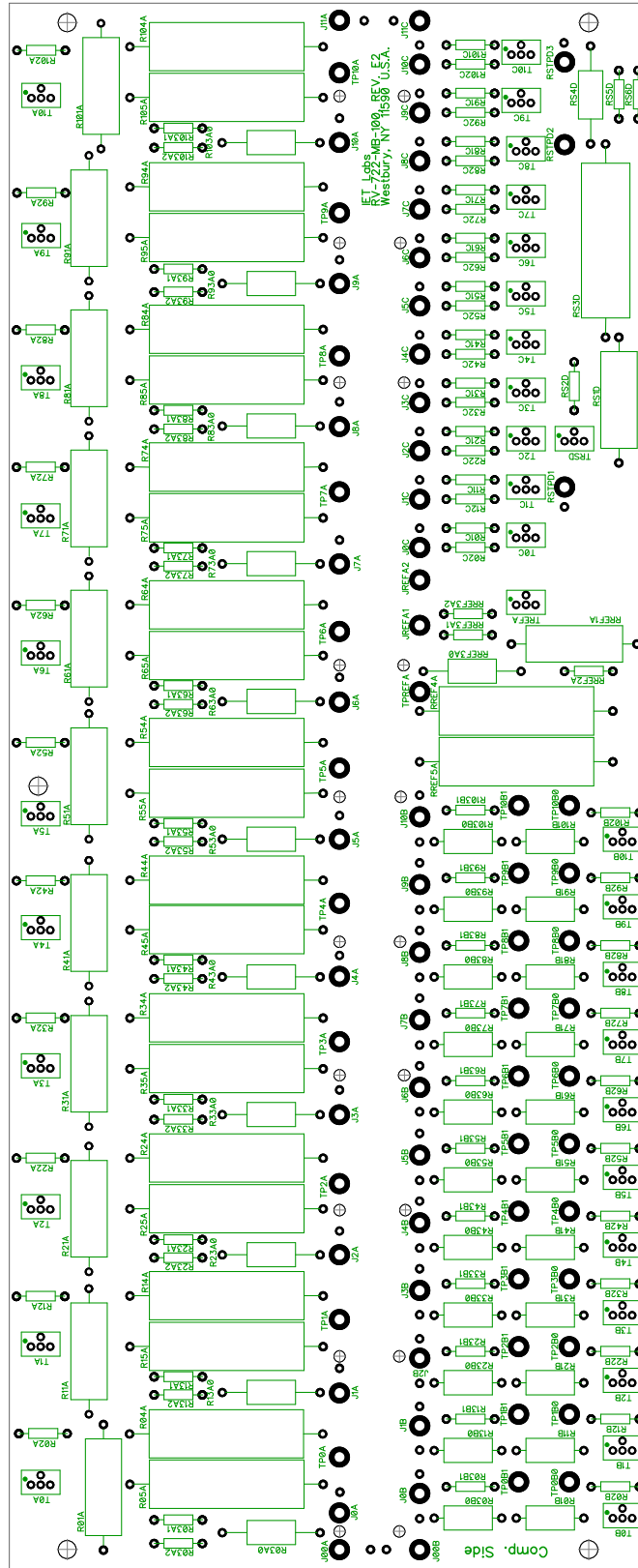


Figure 5-2: RV-722 PC Board Layout

Chapter 6:

VERIFICATION, CALIBRATION, AND MAINTENANCE

The RV-722 should be calibrated per the Navair 17-20AE-39 Technical Procedure and Calibration Manual.

The RV-722 can be cleaned with denatured alcohol and a soft cloth. There is no other maintenance required.

