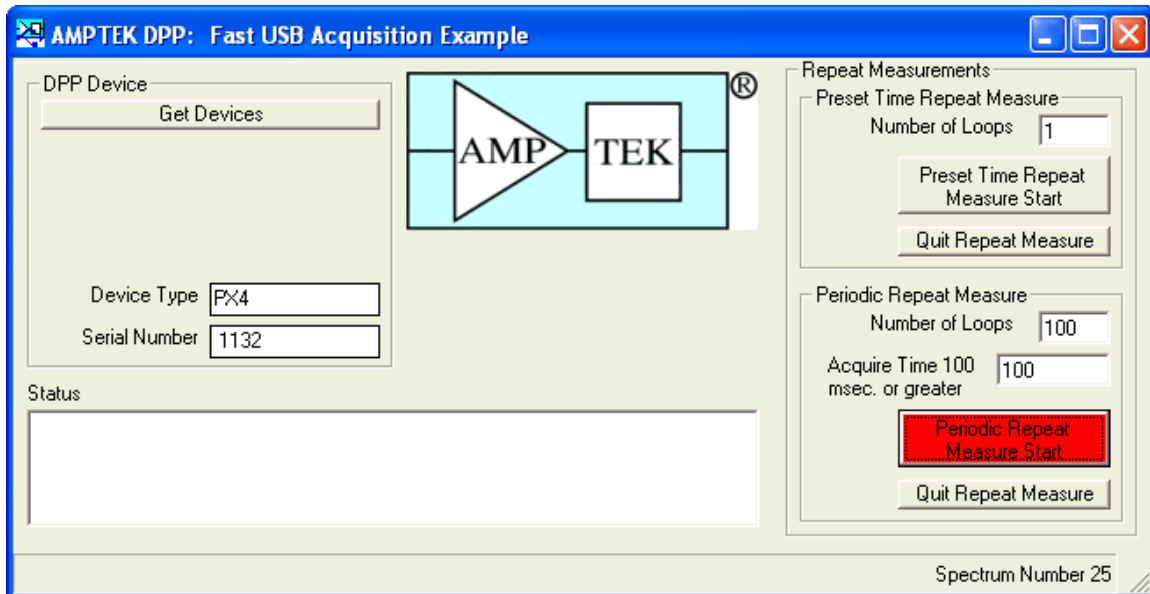


FastUSB - Fast USB Acquisition Example



The **FastUSB - Fast USB Acquisition Example** demonstrates acquiring data at faster rates than the DppApi DLL or ADMCA application. Two methods are used, **Preset Time Repeat Measure** and **Periodic Repeat Measure**. A summary of the data is in CSV format.

Preset Time Repeat Measure Method

The **Preset Time Repeat Measure** method uses a preset time to control the acquisition time and a multimedia timer to generate a timestamp. The data buffer is cleared after each acquisition.

Periodic Repeat Measure Method

The **Periodic Repeat Measure** method uses a multimedia timer to control the acquisition time and a multimedia timer to generate a timestamp. Data is saved at specified intervals and the data is not cleared after each data save.

Before Selecting a Device

1. Verify the device is configured.
2. Verify the device can acquire data.

Selecting a DPP Device

1. Press Get Devices button, a list of available devices will appear.
2. Select a device from the list.

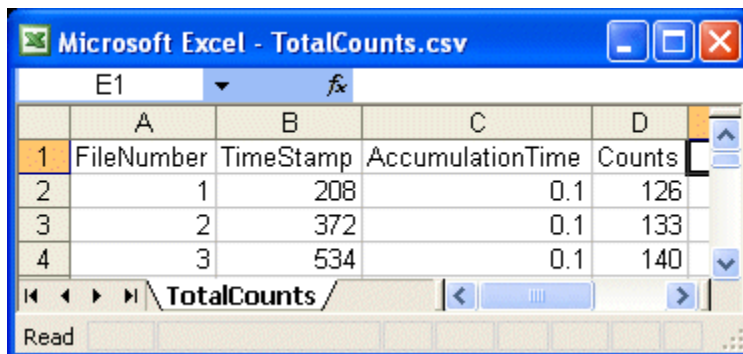
Preset Time Repeat Measure

1. NOTE: **Preset Time Repeat Measure** requires the preset time to be set.
2. Enter the number of acquisitions required in the **Number of Loops** textbox.
3. Press the **Preset Time Repeat Measure Start** button.
4. The acquired data will be saved to the application directory.

Periodic Repeat Measure

1. NOTE: **Periodic Repeat Measure** requires the preset time **NOT BE SET**.
2. Enter the number of acquisitions required in the **Number of Loops** textbox.
3. Enter the number of milliseconds per acquisition in the **Acquire Time** textbox.
4. Press the **Periodic Repeat Measure Start** button.
5. The The acquired data will be saved to the application directory.

CSV Format Repeat Measure Summary Example

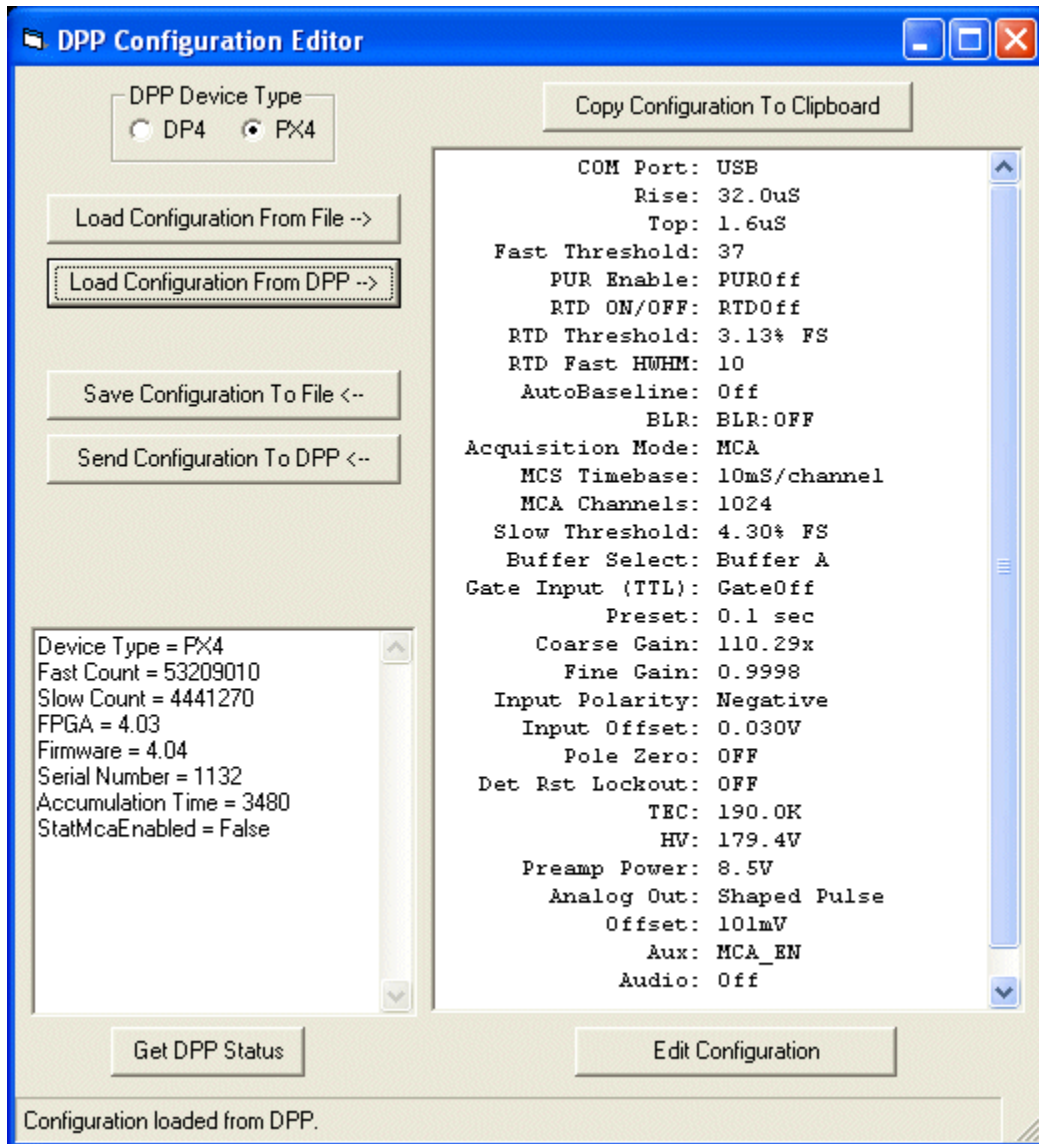


	A	B	C	D
1	FileNumber	TimeStamp	AccumulationTime	Counts
2	1	208	0.1	126
3	2	372	0.1	133
4	3	534	0.1	140

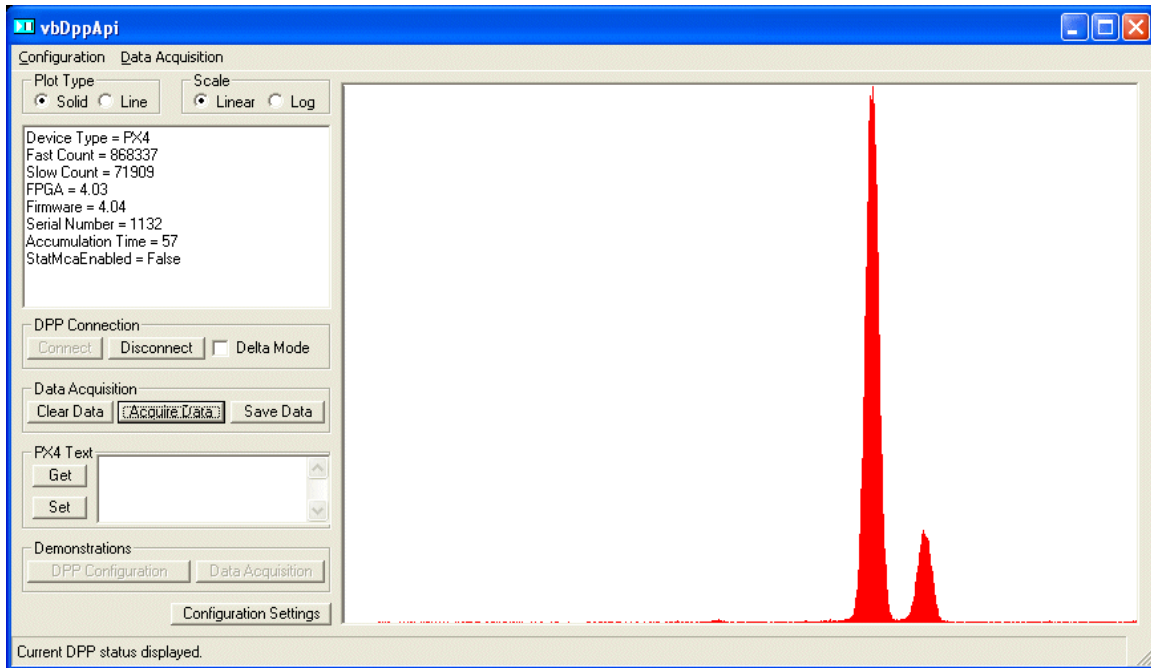
Other Support Applications and Files Included

CfgEdit.exe – DP4/PX4 Configuration Editor

The DP4/PX4 Configuration Editor can set and clear the **Preset Time** as well as most other settings.



vbDppApi.exe – VB DppApi Sample Application



DppApi.dll - DppApi Version 1.0.1.4 with High Speed Preset Time

usbdrv.dll – APAUSB Driver

BackupDir.exe - Data Backup Utility

BackupDir.ini – Data Backup Utility Setup File

Sample (default) backup settings.

The screenshot shows a Notepad window titled "BackupDir.ini - Notepad". The menu bar includes "File", "Edit", "Format", "View", and "Help". The text content of the file is as follows:

```
[Settings]
DirNameRoot=
TimeFormat=YYYYMMDD_HHMM
BackupFiles=*.mca;*.csv
RemoveOldFiles=true
```

The status bar at the bottom indicates "Ln 1, Col 1".