

“Over-reliance on one’s own experience  
allows one to make  
the same mistakes  
with greater confidence.”

*~Anonymous*

# To Board or Not to Board?

spinal immobilization for the 21<sup>st</sup> century

*Chetan U. Kharod, MD, MPH*

*Lt Col, USAF, MC, SFS*

*Military EMS & Disaster Medicine Fellow*

*San Antonio Uniformed Services Health Education Consortium*

# Objectives

- ⦿ Describe current spinal immobilization practices
- ⦿ Describe the history of spinal immobilization
- ⦿ Express the basics of NAEMSP's spinal immobilization policy statement
- ⦿ Explain the value of selective spinal immobilization
- ⦿ Discuss special considerations in spinal immobilization

# Motorcycle Accident

- ⊙ 35 year old female motorcycle rider
- ⊙ Multi-vehicle MVC in the rain, highway speed
- ⊙ Motorcycle clipped by SUV and careened into highway divider
- ⊙ Left elbow & shoulder, upper back pain
- ⊙ Helmet cracked and pt. semiconscious

Should the patient be immobilized?  
Why or Why not?

# Friday Night Lights

- ⦿ 16 year old male football player
- ⦿ Made a spear tackle during the game and remains down
- ⦿ Assessment reveals mild posterior neck tenderness

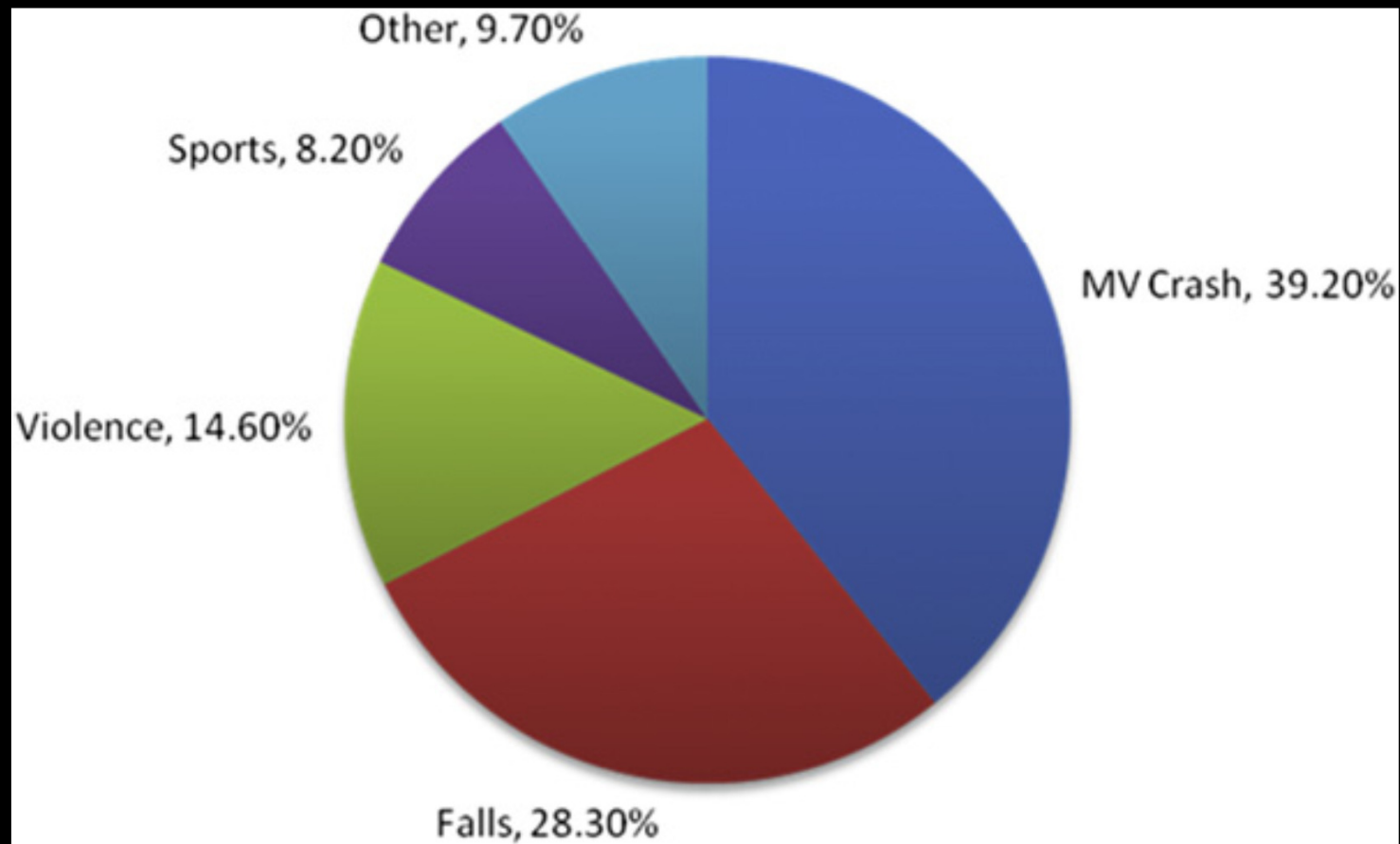
Should the patient be immobilized?  
Why or Why not?

# Fall from atop a helicopter

- ◎ 26 y/o WM slipped and fell 20+ ft.  
off a UH-60 Blackhawk helicopter
- ◎ Able to stand at scene without focal deficits
- ◎ Abrasions and lacerations, holding left  
shoulder, rubbing the back of his neck
- ◎ Bagram AB, Afghanistan

Immobilize?

# Causes of Spinal Cord Injury (SCI) 2005-2012



Data from the NSCISC 2012 Spinal Cord injury Facts and Figures at a Glance. (February 2012) National Spinal Cord Injury Statistical Center. <https://www.nscisc.uab.edu>. Accessed Aug 5, 2013

# So What?

- ◎ In the US
  - ◎ 12,000 new cases/yr
- ◎ Annual cost of SCI morbidity
  - ◎ Over \$300,000 the first year
  - ◎ Over \$41,000 annually till death
- ◎ Life span after SCI shortened 10-15 yrs



# Current Practice

- ◎ PHTLS
- ◎ NAEMSP Policy Statement 2013
- ◎ Sample from local level (Sedgwick Cty, KS)

**Board them all**



**No boarding**

# Spinal Immobilization

- ⦿ To facilitate extrication
- ⦿ To facilitate transload
- ⦿ To immobilize for transport



- ⦿ Generalized to all trauma patients
- ⦿ C collar + long board + blocks

**Board them all**



**No boarding**

# Adverse Effects of Spinal Immobilization

- ⊙ Prolonged Scene Time
- ⊙ Pt. Compliance
- ⊙ Nausea/aspiration
- ⊙ Pain/unhappiness
- ⊙ Impact on MD workup
- ⊙ Pressure Ulcers
- ⊙ Impaired ventilation
- ⊙ Increased ICP

# Spinal Motion Restriction

- ◎ New term, new mindset?
- ◎ Does it have to be all or nothing?
- ◎ How will we address initial education, recurrent training, and field proficiency?

# Selective Spinal Immobilization

The use of clinical criteria by prehospital care providers for clearance of the cervical spine

This is NOT prehospital spine clearance!

# Assessment and Authority

- ◎ How will we provide our medical personnel the tools to assess the spine like this?
- ◎ How will we decide how much authority to delegate and to whom?



# Selective Spinal Immobilization: Clinical Decision Criteria

- ⊙ Concerning mechanism
- ⊙ Spine pain/tenderness
- ⊙ Focal neuro deficit
- ⊙ Unreliable pt. exam
- ⊙ Head injury
- ⊙ Altered sensorium
- ⊙ Distracting injury
- ⊙ Communication barriers
- ⊙ Extremes of age

# Special Considerations

- ⊙ Vacuum/bean-bag + board
- ⊙ Patient movement / transload
- ⊙ Inside the ED
- ⊙ Elderly
- ⊙ Pregnant
- ⊙ Pediatric
- ⊙ Kyphotic
- ⊙ Tactical settings (LE, SWAT, military)

# Review

- ◎ Current Practice
- ◎ Board or no board
- ◎ New term, new mindset
- ◎ Assessment
- ◎ Authority
- ◎ Special Considerations

# Selected References

- 1998, Hauswald et al (Malaysia/New Mexico-SCI does harm?)
- 1998, Brown, et al (EMS & pre-hosp criteria)
- 1998, Orledge and Pepe (commentary on Hauswald study)
- 2001, Kwan, et al (Cochrane Review)
- 2001, Stroh, et al (pro-selective immobilization)
- 2002, Hauswald, et al
- 2005, Domeier, et al (Michigan, 2 county study)
- 2006, Burton, et al (NY state, 1 miss in 32K)
- 2006, Sundheim et al (only 0.16% may have secondary SCI)
- 2011, Ahn, et al (10+ studies for EMT-P clearance, no studies for specific duration or type of immobilization)
- 2013, NAEMSP Position Statement