

STATEWIDE TOLL RULE ADVISORY COMMITTEE (STRAC)

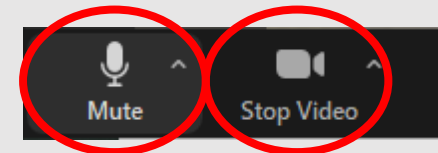
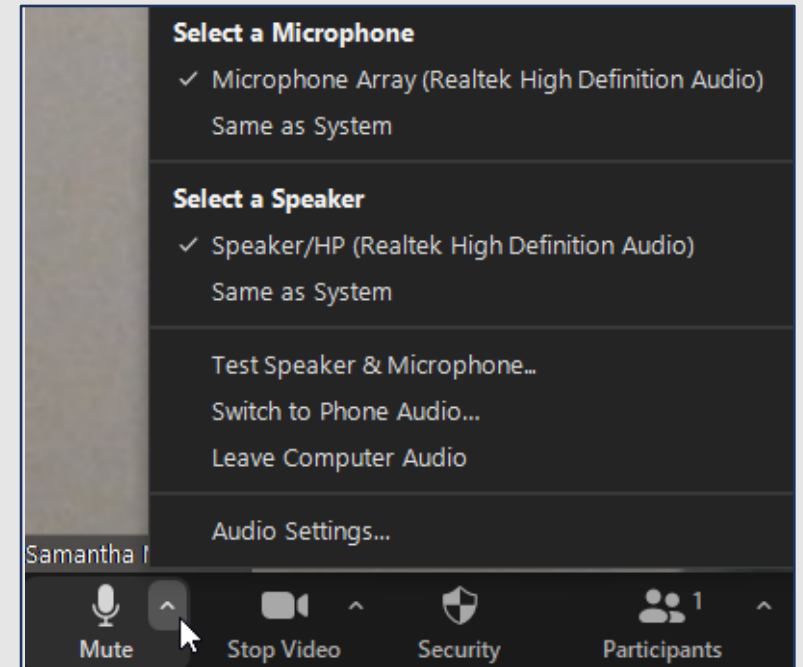
Meeting #1

January 27, 2023

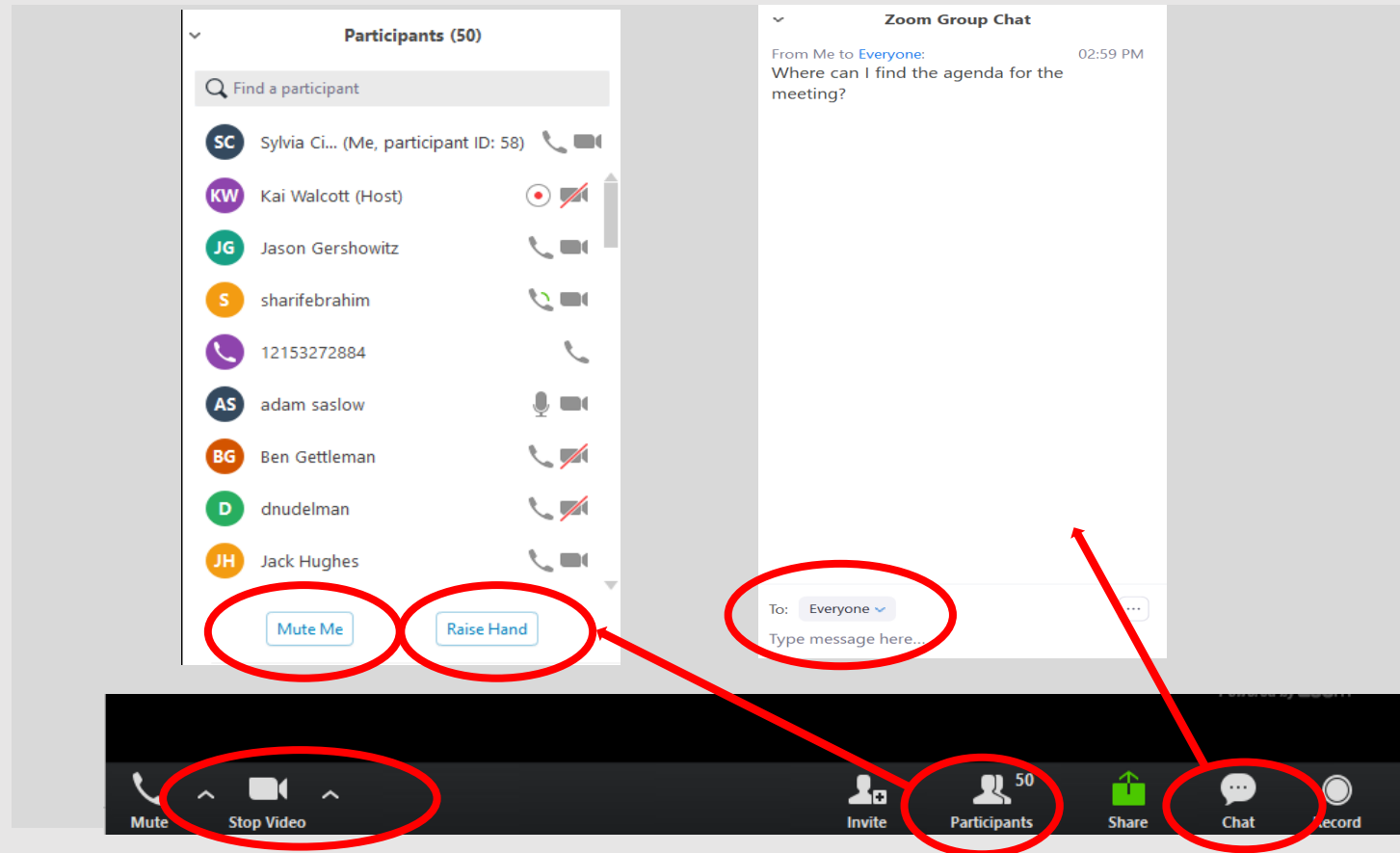
ZOOM MEETING TIPS FOR STRAC MEMBERS

- If you have not already **connected your audio**, click on the arrow next to the microphone icon, then click “Join Computer Audio” or “Switch to Phone Audio” to connect your computer speakers or to view the conference line information.
- Please **keep yourself on mute** when not speaking. To mute and unmute, either select the microphone icon, or use your personal phone.
- **Use video** if possible, to promote face to face communication. Click the video icon to turn on your webinar camera.

If you are experiencing technical difficulties, please send a text to Madeline Kane at (719)209-5138.



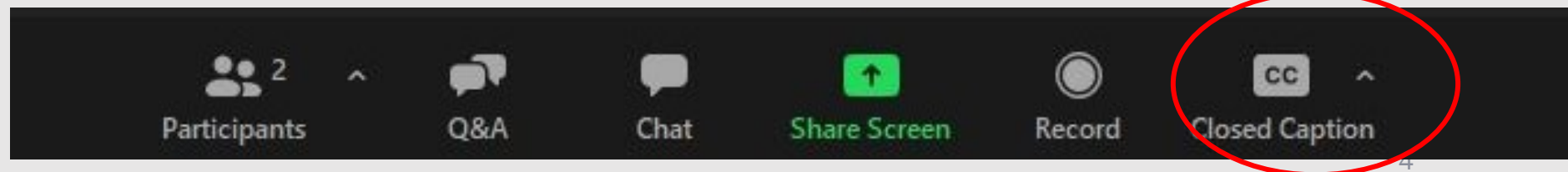
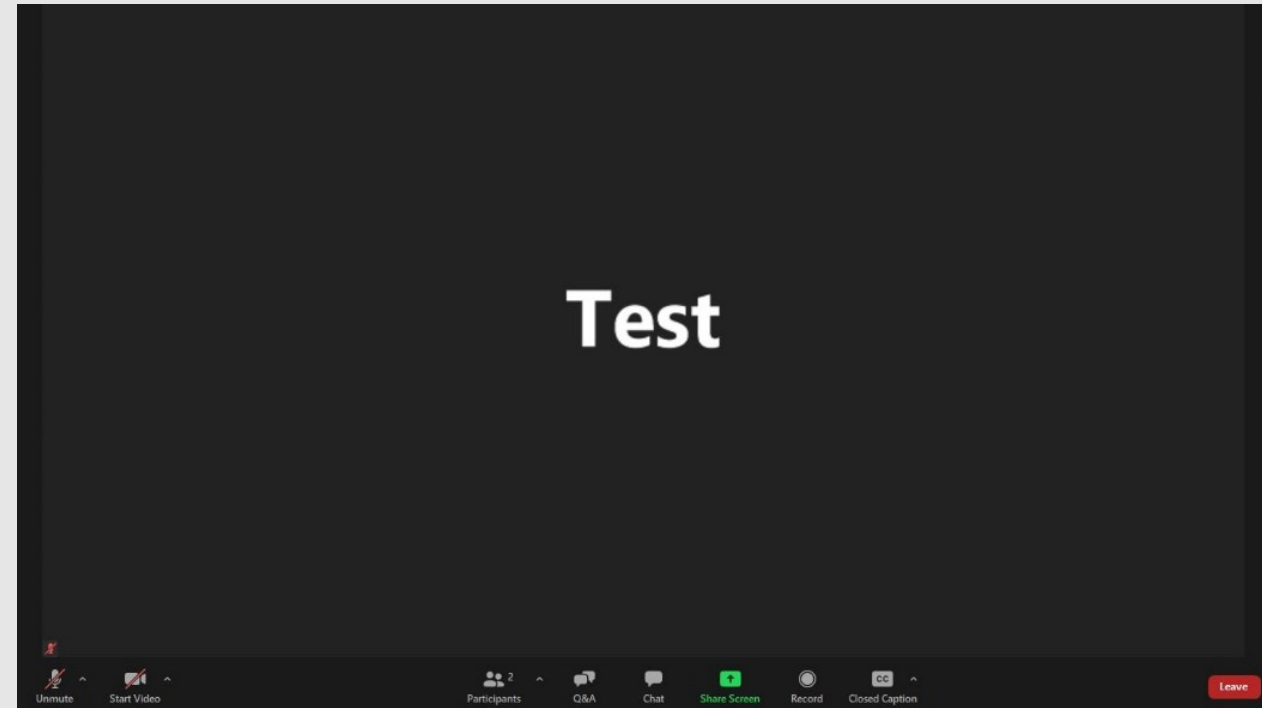
ZOOM MEETING TIPS FOR STRAC MEMBERS



- To raise your hand by phone, press *9.
- To unmute yourself by phone, press *6

HOW TO ACCESS CLOSED CAPTIONS

1. At the bottom middle of your screen, you should see a menu of options. If you can't see the menu, hover your mouse over the bottom middle of the screen.
2. Click on the "CC" icon and a separate window with captions will appear.



HOW TO COMMENT



- For STRAC comments, please email oregontolrules@odot.oregon.gov with "STRAC Public Comment" in the subject line.



- Submit comments via phone: 503-837-3536.



- Comments received by 11:00 AM one business day before each meeting will be shared with advisory committee members before the meeting. All comments will be added to the meeting record.

AGENDA

- **9:00 am: Welcome & Introductions**
- **9:30 am: Diversity, Equity, and Inclusion Training**
- **10:35 am: Toll Program Overview**
- **11:50 am: BREAK**
- **12:05 pm: STRAC Overview**
- **1:05 pm: STRAC Charter**
- **2:35 pm: Q&A**
- **2:45 pm: Wrap Up and Next Steps**

MEETING GUIDELINES



Fully participate in Work Group meetings



Come prepared for meetings



Participate in an open and mutually respectful way



Balance speaking time



Serve as a liaison to your larger community of interest



Act in good faith – Listen and be respectful of others' contributions

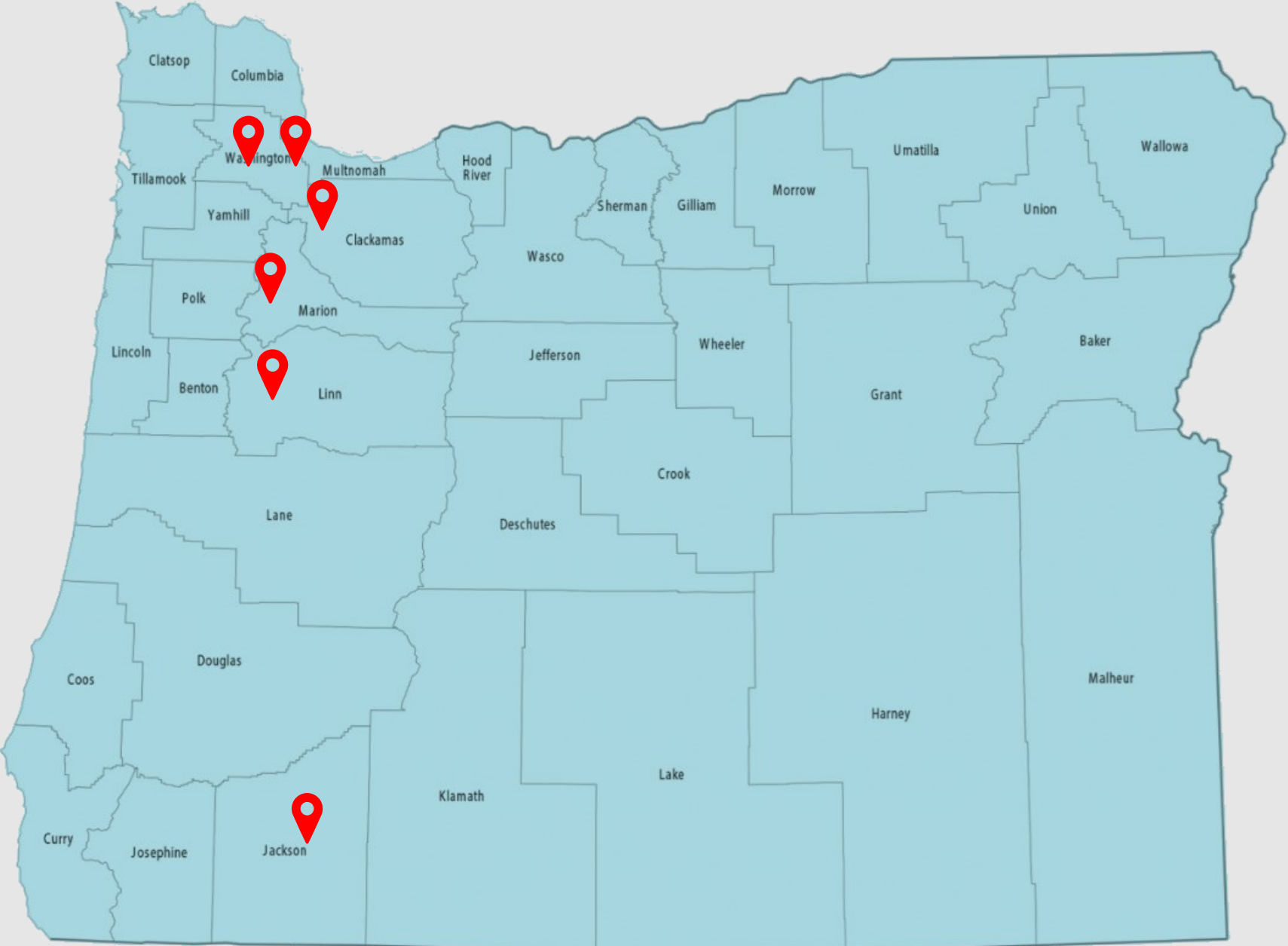
WELCOME



Travis Brouwer

Assistant Director of Revenue, Finance, and Compliance
Oregon Department of Transportation

GEOGRAPHICAL REPRESENTATION



REPRESENTED INTERESTS

- Small and Local Business
- National and Regional Business
- Construction
- Freight and Trucking
- Agriculture
- Emergency Response
- Equity
- Minority and Woman Owned Businesses
- Tourism
- Public Safety
- Commuter



INTRODUCTIONS

- Name
- Role
- Geographic location
- Representing organization or interest
- At the end of this process, I hope that...

DIVERSITY, EQUITY, AND INCLUSION TRAINING



Erika McCalpine

Assistant Director for the Office of Equity and Civil Rights
Oregon Department of Transportation

GUIDING PRINCIPLES

- Be kind and respectful
- Safe space
- To speak, raise your hand and wait to be called on
- Be aware of the space you are occupying
- Participate

LEARNING OUTCOMES

- Understand definitions in glossary
- Understand what diversity is and that it exists among us
- Recognize and understand our privilege
- Understand implicit bias and where our biases come from
- Learn how to mitigate your own biases



FOUNDATIONAL GLOSSARY

Access-The ability, right and permission to approach, enter, speak with, or fully use all aspects of the systems, institutions and the services offered in a society.

Ally-Someone who supports a group other than one's own. An ally acknowledges oppression and actively commits to reducing their own complicity, investing in building their own knowledge and awareness.

Belonging-More than just being seen, it requires having a meaningful voice and the opportunity to participate in the design of social and cultural structures.

Color Blind-The belief that everyone should be treated “equally” without respect to societal, economic, historical, racial or other difference. No differences are seen or acknowledged. Common phrase: “I don't see color.”

Equity-The fair treatment, access, opportunity and advancement for all people, while at the same time striving to identify and eliminate barriers that have prevented full participation of some groups.

Identity- Who you are, the way you think about yourself, and the characteristics that define you. How we are viewed by the world and are assigned identities that may or may not align with how we see ourselves.

Inclusion- The act of creating environments in which any individual or group can be and feel welcomed, respected, supported and valued as a fully participating member.

Oppression- Social power, privilege, and prejudice systems that create multilayered inequities, sustained and reinforced through actions, laws, policies, and processes.

Othering- Dynamics, processes, and structures that produce marginality and lasting inequity across human identities of religion, sex, race, ethnicity, socioeconomic status (class), language spoken, ability, sexual orientation, and skin tone.

Systemic/Institutional/Structural racism- A form of racism that is expressed in social and political systems. It can lead to issues of discrimination in criminal justice, employment, housing, healthcare and political power.

Unlearn/relearn- The process of continually analyzing, evaluating, and challenging knowledge as a process to increase proficiency, innovation, and belonging.

Equality



The assumption is that **everyone benefits from the same supports**. This is equal treatment.

Equity



Everyone gets the supports they need (this is the concept of "affirmative action"), thus producing equity.

Justice



All 3 can see the game without supports or accommodations because **the cause(s) of the inequity was addressed**. The systemic barrier has been removed.

DIMENSIONS OF DIVERSITY

What do we mean by diversity?

- Two main sets of characteristics: surface level demographic characteristics and deeper level characteristics
- **Surface level:** gender, race, ethnicity, age, national origin, religion, disability status, sexual orientation
 - People have different experiences as they go through life as a member of certain groups
- **Deeper level:** personality traits, values, things people are passionate about

DIVERSITY ICEBERG

Waterline of
Visibility



UNDERSTANDING PRIVILEGE

Unearned privilege: An invisible package of unearned assets which one can count on cashing in each day, but about which one is largely oblivious. (McIntosh, 1988)

Earned privilege: A privilege or advantage gained by one's own effort, social position, or concession.

Privilege Statements:

- I can, if I wish, arrange to be in the company of people of my race most of the time.
- I can be pretty sure that my neighbors in a new location will be neutral or pleasant to me the day I move in.
- I can go shopping alone most of the time, pretty well assured that I will not be followed or harassed by store employees or other customers.
- I can go into a supermarket and find the staple foods which fit with my cultural traditions.
- I can easily find a barber or stylist to style my hair where I live.
- I can choose make-up or bandages in “flesh” color and have them more or less match my skin tone.

RECOGNIZING IMPLICIT BIAS

- **What is implicit bias?**
 - It refers to the attributes that we quickly assign to people based on their social categories. We make certain assumptions about what members of the other group are probably like, and that they are different from us.
- **We tend to hold implicit biases that favor our own in-group**
 - Social identity theory-the portion of a person's self-concept is derived from perceived membership in a relevant social group.
 - In-group favoritism-the pattern of favoring members of one's in-group over out-group members.
- **Everyone has biases, even people with commitments to being impartial.**
 - Biases do not make you a bad person
 - Our brains can only process so much of the information that is coming at us
 - Our brains evolve to help us survive by automatically filtering information that seems familiar
 - Our biases impact how we see people and, as a result, how we interact with people

COGNITIVE MORAL DEVELOPMENT

We can change the categories that our minds put people in. It takes time and effort as our stage of moral development influences how we make decisions. Most people reason at the conventional level and are looking outside themselves for guidance.

- **Level 1 (Pre-conventional level)**
 - Obedience and Punishment Orientation
 - Instrumental Purpose and Exchange
- **Level 2 (Conventional)**
 - Interpersonal Accord-Conformity-Mutual Expectations
 - System Maintenance-Upholding duties, laws
- **Level 3 (Post-conventional or Principled)**
 - Social contracts and individual rights



QUESTIONS?





BREAK

5 Minutes

- **STRAC Meeting Attendees:**
Open a browser window on your cell phone or computer. Go to **Menti.com**
- Type in the code in the chat. Click “Submit”



Please enter the code

Submit

The code is found on the screen in front of you

TOLLING OVERVIEW



Travis Brouwer

Introduction to
Oregon Tolling



Maureen Bock

Program
Overview



Erik Havig

Policy
Overview



Garet Prior

Equity
Framework &
Low-Income
Toll Report



Hannah Williams

Toll Program
News &
Engagement

OREGON TOLLING

How did we get here?



2015-2016: Governor led transportation visioning panel



2021: House Bill 3055 passed – allows for financial flexibility to deliver core projects, including pursuing congestion pricing



2017: House Bill 2017 passed – identified core projects and gave direction to study and implement congestion pricing

THE CHALLENGES

Congestion

Crashes

Aging infrastructure

Earthquake risk

Gaps in multimodal transportation

Inequities in access

Effects of changing climate



TOLLING BENEFITS



Improves travel time and reliability



Helps air quality



Funds transportation improvements



Supports transportation equity

PROGRAM OVERVIEW

- Tolling is part of ODOT's long-term strategy to manage congestion and sustainably raise revenue for multimodal investments
- The Oregon Toll Program consists of two toll projects:
 - I-205 Toll Project and the Regional Mobility Pricing Project
 - Tolling on portions of I-205 is scheduled to begin at the end of 2024
 - Tolling on I-5 and I-205 in the Portland metropolitan area is scheduled to begin in 2025



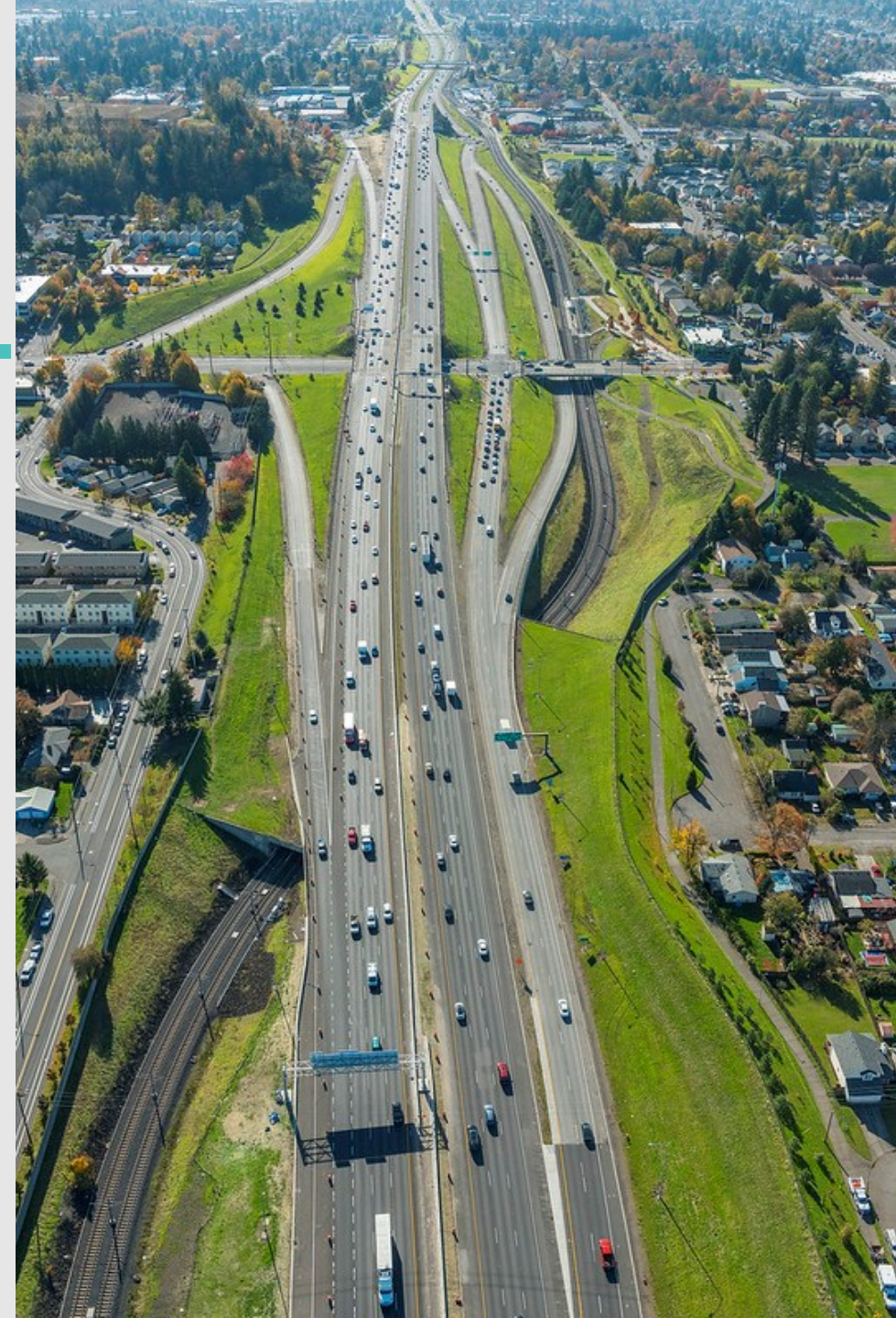
All lanes, all electronic, no stopping



POLICY OVERVIEW

OREGON HIGHWAY PLAN

- Oregon's guiding document for highway and road system
 - Provides vision for system
 - Reflects the Oregon Transportation Plan
 - Guides decision making
- Provides framework
 - Policies & actions
 - Classifications, designations and targets
- Amended since 1999
 - Reflects needs and opportunities
 - Goal 6 Tolling adopted in 2012



AMENDMENT PURPOSE

- Define terms and types of road pricing
- Clarify the need and goals
- Address evolving equity, climate, safety, modernization, and funding goals
- Provide guidance on rate setting and use of revenues





WHAT'S NOT ADDRESSED

- Toll rates and revenue estimates
- Identification of specific investments to be funded through toll projects
- Other types of pricing

POLICY AREAS MOST LIKELY TO INFORM RULEMAKING

- Factors for how we evaluate toll projects
- Toll rate setting and adjustment factors
 - Low-income toll program
 - Exemptions
- Monitoring and review factors

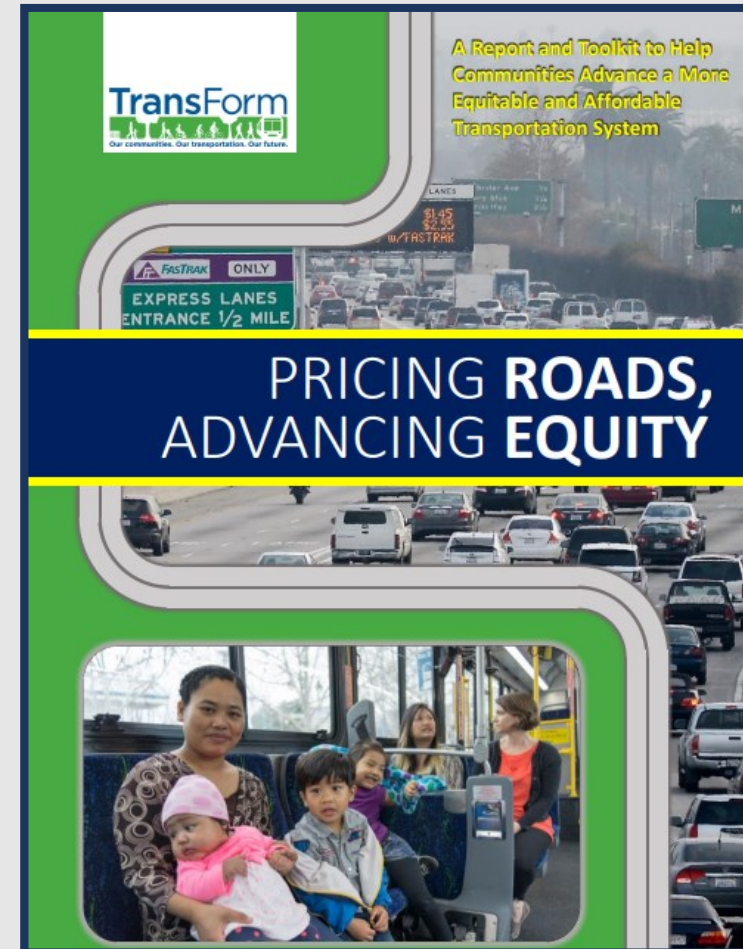


EQUITY MOBILITY ADVISORY COMMITTEE & OREGON TRANSPORTATION COMMISSION



- Neighborhood health and safety
- Low-income
- Transit and multimodal
- Engagement

EQUITY FRAMEWORK



WHO/WHAT IS DEFINING EQUITY

Equity Framework Communities

- People experiencing low-income or economic disadvantage
- Minorities (Race and Ethnicity)
- People experiencing a disability
- Seniors (65+)
- Children (18 years and under)
- People with limited English proficiency
- Households with no vehicle access

Access to Social Resources



Libraries



Schools



Health Care
Facilities



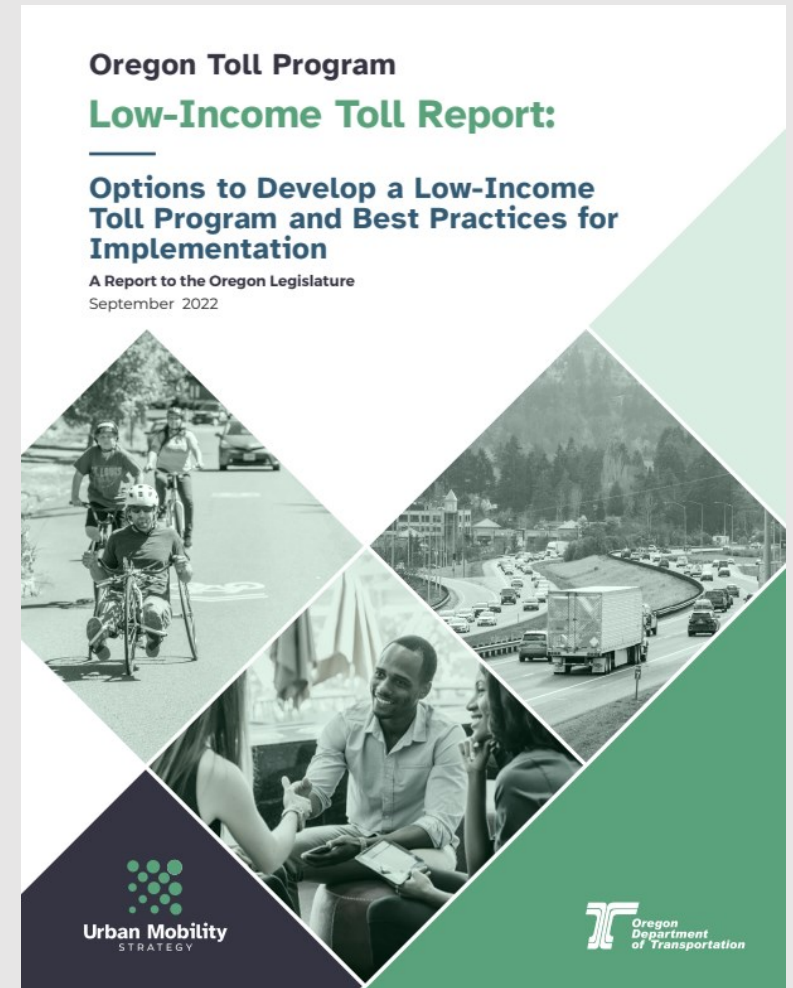
Parks



Religious
Organizations

LOW-INCOME TOLL REPORT

- Provide a significant toll discount for households equal to or below 200% Federal Poverty Level
- Provide a smaller, more focused discount for households above 201% and up to 400% of the Federal Poverty Level
- Use a certification process that leverages existing programs for verification and further explore self-certification



INCOME THRESHOLDS

Household	200% FPL	400% FPL
1	\$27,180	\$54,360
2	\$36,620	\$73,240
3	\$46,060	\$92,120
4	\$55,500	\$111,000
5	\$64,940	\$129,880
6	\$74,380	\$148,760
7	\$83,820	\$167,640
8	\$93,260	\$186,520

2021 Federal Poverty Level (FPL)

Source: U.S. Department of Health and Human Services. 2022. *HHS Poverty Guidelines for 2022*.
<https://aspe.hhs.gov/topics/poverty-economic-mobility/poverty-guidelines>

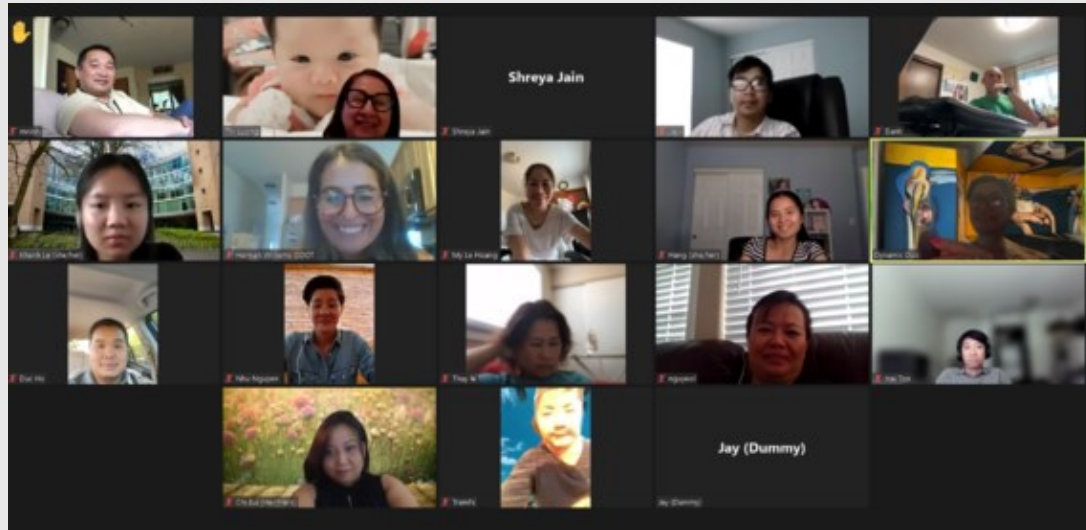
TOLL PROGRAM ENGAGEMENT TACTICS



Oregon City Farmers Market, Summer 2022.

- Briefings, Working Groups, Workshops
- Open Houses, Webinars, Tabling
- Surveys
- Community Based Organization Outreach
- Community Engagement Liaisons
- Newsletters, Emails
- Media Publications
- Social Media

EQUITABLE ENGAGEMENT



Discussion Group, Summer 2021.

- Translation
- Paid participation
- Discussion Groups
- Community-Based Organizations
- Community Engagement Liaisons

COMMUNITY ENGAGEMENT LIAISONS



Q&A

POP QUIZ!

1. How many Oregon counties are represented by STRAC members here today? 0-3, 4-6, or 7+
2. Does ODOT have enough money today to meet all the needs? Yes, No, or Maybe
3. How many languages have we translated tolling engagement materials into? 0-3, 4-6, or 7+
4. Which of the following will the STRAC work on? Toll rate allocation, Space travel, Specific toll project investments, or Tolling customer service rules
5. What does OHP stand for? Oregon Happy People, Oregon Highway Plan, Orange Healthcare Plan, or ODOT Haggles People

- **STRAC Meeting Attendees:**
Open a browser window on your cell phone or computer. Go to **Menti.com**
- Type in the code in the chat. Click “Submit”



Please enter the code

Submit

The code is found on the screen in front of you



BREAK

15 Minutes



**Oregon
Department
of Transportation**

STRAC OVERVIEW



Maureen Bock

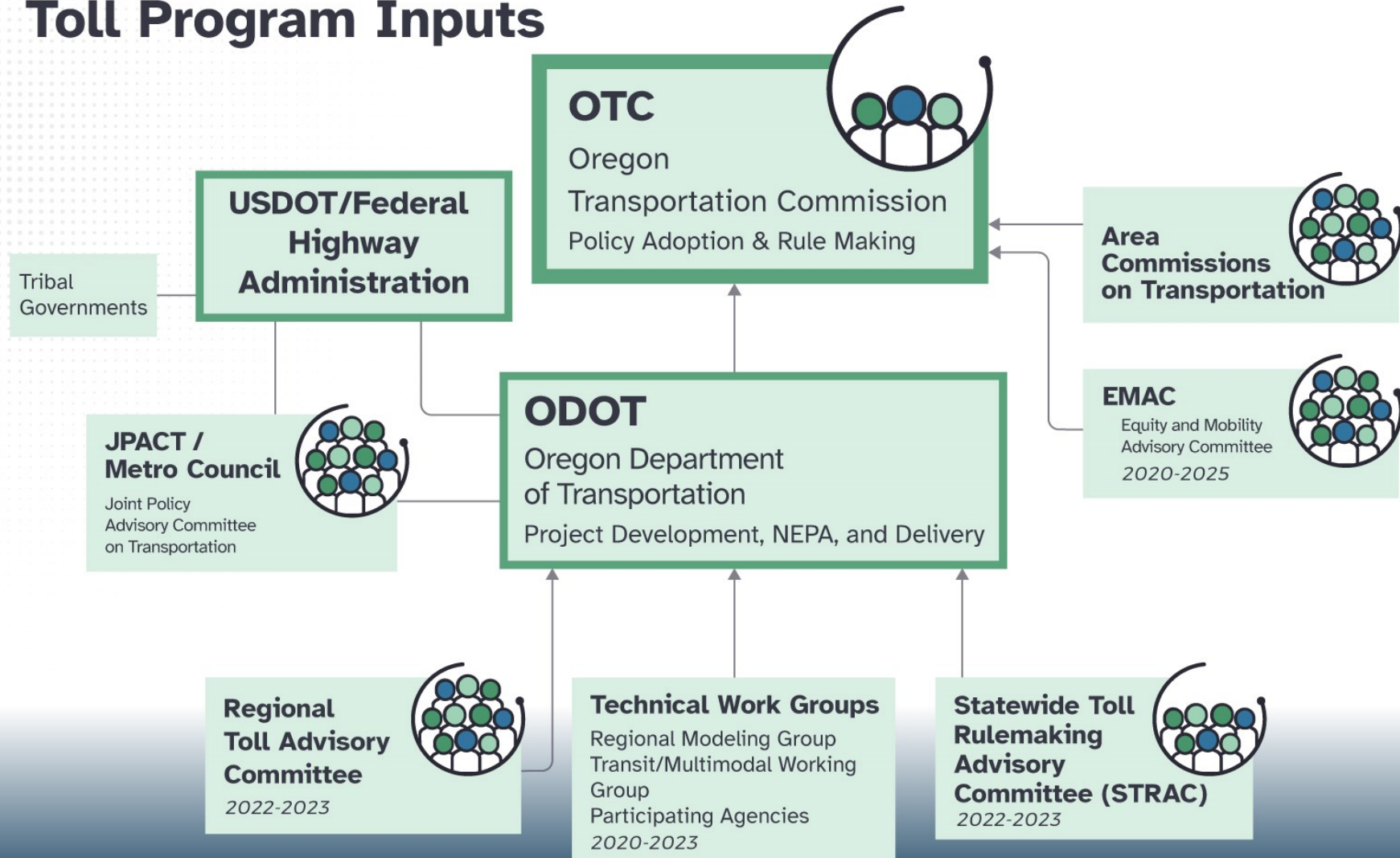
Overview & Timeline



Gareth Prior

Toll Program Roles

Toll Program Inputs



**Broad Public and Stakeholder Engagement & Input
Received by All Committees and Agencies**

STRAC ROLE

- Provide expertise on the changes needed to update rules (OAR 731-040-0010) to inform tolling operations and the toll rate framework
- Rules will govern tolls on planned projects in the Portland metropolitan region and future toll projects that may occur in other parts of the state



STRAC ROLE

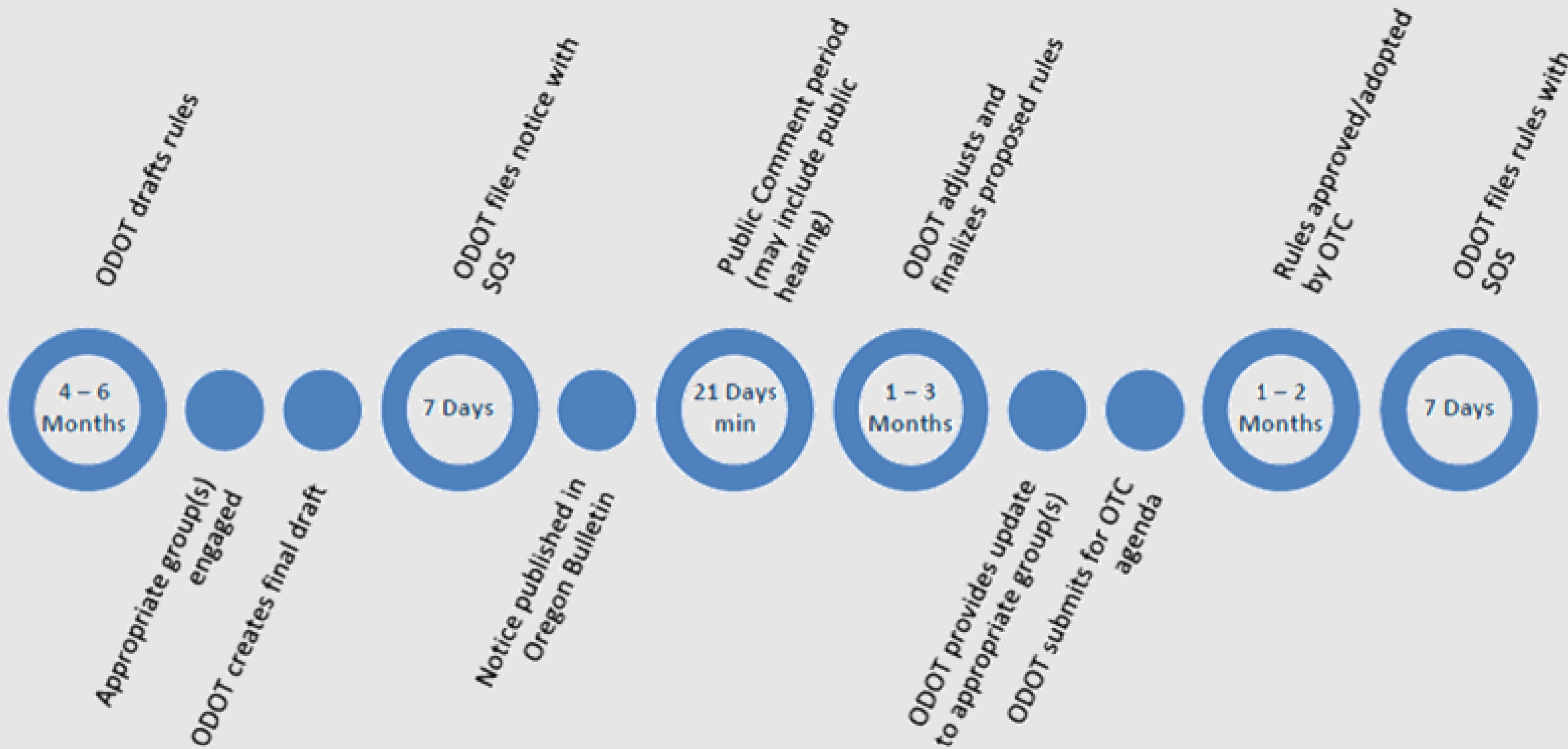
- Tolling operations
 - Customer accounts
 - Payment processing for non-online accounts
 - Toll transactions & due date
 - Civil penalties and administrative fees
 - Dispute provisions
- Toll rate framework
 - Low-income discounts and program
 - Rate schedule framework and adjustment
 - Vehicle rate structure and exemptions

STRAC PROCESS

- The committee is expected to complete their work by fall 2023
- We are planning a phased approach to update the rules:
 - Level 1 – Overview of topic, past decisions, guidance, and tradeoffs. Gather higher-level issues, questions, and comments from the committee.
 - Level 2 – Read and react to draft rules.
 - Level 3 – Review and react to final draft rules



RULEMAKING PROCESS REQUIREMENTS



Q&A

STRAC CHARTER

Oregon Statewide Toll Rulemaking Advisory Committee *Charter*

This Charter lays out the charge, scope, and expectations for the Oregon Statewide Toll Rulemaking Advisory Committee (STRAC) and is intended to create common understanding about how the STRAC members will provide constructive input to Oregon Department of Transportation (ODOT) on behalf of the voices they represent, with an emphasis on social equity.

Background

As Oregon moves forward with its Toll Program, Oregon Administrative Rules for tolling (OAR 731.040) must be updated to implement new transportation policy and operationalize the toll program. This includes statutory requirements from HB 2017 (2017), HB 3055 (2021) and policy direction from the Oregon Transportation Commission (OTC).

The introduction of tolling carries the goals of reducing costs of travel delays, lowering greenhouse gas emissions, and addressing inadequate revenue for infrastructure investments. Tolling also will increase financial costs for those who use the system. The creation of rules for tolling requires balancing the benefits with the burdens of these costs. Tolling is part of a complex financial system that involves other revenue streams, as well as contracts between the State of Oregon and bondholders.

Equity Statement

ODOT embraces diversity and equity, fostering a culture of inclusion as a core value. We recognize the need to engage historically marginalized people and communities in conversations and decisions that affect their lives. The STRAC membership intentionally reflects Oregon's racial, ethnic and ability composition, and a balanced representation of people impacted by the Toll Program. Equity will be prioritized throughout the rulemaking process by applying a social equity lens to issues, in accordance with the [Toll Projects' Equity Framework](#).

Charge and Responsibilities

Purpose and Scope

The purpose of the STRAC is to advise ODOT on the development of rules that modernize and align with legislative changes and add needed clarity about toll operations in an equitable, effective, and credible manner. While there are many aspects to tolling in Oregon, the scope of

Q&A

NEXT STEPS

- Meeting format and regularity
- Coordination with other committees
- Updates to the OTC



THANK YOU