

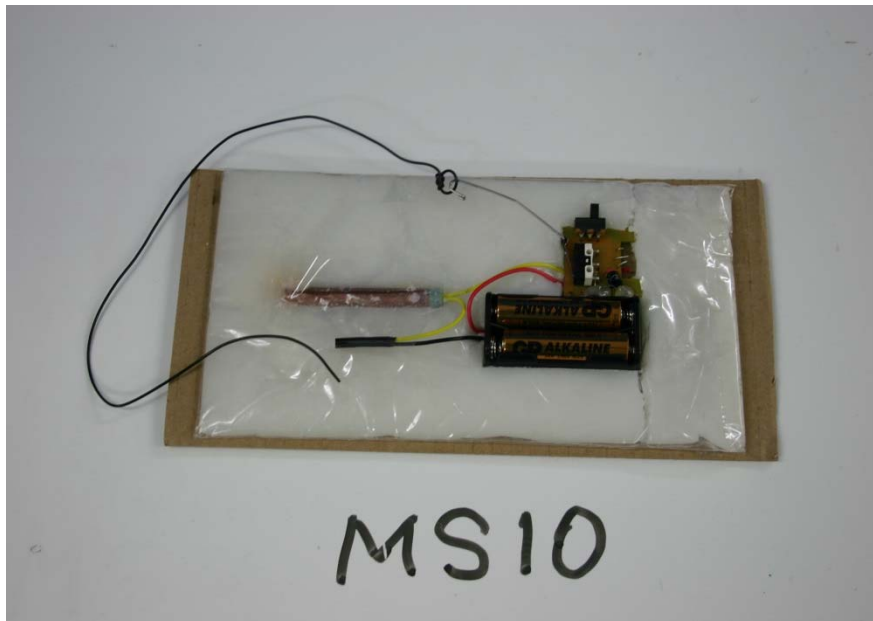


Scanna Postal Screening Equipment

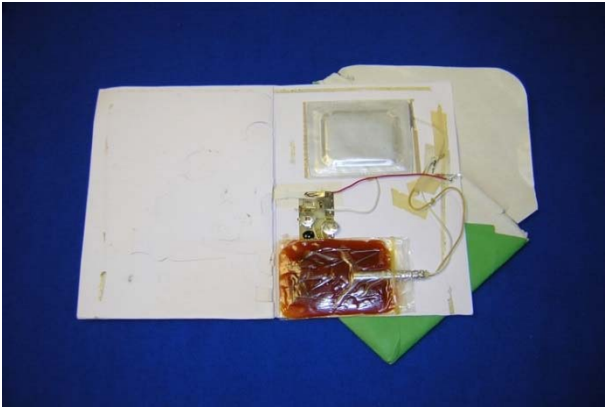
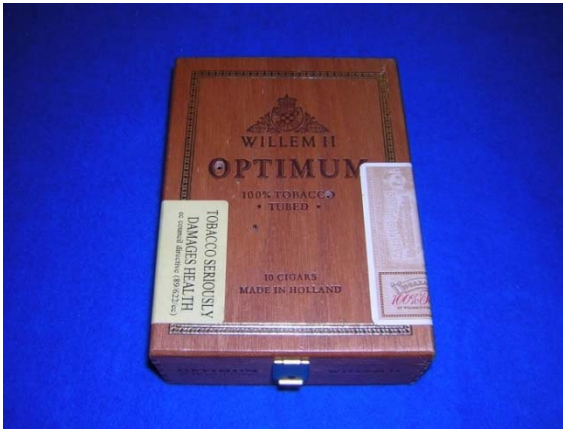


Scanna Postal Screening Equipment

LAURUS Systems understands the risk of receiving hazardous mail and the consequences of not having equipment and procedures to deal with it.



Postal IEDs

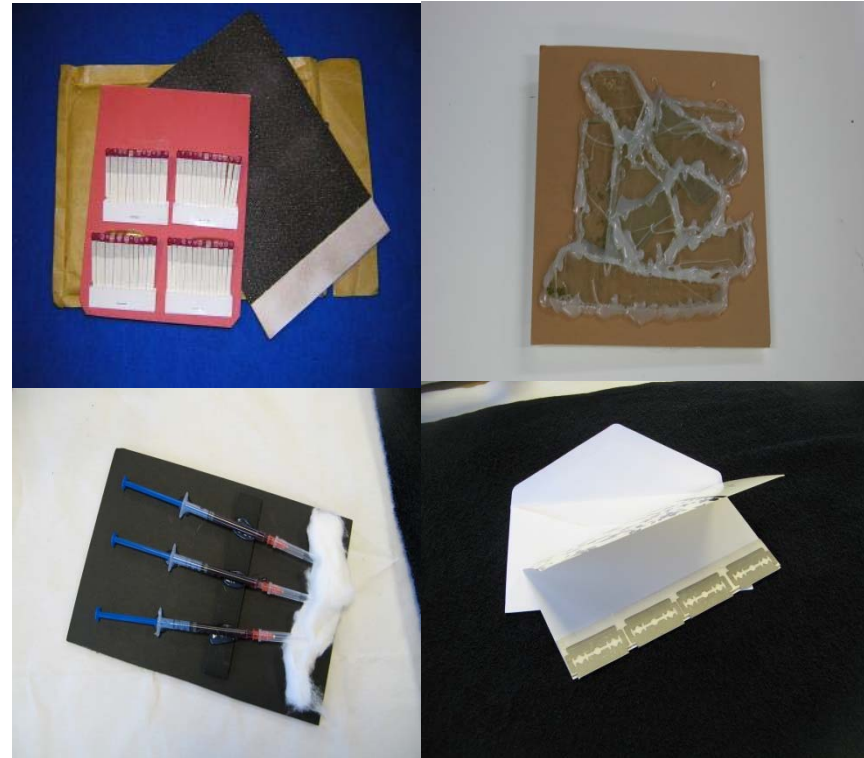


IED Threat concealed in Greetings Card

Postal IED in small box

Non explosive terror

- Razor blades
- Contaminated razor blades
- Hospital waste
- Glass
- Hypodermic needles
- Unpleasant substances
- Dead mice/birds



Postal Security Objectives

Why should your customers use postal screening equipment?

- To get reassurance that their mail is safe to open and no threats are entering their facility through the postal system
- To invest in staff welfare and ensure their safety at work
- As an insurance policy against a terrorist attack. Indeed screening equipment may be an insurance requirement for some businesses.
- To detect Postal IEDs, sharps/powders and narcotics (prisons) - incoming mail and for loss prevention/anti drug trafficking – outgoing mail.

Importance of Finding Threats

How much would a mail attack truly cost you/your client? Consider the cost of

- A hospitalised employee or in the worst case death of the employee
- Having to close the facility and the time to decontaminate the facility
- Recruiting and training new employees
- Having your brand associated with an incident

First Line of Defence against Postal Attacks



Scanmail 10K- electronic mails screening equipment - automatic detection of postal IEDs

Scanmail 10K



- The world's No 1 Desk-top mails creening screening machine/letter bomb detector
- For letters and small packages up to the size of a small phone book
- Automatically detects suspect mail such as razor blades or mail bombs but no false alarms on office metal such as paperclips and staples

'See inside' your Mail with Scanmax



For checking packages and parcels our compact Scanmax X-Ray Postal Scanners

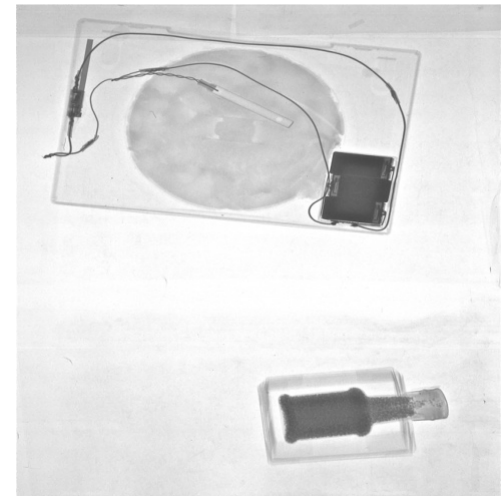
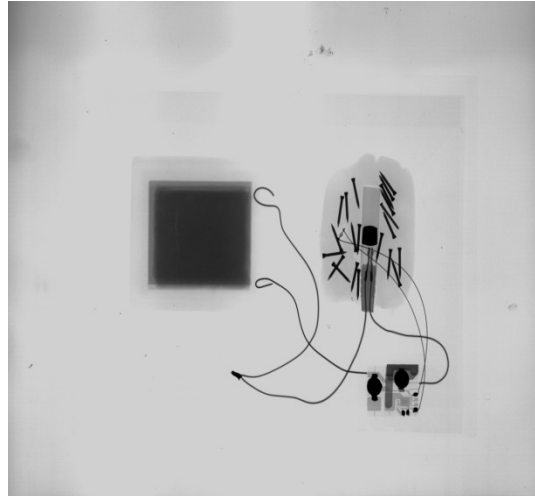
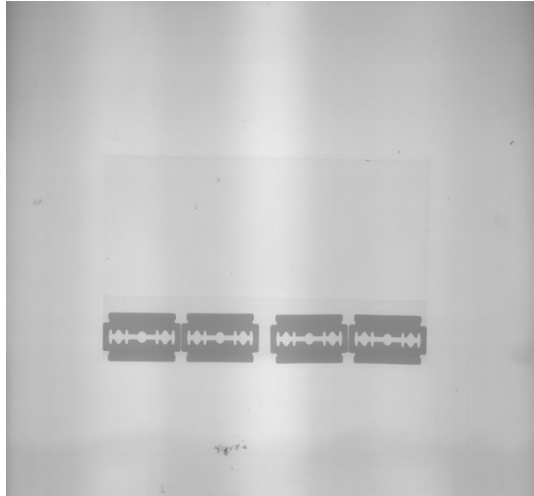


Scanmax 15

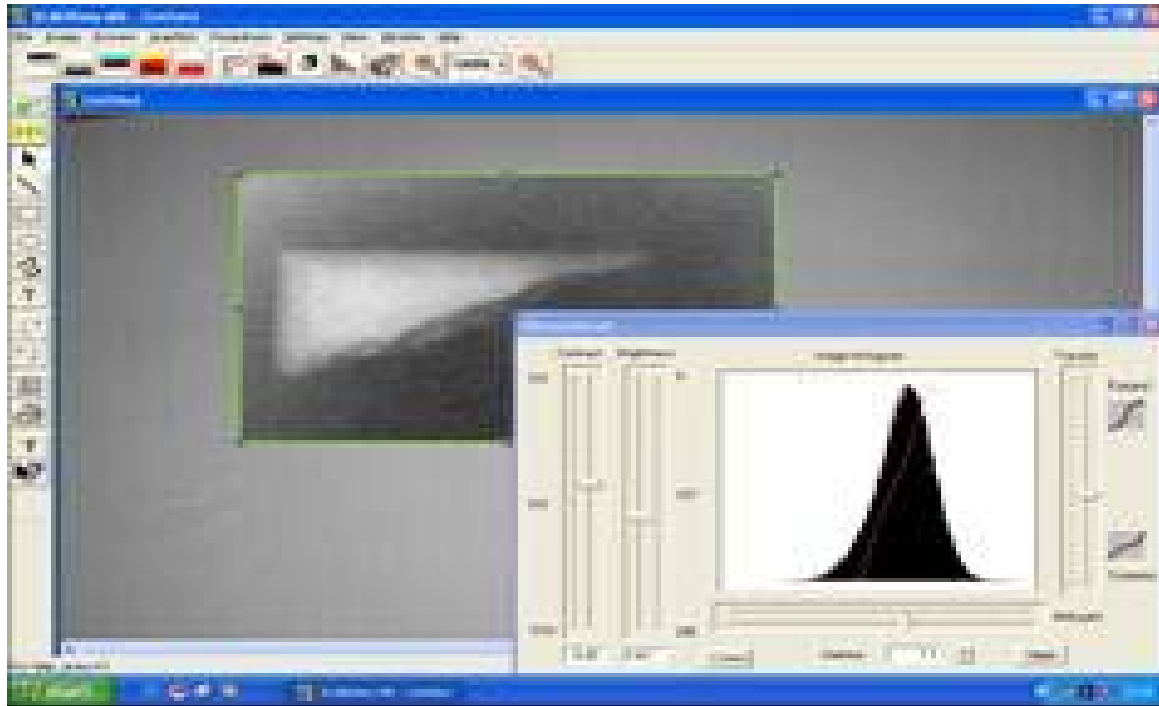
Scanmax 25

Scanmax 225

X-ray machines can find all types of postal threats



X-ray machines can detect white powders in letters before they are opened



Scanmax is a well proven method of x-raying mail

- Scanmax Cabinet X-ray Machines allows your customers to visually inspect their mail either as secondary confirmation after processing with Scanmail or as a stand alone x-ray solution.
- Scanmax X-ray scanning is tried and tested as a highly reliable method of visual mail inspection for government and high risk businesses around the world.
- Safe compact cabinets combined with clear high resolution x-ray images provide your customers with the reassurance that their mail is safe to open.

Scanmax 15 cabinet



- Compact Desk-top unit with wheeled trolley option
- Small footprint
- Screens over 100 letters at a time – low volume users
- For packages up to shoe box size – 12” x 16” (30 x 40 cm)

Scanmax 25 –cabinet



- Compact high resolution x-ray cabinet with large screening chamber
- Similar screening chamber to a conveyor x-ray system - 22" x 16" (56 x 42 cm) screening chamber housed in a very compact cabinet
- Large onscreen images at the simple push of a button
- Screens over 500 letters at a time – Medium volume users

Scanmax 225 cabinet



- High resolution x-ray cabinet with advanced software and image archive/export
- Screens over 500 letters at a time – Medium volume users
- For packages up to archive box size – 22” x 16” (56 x 42) screening area
- Images can be viewed/shared across a network and exported both internally and externally.

Why Scanmail?

- Only need to check letters and small packets and courier deliveries.
- Primary interest in detecting and intercepting possible postal IEDS life threatening – and/or razor blades/cutting devices/sharps.
- Very little space for equipment – Scanmail _ can be stored in a cupboard and brought out for suspect package checks only.
- No security team – Scanmail –can be used by anyone with very little training and no detection skills required – automatic alarm.
- Small budget – low cost of investment and low cost of ownership as negligible regular maintenance or calibration required.

Why Scanmax?

- Want ability to check both mail, packets and parcels or even small briefcases at reception
- Don't have the space, staff or budgetary resource required for a conveyorised x-ray machine
- Prefer to have a visual image of the contents of delivered items
- Want to check for all types of postal threats including letterbombs, razor blades, syringes, white powders, faeces, dead mice etc
- Want the ability to send an x-ray image of any potential threats to a 3rd party – police, security expert etc.
- Want the ability to store evidence of x-rays taken and suspect packages detected.

Postal Screening Equipment Comparison

	Physical size inches and mm	Screening Area/Chamber (mm)	Weight	Comments
Scanmail	18" x 16" x 9" (450(w) x 400(d) x 220(h)mm)	17" x 2.5" x any length (400(w)x 60(h) x any length mm)	19.84 lbs (9 kgs)	Unique product – only discriminating mail screener
Scanmax 15	12" x 20" x 35" (310(w) x 500(d) x 890(h)mm)	12" x 16" x 13.5" (300(w) x 400(d)x 340(h)mm)	251.32 lbs (114kgs)	Compact desktop unit, best image quality in its size and class
Scanmax 25	17" x 24" x 64" (430(w) x 610(d) x 1615(h)mm)	16.5"x 22"x 21" (420(w)x 560(d) x 535(h)mm)	374.78 lbs (170 kgs)	Space Saving, Easiest to use, fastest image production Highest resolution imaging for price
Scanmax 225	17" x 24" x 64" (430(w) x 610(d) x 1615(h)mm)	16.5"x 22"x 21" (420(w)x 560(d) x 535(h)mm)	396.83 lbs (180 kgs)	Image storage, advanced image enhancements (internal pc) and networking

Screening sizes and volumes

Model	Size of screening area	Items per scan	Items screened per hour based on items per scan
Scanmail	16"x2.5"x any length (40cm wide x6cm thick x any length)	>50	Up to 10,000 per hour
Scanmax 25	22" x 16.5" (56 x 42 cm)	>500	Up to 100,000 letters an hour Up to 240 parcels an hour
Scanmax 225	22" x 16.5" (56 x 42 cm)	>500	Up to 100,000 letters an hour Up 240 parcels an hour

Note these are based on operators continuously scanning and rapidly checking the image before viewing next item. Scanned quantities will be reduced according to the speed that the operator loads the mail into the cabinet and how long the operator spends looking at the image before processing the next batch of mail.

To find out more..

Ph (410) 465-5558

Email: Sales@LaurusSystems.com

<http://www.LaurusSystems.com>