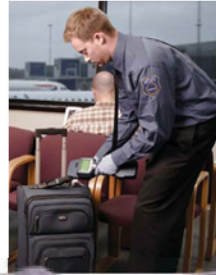


# HARDENED MOBILETRACE® TRACE DETECTION



*detection*

*chemical & explosives*



## THREAT DETECTOR FOR CHALLENGING ENVIRONMENTS

- Detects CWAs, TICs, explosives, precursors, narcotics and taggants
- Designed for challenging environments: extreme temperature, dust, moisture, salt fog, and rain
- Physical shock and vibration resistant
- Tested to MIL-STD-810-G and IP54 rated
- 100% Buy American Act compliant

**HARDENED MOBILETRACE® IS BUILT AROUND A CORE OF FIELD-PROVEN EXPLOSIVES AND NARCOTICS DETECTION TECHNOLOGIES. DESIGNED FOR THE CHALLENGING ENVIRONMENTS IN WHICH YOU WORK. IT HAS BEEN TESTED TO MILITARY AND GOVERNMENT STANDARDS AND HAS EXPANDED CAPABILITIES FOR DETECTING CHEMICAL WARFARE AGENTS (CWAs) AND TOXIC INDUSTRIAL CHEMICALS (TICs).**

*We know your missions are different every time and the environments you encounter are tough and unpredictable. Hardened MobileTrace® can help you enhance the safety and success of your mission by screening for explosives, narcotics and other threats, that might otherwise go undetected.*

Hardened MobileTrace® was designed to make advanced detection technology easy to use in the field. It is a highly portable and lightweight unit equipped with a daylight-readable touch screen for clear and immediate viewing in all lighting conditions. Users who are familiar with other Rapiscan® Systems products will recognize the straightforward software and instructions found common in the user interface across many of Rapiscan® Systems trace detectors..

## DESIGNED FOR CHALLENGING ENVIRONMENTS

Ports and Border.  
Military.  
Law Enforcement.

### RUGGEDIZED

Tested to MIL-STD-810-G.  
IP54 Rated.  
Temperatures range: -20°C to 55°C (-4°F to 131°F).  
Humidity range: 0-95% RH non-condensing.  
Salt fog resistant.  
Drop and vibration tested.

## PORTABLE

Lightweight.  
Two batteries for up to six hours of operation.  
Internal back up batteries for "hot swap" ability.

## EXPANDED SUBSTANCE DETECTION

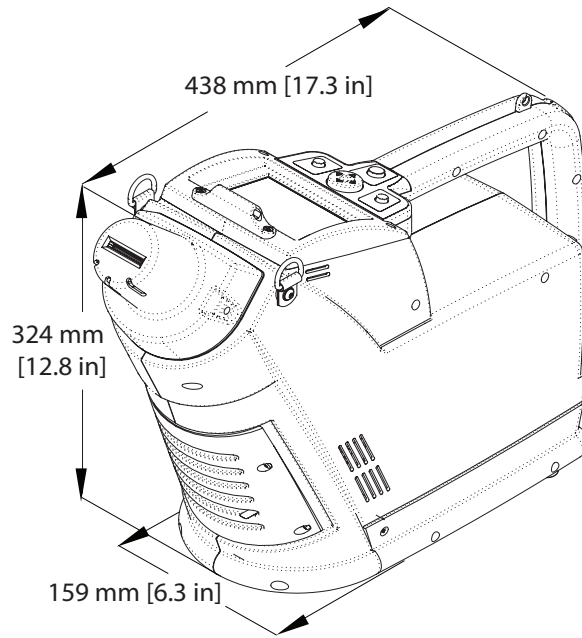
Tested and verified at government and third-party labs.  
CWAs library: blood, blister, nerve.  
TICs library: chlorides, cyanides, acids and ammonias.

## EASY TO USE

Daylight readable touch screen (800 NIT).  
Simple user interface and intuitive menus.  
E-mail, and field service engineer technical support and troubleshooting 24/7.  
Ergonomically designed for PPE operation.

## ACCURATE

False alarm rates <2%.  
Results verified at third-party laboratories..



## PHYSICAL SPECIFICATIONS

Dimensions	Length: 17.3 in. (438 mm) Width: 6.3 in. (159 mm) Height: 12.8 in. (324 mm)
Weight (Approx.)	Net: 9.4 lbs (5.4 Kg) with battery

## TECHNICAL SPECIFICATIONS

Detector Type	Ion Trap Mobility Spectrometer (ITMS™); Nickel 63, 10 millicurie (370 MBq) strength
Analysis Time	Less than 12 seconds
Sample Acquisition	Particle swipe or vapor sampling
Warmup Time (Cold Start)	24 hours/ 30 minutes
Operating Temperature:	-4 to 131°F (-20 to 55°C)
Power	115/230 VAC, 50/60 Hz External AC to DC power supply, DC vehicle power adapter, and main battery
Computer	Windows® CE 5.0, 1 GB compact flash disk
Display	3.5 in. (8.9 cm); color LCD, 800 NIT
Detection Modes:	Explosives, narcotics, TICs, CWAs
Data Transfer Capability	Ethernet and USB connectivity



Rapiscan® Systems is ISO 9001:2008 Certified