

— turning ideas into solutions

**mBRAUN**

**EASYLAB**

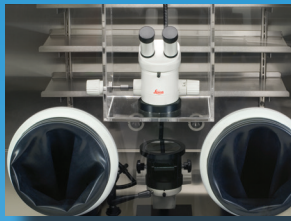
**INERT GAS GLOVEBOX WORKSTATION**

**ECO**

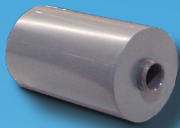


**INERTGAS TECHNOLOGY**

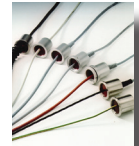
- Best value for money
- Compact design with integrated purifier unit
- Stainless steel enclosure with safety glass window
- Removal of oxygen and moisture, <1 ppm
- Antechamber with sliding tray
- Closed loop recirculation
- Negative and/or positive pressure operation
- Foot pedal switch for temporary pressure adjustment
- ECO Mode operation feature available
- Optional control and safety features available



Microscopes



Internal solvent vapor removal



Feedthroughs



Oxygen, moisture, and solvent sensor

Additional accessories available

## GLOVEBOX TECHNICAL DATA:

Type of construction.....	Welding box
Material.....	Stainless steel (US 304, 1.4301)
Inside lengths.....	1200 mm
Inside depth.....	780 mm
Inside height.....	906 mm
Leak rate.....	< 0.05 Vol%/h
Inside surface.....	Brushed finish Ra 1.2 µm
Outside surface.....	Coated, white (RAL 9003)
Window.....	Glass window
Glove ports.....	POM, 220 mm diameter, O-ring sealed
Gloves.....	Butyl, thickness 0,4 mm
Light.....	Fluorescent lamp
Feedthroughs.....	2 x DN40KF flanges
Electrical feedthrough.....	1
Dust filter.....	HEPA H13 in/out
Shelves.....	3 shelves mounted on the rear panel

*Optional:*

- Large choice of feedthroughs for signals, gas, liquids
- A variety of gloves (Hypalon, Neoprene and Butyl) and thickness sizes are available

## MAIN ANTECHAMBER TECHNICAL DATA:

Type.....	Cylindrical
Material.....	Stainless steel (US 304, 1.4301)
Dimensions.....	250 x 400 mm (D x L)
Inside surface.....	Brushed finish
Outside surface.....	Coated, white (RAL 9003)
Leak rate.....	<10-4 mbar l/s
Sliding tray.....	Stainless steel
Dimensions of sliding tray.....	167 x 392 mm (W x L)
Doors.....	Aluminum , anodized, thickness 10 mm
Door lock.....	Door closing mechanism with spindle handle for one hand operation
Pressure gauge.....	Analog display
Vacuum / Refill process.....	Manual operation via hand valves
Valves.....	Hand valves (DN40 vacuum line / DN8 refill line)

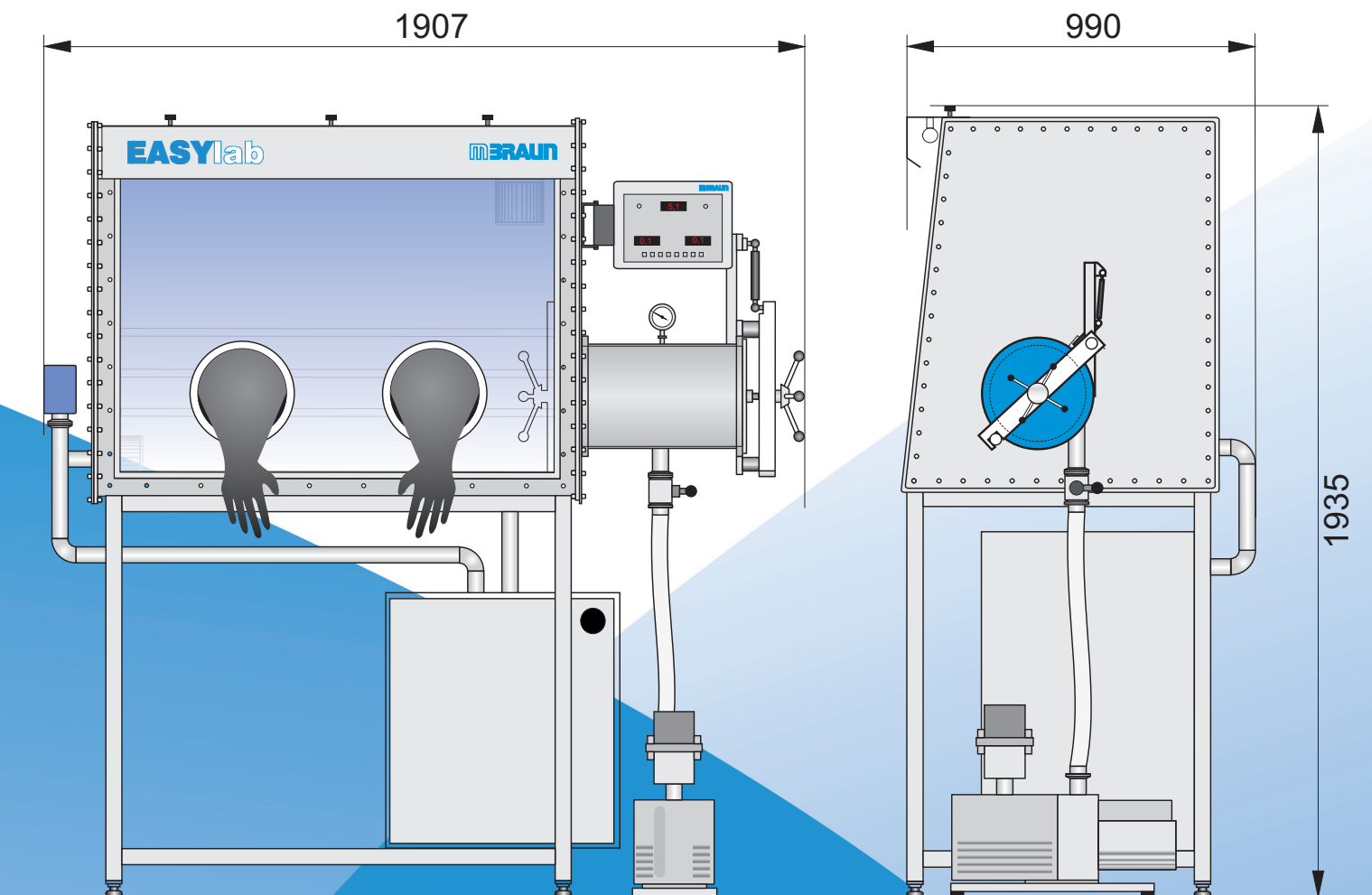


## GAS PURIFIER UNIT TECHNICAL DATA:

Operation principle.....	Closed loop recirculation
Attainable purity level.....	Moisture < 1 ppm, Oxygen < 1 ppm
Recommended enclosure volume.....	Up to 2 m <sup>3</sup>
Number of purification lines per purifier.....	1
Recirculation Control.....	Electro-pneumatic valve
Regeneration.....	included programm with automated sequences
Control unit.....	PLC-M.Braun
Box pressure control.....	Automatic pressure control with foot switch (± 15mbar)
Vacuum pump*.....	up to 10 m <sup>3</sup> /h (5,9 cfm)
Blower (50 Hz / 60 Hz)*.....	up to 22 m <sup>3</sup>
Main and side piping.....	Stainless steel 1.4301 (SUS 304)
Regeneration gas.....	N <sub>2</sub> /H <sub>2</sub> mix. or Ar/H <sub>2</sub> mix. (H <sub>2</sub> 2-10 %)
Working gas.....	Nitrogen, Argon or Helium
Size.....	575x400x517mm (LxWxH)
Optional feature.....	Moisture and oxygen analyzer
Optional feature.....	ECO Mode
Optional feature.....	Solvent vapor removal
Optional feature.....	Dry pump upgrade
Optional feature w/ MBRAUN glovebox.....	Manual Box Purge function

 **ECO** Mode operation

The ECO mode option is designed to reduce noise emission and reduce power consumption up to 90%\*.



### UTILITIES:

	Medium (or type)	Pressure	Flow rate	Connection
Working gas	Nitrogen, Argon or Helium	5-6 bars	200 l/min	Swagelok Ø 10 mm
Regeneration gas	N <sub>2</sub> /H <sub>2</sub> mix. or Ar/H <sub>2</sub> mix. (H <sub>2</sub> 5-10 %)	0.3 - 0.5 bars	15-20 l/min	Swagelok Ø 10 mm
Regeneration gas exhaust	Flexible hose, 9 x 3mm			
Vacuum pump exhaust	Depressurized flexible hose ,diameter not less than 25 mm (to be supplied by customer)			
Electrical power (FLA)	220V/50-60Hz, 10A			

#### M. Braun Inertgas-Systeme GmbH (Headquarters)

Dieselstr. 31 • D-85748 Garching • Germany

Phone: +49 89 32669-0 • Fax: +49 89 32669-105 • E-Mail Sales: info@mbraun.de • E-Mail Service: service@mbraun.de

#### M. Braun Inertgas Systems (Shanghai) Co., LTD

Ground floor of building #1 • No. 145 Jintang Road • Tangzhen, Pudong, Shanghai • 201201 • P.R.China

Phone: + 86 21 5032 02 57 • Fax: + 86 21 5032 02 29 • E-Mail: info@mbraunchina.com